

## Catalog #: 5648

### Aliases

LILRB1; Leukocyte Immunoglobulin Like Receptor B1; LIR-1; MIR-7; ILT2; LIR1; CD85j; PIR-B; PIRB; Leukocyte Immunoglobulin-Like Receptor, Subfamily B (With TM And ITIM Domains), Member 1; Leukocyte Immunoglobulin-Like Receptor Subfamily B Member 1; Monocyte/Macrophage Immunoglobulin-Like Receptor 7; CD85 Antigen-Like Family Member J; Myeloid Inhibitory Receptor 7; Leucocyte Ig-Like Receptor B1; ILT-2; CD85; MIR7; Immunoglobulin Heavy Chain Variable Region; Leukocyte Immunoglobulin-Like Receptor 1; Immunoglobulin-Like Transcript 2; Ig-Like Transcript 2; CD85j Antigen

### Background

Gene Name: LILRB1

NCBI Gene Entry: [10859](#)

UniProt Entry: [Q8NHL6](#)

### Application Information

Molecular Weight: Predicted, 71 kDa; observed, 110 kDa

Clonality: Rabbit monoclonal antibody

Clone ID: 25GB4690

Species Reactivity: Human

Applications Tested: Western blotting (WB)

### Immunogen

Recombinant protein of human LILRB1

### Isotype

Rabbit IgG

### Storage Buffer

Supplied in PBS (pH 7.4) containing 50% glycerol, and 0.02% sodium azide.

### Storage

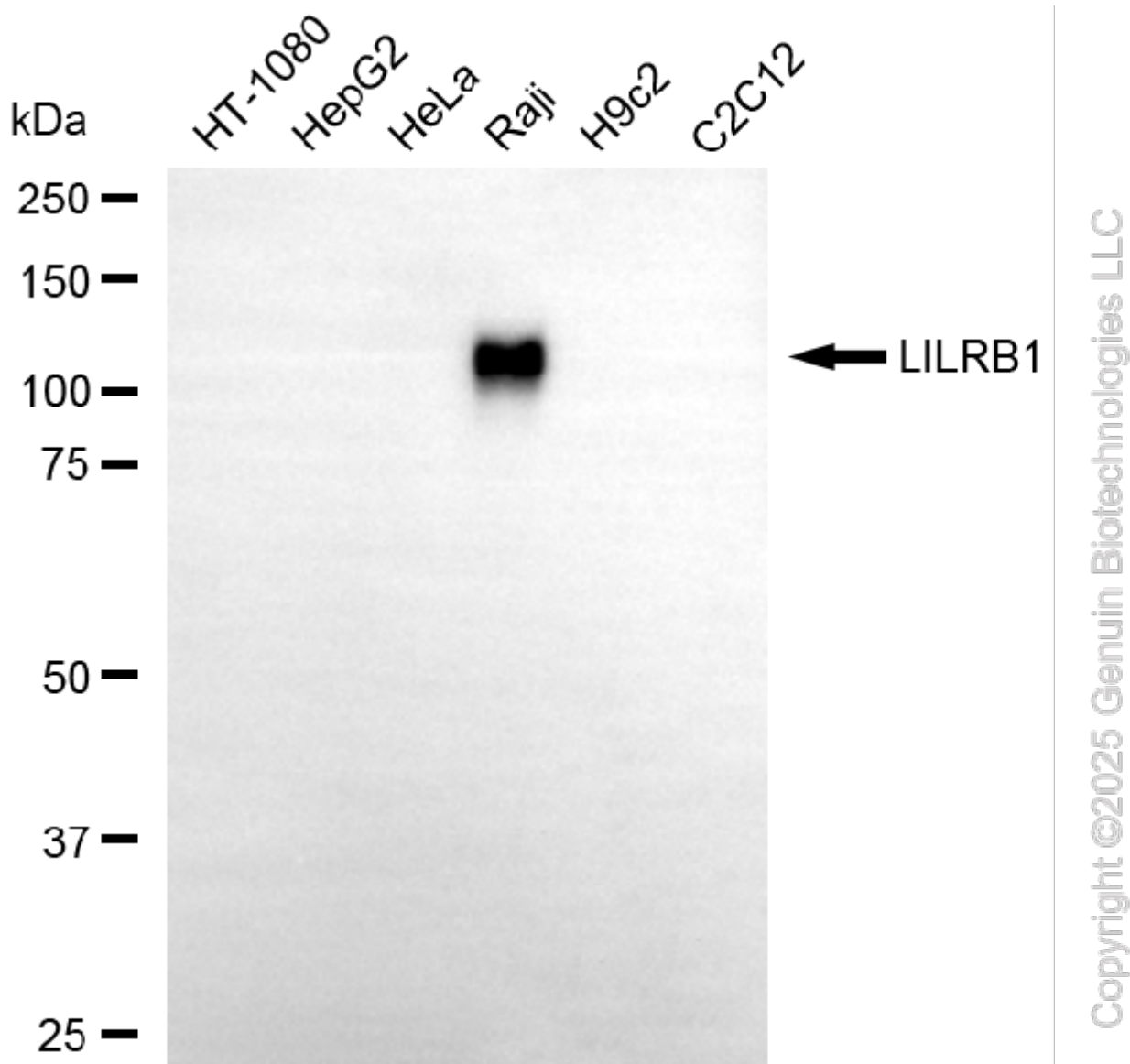
Store at -20 °C for one year.

### Recommended Dilutions

Western Blotting (WB): 1:1,000-1:5,000

**Note:** This product is for research use only.

## Validation Data



Western blotting analysis using anti-LILRB1 antibody (Cat#5648). Total cell lysates (30  $\mu$ g) from various cell lines were loaded and separated by SDS-PAGE. The blot was incubated with anti-LILRB1 antibody (Cat#5648, 1:5,000) and HRP-conjugated goat anti-rabbit secondary antibody (Cat#201, 1:20,000) respectively. Image was developed using FeQ™ ECL Substrate Kit (Cat#226).

### SUPPORT

SUPPORT@GENUINBIOTECH.COM  
TEL: +1-540-855-7041

### ORDERS

SALES@GENUINBIOTECH.COM  
FAX: +1-540-855-7041

[WWW.GENUINBIOTECH.COM](http://WWW.GENUINBIOTECH.COM)