

Catalog #: 5655

Aliases

P2RY13; Purinergic Receptor P2Y13; P2Y13; FKSG77; GPR86; GPR94; Purinergic Receptor P2Y, G-Protein Coupled, 13; G Protein-Coupled Receptor 86; G-Protein Coupled Receptor 94; P2Y Purinoceptor 13; G-Protein Coupled Receptor 86; GPCR1; SP174

Background

Gene Name: P2RY13

NCBI Gene Entry: [53829](#)

UniProt Entry: [Q9BPV8](#)

Application Information

Molecular Weight: Predicted, 41 kDa; observed, 34 kDa

Clonality: Rabbit monoclonal antibody

Clone ID: 25GB4725

Species Reactivity: Human, mouse, rat

Applications Tested: Western blotting (WB)

Immunogen

A synthesized peptide derived from human P2Y13

Isotype

Rabbit IgG

Storage Buffer

Supplied in PBS (pH 7.4) containing 50% glycerol, and 0.02% sodium azide.

Storage

Store at -20 °C for one year.

Recommended Dilutions

Western Blotting (WB): 1:1,000-1:5,000

Note: This product is for research use only.

Validation Data

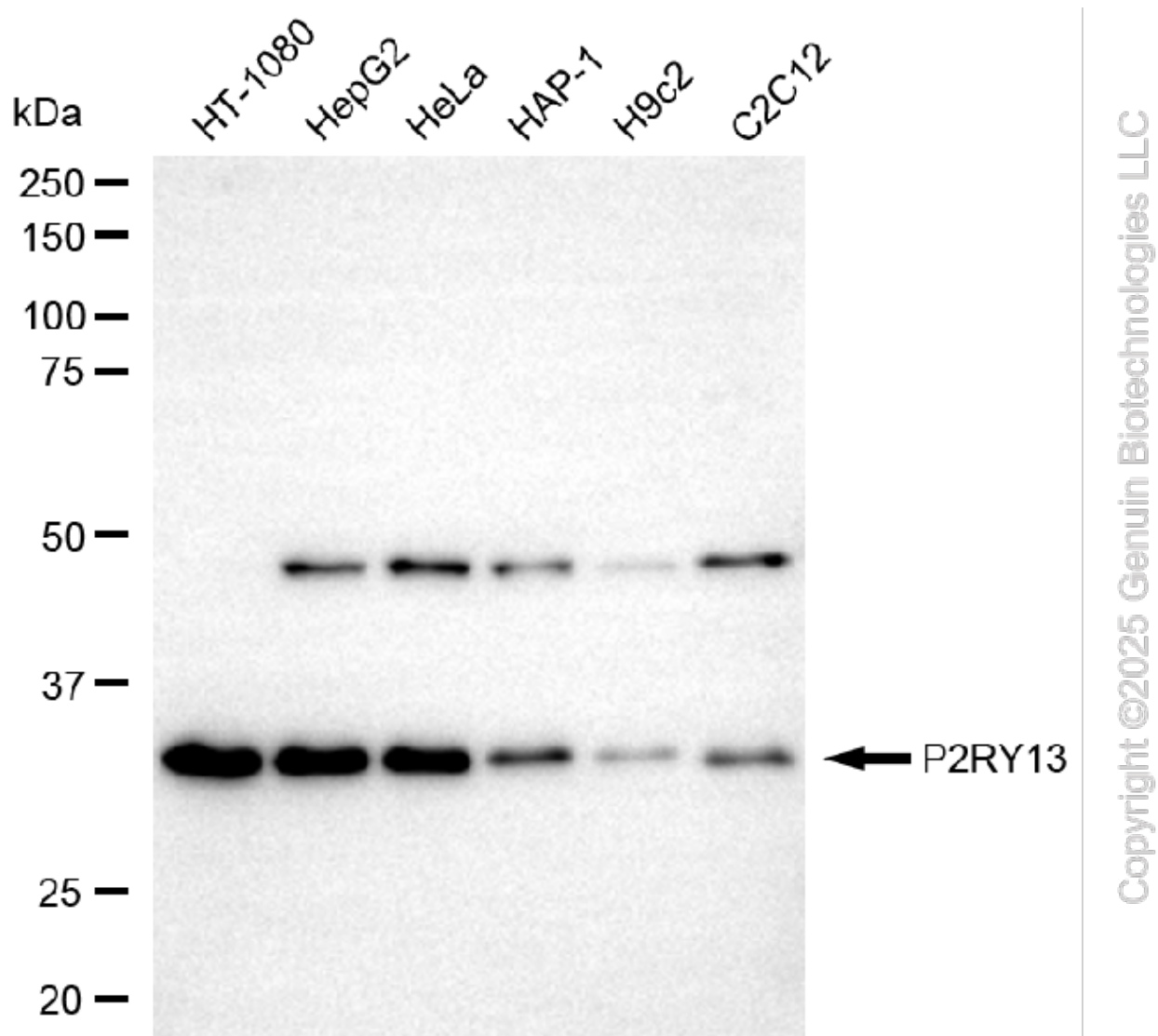
SUPPORT

SUPPORT@GENUINBIOTECH.COM
TEL: +1-540-855-7041

ORDERS

SALES@GENUINBIOTECH.COM
FAX: +1-540-855-7041

WWW.GENUINBIOTECH.COM



Western blotting analysis using anti-P2RY13 antibody (Cat#5655). Total cell lysates (30 μ g) from various cell lines were loaded and separated by SDS-PAGE. The blot was incubated with anti-P2RY13 antibody (Cat#5655, 1:5,000) and HRP-conjugated goat anti-rabbit secondary antibody (Cat#201, 1:20,000) respectively. Image was developed using FeQ™ ECL Substrate Kit (Cat#226).

SUPPORT

SUPPORT@GENUINBIOTECH.COM
TEL: +1-540-855-7041

ORDERS

SALES@GENUINBIOTECH.COM
FAX: +1-540-855-7041

WWW.GENUINBIOTECH.COM