

Anti-Thrombospondin 1 Rabbit Monoclonal Antibody



Catalog #: 5661

Aliases

THBS1; Thrombospondin 1; TSP1; TSP; THBS-1; TSP-1; THBS; Thrombospondin-1p180; Thrombospondin-1; Glycoprotein G; Thrombospondin-P50

Background

Gene Name: THBS1

NCBI Gene Entry: [7057](#)

UniProt Entry: [P07996](#)

Application Information

Molecular Weight: Predicted, 129 kDa; observed, 170 kDa

Clonality: Rabbit monoclonal antibody

Clone ID: 25GB4755

Species Reactivity: Human, mouse, rat

Applications Tested: Western blotting (WB), immunocytochemistry (IC), flow cytometry (FCM)

Immunogen

Recombinant protein of human Thrombospondin 1

Isotype

Rabbit IgG

Storage Buffer

Supplied in PBS (pH 7.4) containing 50% glycerol, and 0.02% sodium azide.

Storage

Store at -20 °C for one year.

Recommended Dilutions

Western Blotting (WB): 1:1,000-1:5,000

Immunocytochemistry (IC): 1:100-1:1,000

Flow Cytometry (FCM): 1:2,000

Note: This product is for research use only.

Validation Data

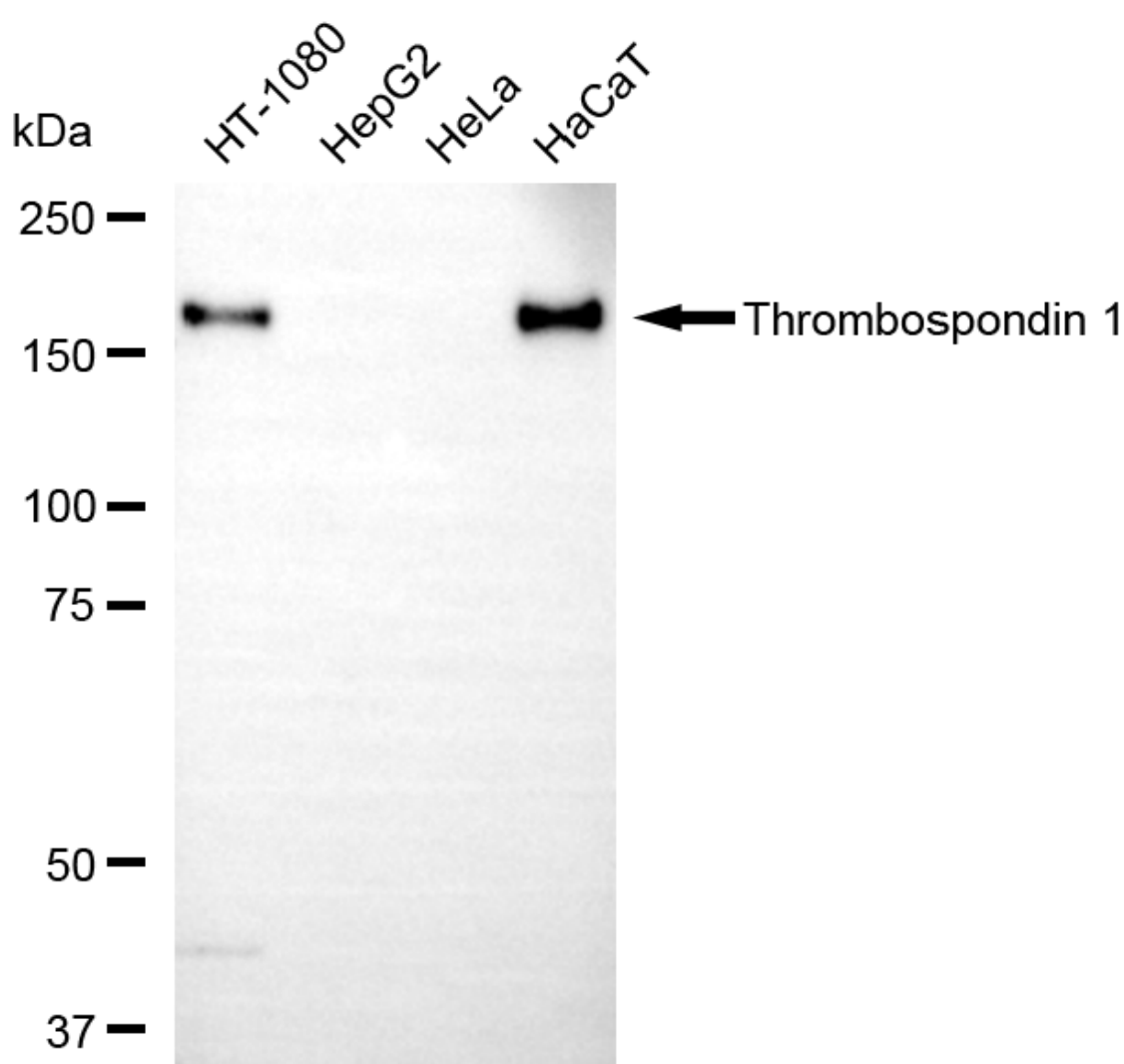
SUPPORT

SUPPORT@GENUINBIOTECH.COM
TEL: +1-540-855-7041

ORDERS

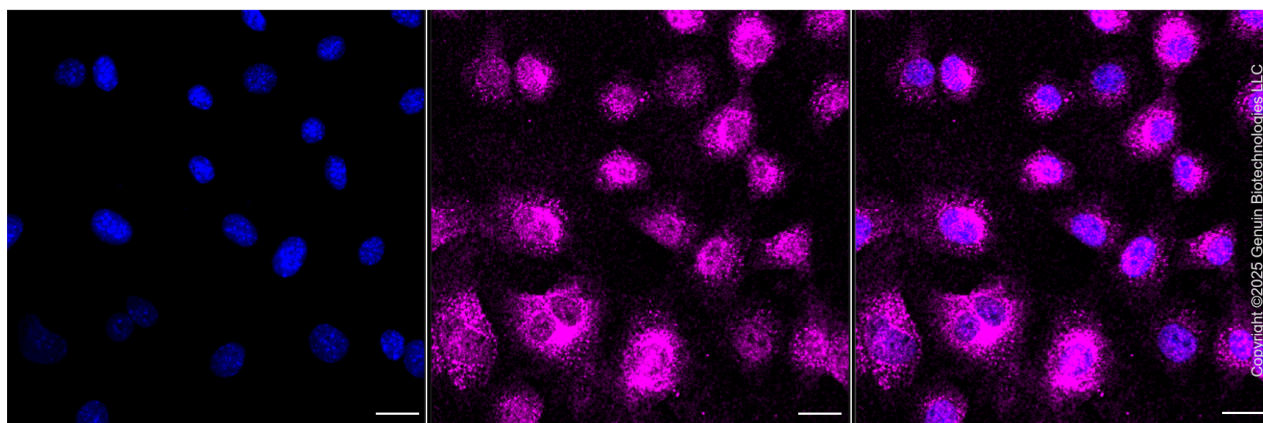
SALES@GENUINBIOTECH.COM
FAX: +1-540-855-7041

WWW.GENUINBIOTECH.COM

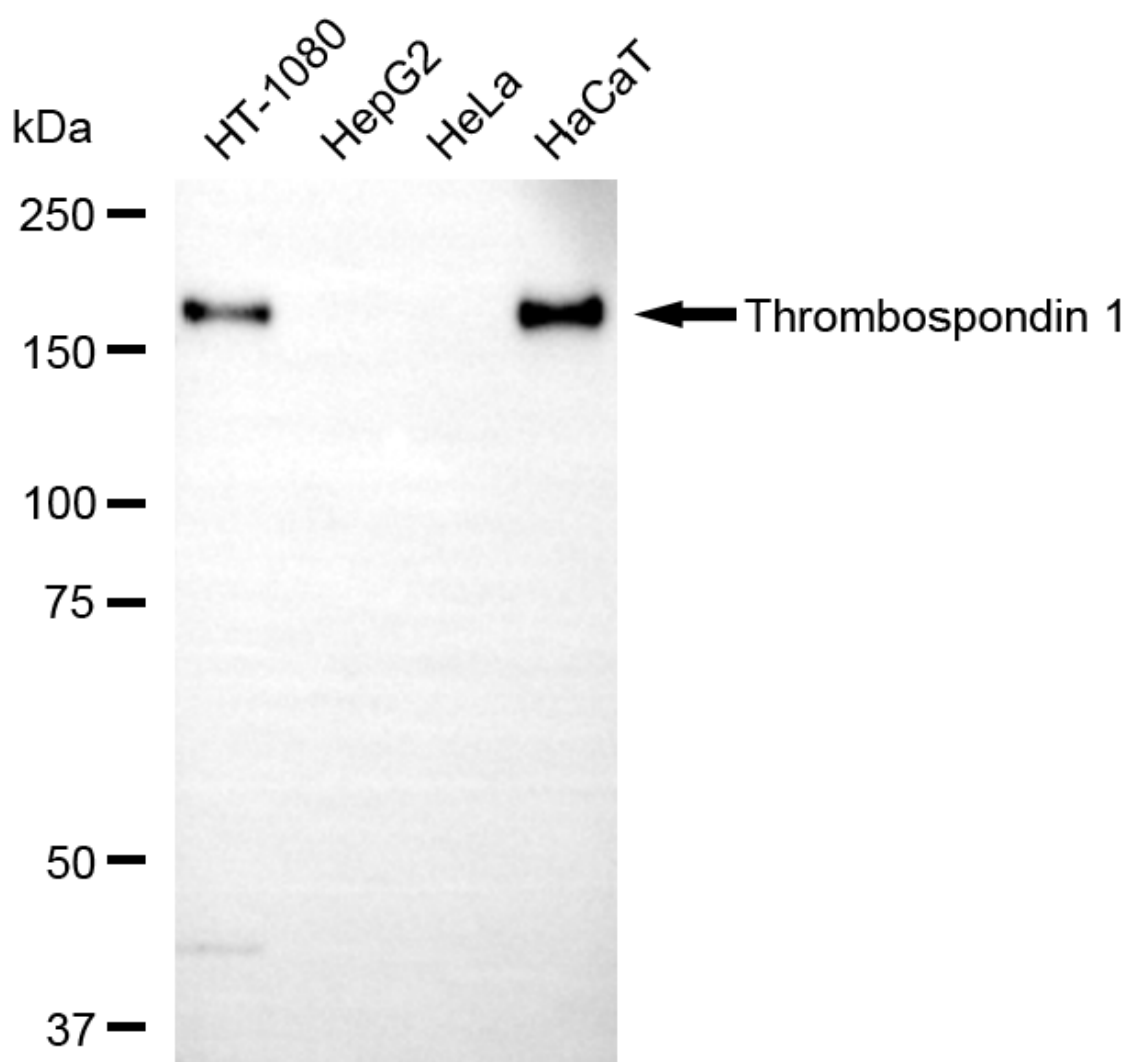


Copyright ©2025 Genuin Biotechnologies LLC

Western blotting analysis using anti-thrombospondin 1 antibody (Cat#5661). Total cell lysates (30 μ g) from various cell lines were loaded and separated by SDS-PAGE. The blot was incubated with anti-thrombospondin 1 antibody (Cat#5661, 1:5,000) and HRP-conjugated goat anti-rabbit secondary antibody (Cat#201, 1:20,000) respectively. Image was developed using NaQ™ ECL Substrate Kit (Cat#716).



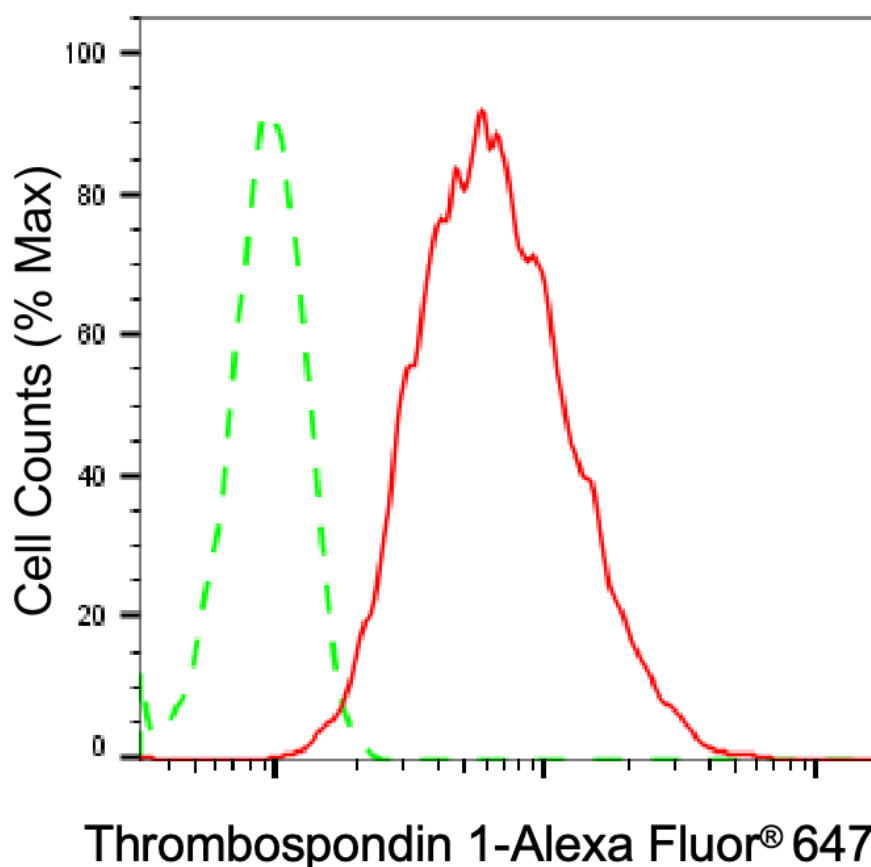
Immunocytochemical staining of C2C12 cells with anti-Thrombospondin 1 antibody (Cat#5661, 1:1,000) . Nuclei were stained blue with DAPI; Thrombospondin 1 was stained magenta with Alexa Fluor® 647. Images were taken using Leica stellaris 5. Protein abundance based on laser Intensity and smart gain: Medium. Scale bar, 20 μ m.



Anti-Thrombospondin 1 Rabbit Monoclonal Antibody

PAGE 4

Western blotting analysis using anti-thrombospondin 1 antibody (Cat#5661). Total cell lysates (30 µg) from various cell lines were loaded and separated by SDS-PAGE. The blot was incubated with anti-thrombospondin 1 antibody (Cat#5661, 1:5,000) and HRP-conjugated goat anti-rabbit secondary antibody (Cat#201, 1:20,000) respectively. Image was developed using NaQ™ ECL Substrate Kit (Cat#716).



Copyright ©2025 Genuin Biotechnologies LLC

Flow cytometric analysis of Thrombospondin 1 expression in C2C12 cells using anti-Thrombospondin 1 antibody (Cat#5661, 1:2,000). Green, isotype control; red, Thrombospondin 1.

SUPPORT

SUPPORT@GENUINBIOTECH.COM
TEL: +1-540-855-7041

ORDERS

SALES@GENUINBIOTECH.COM
FAX: +1-540-855-7041

WWW.GENUINBIOTECH.COM