

Catalog #: 5662

Aliases

CRTC2; CREB Regulated Transcription Coactivator 2; TORC2; CREB-Regulated Transcription Coactivator 2; TORC-2; Transducer Of Regulated CAMP Response Element-Binding Protein (CREB) 2; Transducer Of Regulated CAMP Response Element-Binding Protein 2; Transducer Of CREB Protein 2

Background

Gene Name: CRTC2

NCBI Gene Entry: [200186](#)

UniProt Entry: [Q53ET0](#)

Application Information

Molecular Weight: Predicted, 73 kDa; observed, 73 kDa

Clonality: Rabbit monoclonal antibody

Clone ID: 25GB4760

Species Reactivity: Human, mouse, rat

Applications Tested: Western blotting (WB), flow cytometry (FCM)

Immunogen

Recombinant protein of human CRTC2

Isotype

Rabbit IgG

Storage Buffer

Supplied in PBS (pH 7.4) containing 50% glycerol, and 0.02% sodium azide.

Storage

Store at -20 °C for one year.

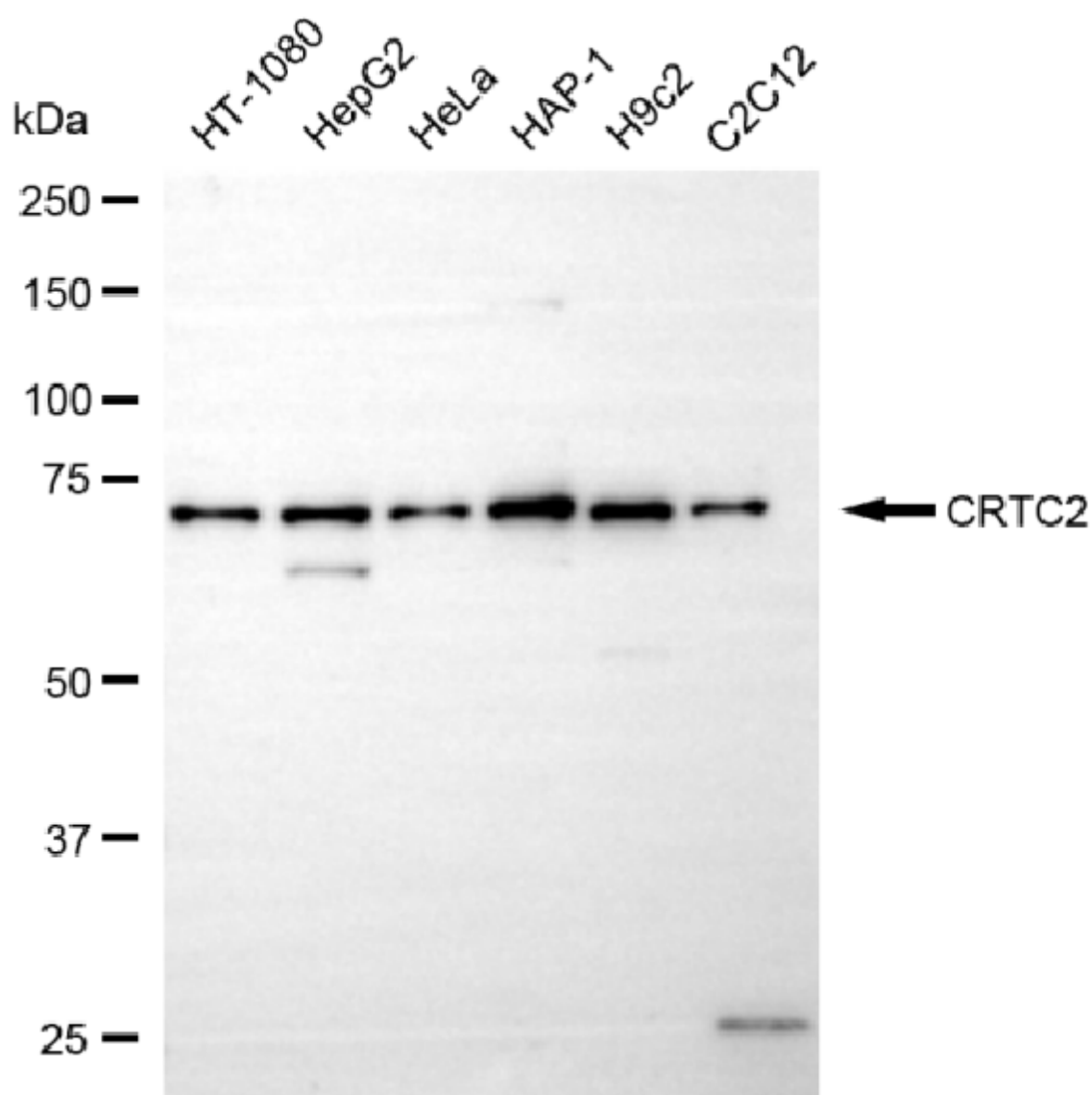
Recommended Dilutions

Western Blotting (WB): 1:1,000-1:5,000

Flow Cytometry (FCM): 1:2,000

Note: This product is for research use only.

Validation Data



Western blotting analysis using anti-CRTC2 antibody (Cat#5662). Total cell lysates (30 μ g) from various cell lines were loaded and separated by SDS-PAGE. The blot was incubated with anti-CRTC2 antibody (Cat#5662, 1:5,000) and HRP-conjugated goat anti-rabbit secondary antibody (Cat#201, 1:20,000) respectively. Image was developed using NaQ™ ECL Substrate Kit (Cat#716).

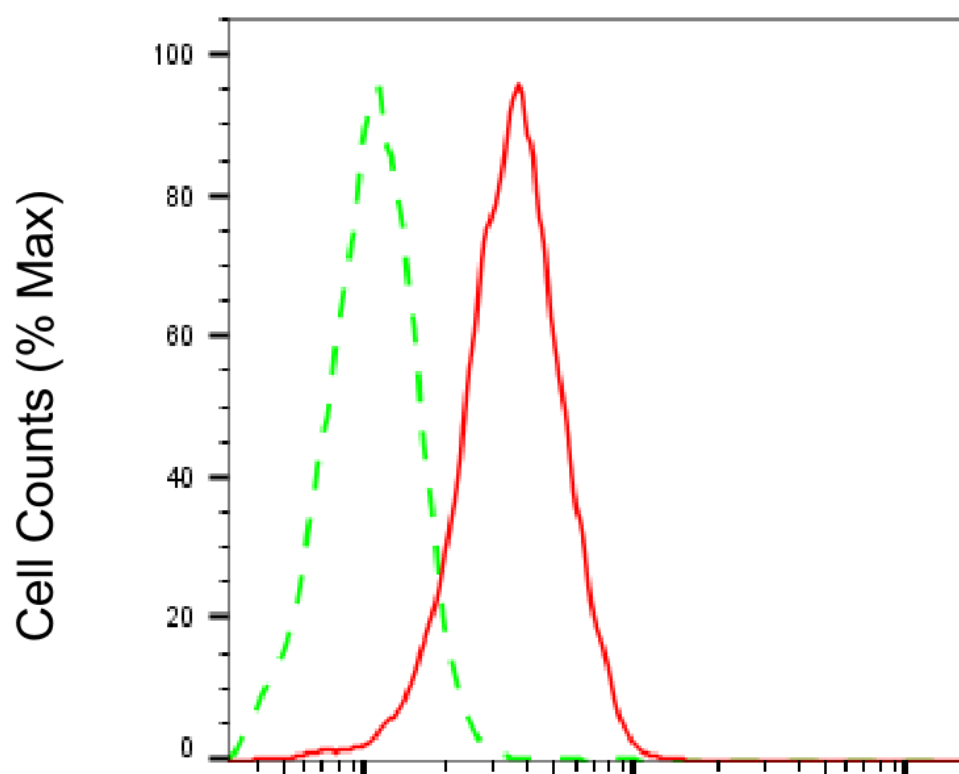
SUPPORT

SUPPORT@GENUINBIOTECH.COM
TEL: +1-540-855-7041

ORDERS

SALES@GENUINBIOTECH.COM
FAX: +1-540-855-7041

WWW.GENUINBIOTECH.COM



Copyright ©2025 Genuin Biotechnologies LLC

CRTC2-Alexa Fluor® 647

Flow cytometric analysis of CRTC2 expression in HAP-1 cells using anti-CRTC2 antibody (Cat#5662, 1:2,000). Green, isotype control; red, CRTC2.

SUPPORT

SUPPORT@GENUINBIOTECH.COM
TEL: +1-540-855-7041

ORDERS

SALES@GENUINBIOTECH.COM
FAX: +1-540-855-7041

WWW.GENUINBIOTECH.COM