

Anti-Interleukin 26 Rabbit Monoclonal Antibody



Catalog #: 5673

Aliases

IL26; Interleukin 26; AK155; IL-26; Interleukin-26; Protein AK155

Background

Gene Name: IL26

NCBI Gene Entry: [55801](#)

UniProt Entry: [Q9NPH9](#)

Application Information

Molecular Weight: Predicted, 20 kDa; observed, 31 kDa

Clonality: Rabbit monoclonal antibody

Clone ID: 25GB4810

Species Reactivity: Human, mouse, rat

Applications Tested: Western blotting (WB)

Immunogen

A synthesized peptide derived from human IL-26

Isotype

Rabbit IgG

Storage Buffer

Supplied in PBS (pH 7.4) containing 50% glycerol, and 0.02% sodium azide.

Storage

Store at -20 °C for one year.

Recommended Dilutions

Western Blotting (WB): 1:1,000-1:5,000

Note: This product is for research use only.

Validation Data

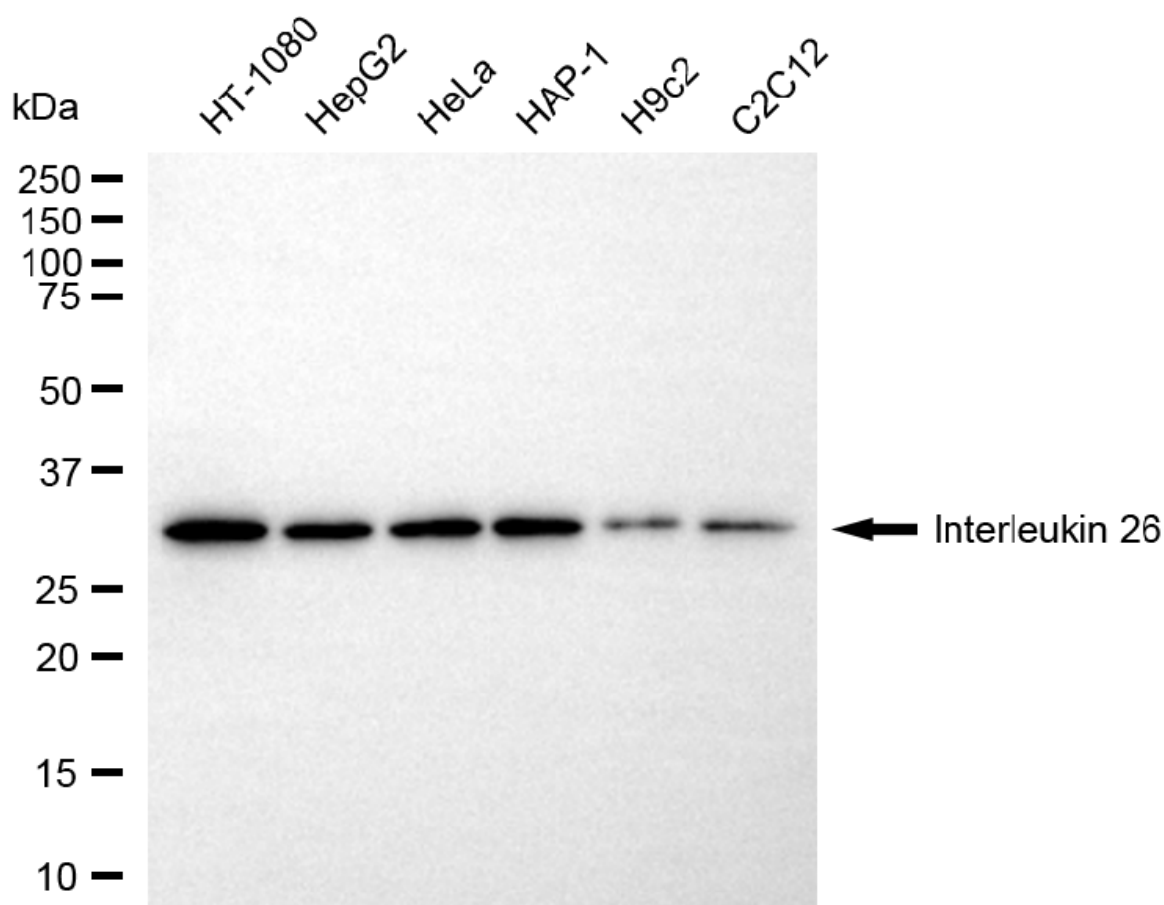
SUPPORT

SUPPORT@GENUINBIOTECH.COM
TEL: +1-540-855-7041

ORDERS

SALES@GENUINBIOTECH.COM
FAX: +1-540-855-7041

WWW.GENUINBIOTECH.COM



Copyright ©2025 Genuin Biotechnologies LLC

Western blotting analysis using anti-interleukin 26 antibody (Cat#5673). Total cell lysates (30 µg) from various cell lines were loaded and separated by SDS-PAGE. The blot was incubated with anti-interleukin 26 antibody (Cat#5673, 1:5,000) and HRP-conjugated goat anti-rabbit secondary antibody (Cat#201, 1:20,000) respectively. Image was developed using NaQ™ ECL Substrate Kit (Cat#716).