

## Catalog #: 5674

## Aliases

LXN; Latexin; Endogenous Carboxypeptidase Inhibitor; Tissue Carboxypeptidase Inhibitor; ECI; TCI; Protein MUM; MUM

## Background

Gene Name: LXN

NCBI Gene Entry: [56925](#)

UniProt Entry: [Q9BS40](#)

## Application Information

Molecular Weight: Predicted, 26 kDa; observed, 26 kDa

Clonality: Mouse monoclonal antibody

Clone ID: 25GB4835

Species Reactivity: Human, mouse, rat

Applications Tested: Western blotting (WB)

## Immunogen

Recombinant protein of human LXN

## Isotype

Mouse IgG1

## Storage Buffer

Supplied in PBS (pH 7.4) containing 50% glycerol, and 0.02% sodium azide.

## Storage

Store at -20 °C for one year.

## Recommended Dilutions

Western Blotting (WB): 1:500-1:2,500

**Note:** This product is for research use only.

## Validation Data

---

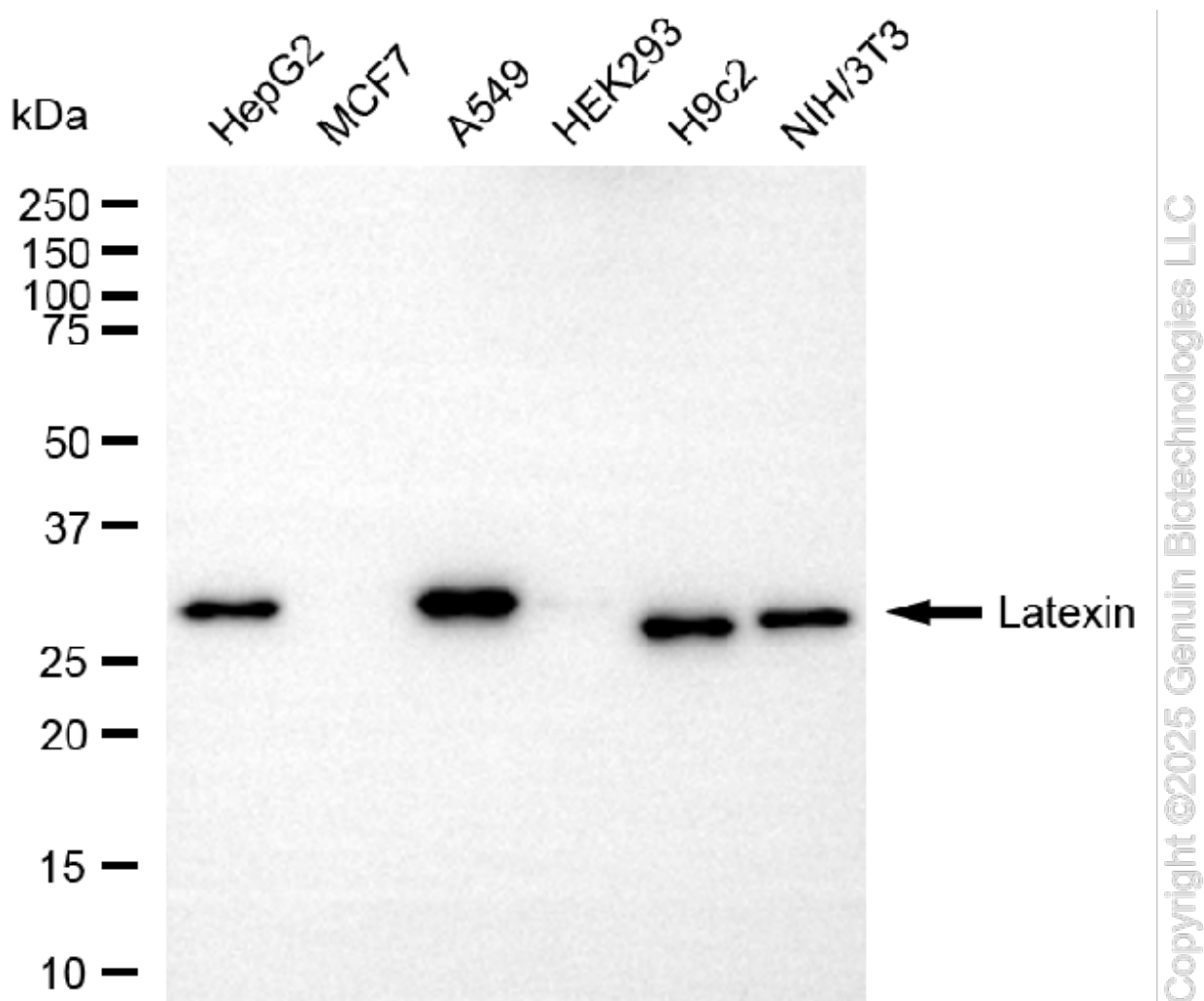
### SUPPORT

SUPPORT@GENUINBIOTECH.COM  
TEL: +1-540-855-7041

### ORDERS

SALES@GENUINBIOTECH.COM  
FAX: +1-540-855-7041

[WWW.GENUINBIOTECH.COM](http://WWW.GENUINBIOTECH.COM)



Western blotting analysis using anti-latexin antibody (Cat#5674). Total cell lysates (30  $\mu$ g) from various cell lines were loaded and separated by SDS-PAGE. The blot was incubated with anti-latexin antibody (Cat#5674, 1:2,500) and HRP-conjugated goat anti-mouse secondary antibody (Cat#101, 1:20,000) respectively. Image was developed using FeQ™ ECL Substrate Kit (Cat#226).

**SUPPORT**

SUPPORT@GENUINBIOTECH.COM  
TEL: +1-540-855-7041

**ORDERS**

SALES@GENUINBIOTECH.COM  
FAX: +1-540-855-7041

[WWW.GENUINBIOTECH.COM](http://WWW.GENUINBIOTECH.COM)