

Catalog #: 5681

Aliases

CRYZL1; Crystallin Zeta Like 1; QOH-1; 4P11; FERRY4; Fy-4; Crystallin, Zeta (Quinone Reductase)-Like 1; Quinone Oxidoreductase-Like Protein 1; Quinone Oxidoreductase Homolog 1; Quinone Reductase-Like 1; Zeta-Crystallin Homolog; Protein 4P11; Ferry Endosomal RAB5 Effector Complex Subunit 4; EC 1.-.-.-

Background

Gene Name: CRYZL1

NCBI Gene Entry: [9946](#)

UniProt Entry: [O95825](#)

Application Information

Molecular Weight: Predicted, 39 kDa; observed, 42 kDa

Clonality: Mouse monoclonal antibody

Clone ID: 25GB4870

Species Reactivity: Human

Applications Tested: Western blotting (WB)

Immunogen

Recombinant protein of human CRYZL1

Isotype

Mouse IgG2b

Storage Buffer

Supplied in PBS (pH 7.4) containing 50% glycerol, and 0.02% sodium azide.

Storage

Store at -20 °C for one year.

Recommended Dilutions

Western Blotting (WB): 1:1,000-1:5,000

Note: This product is for research use only.

Validation Data

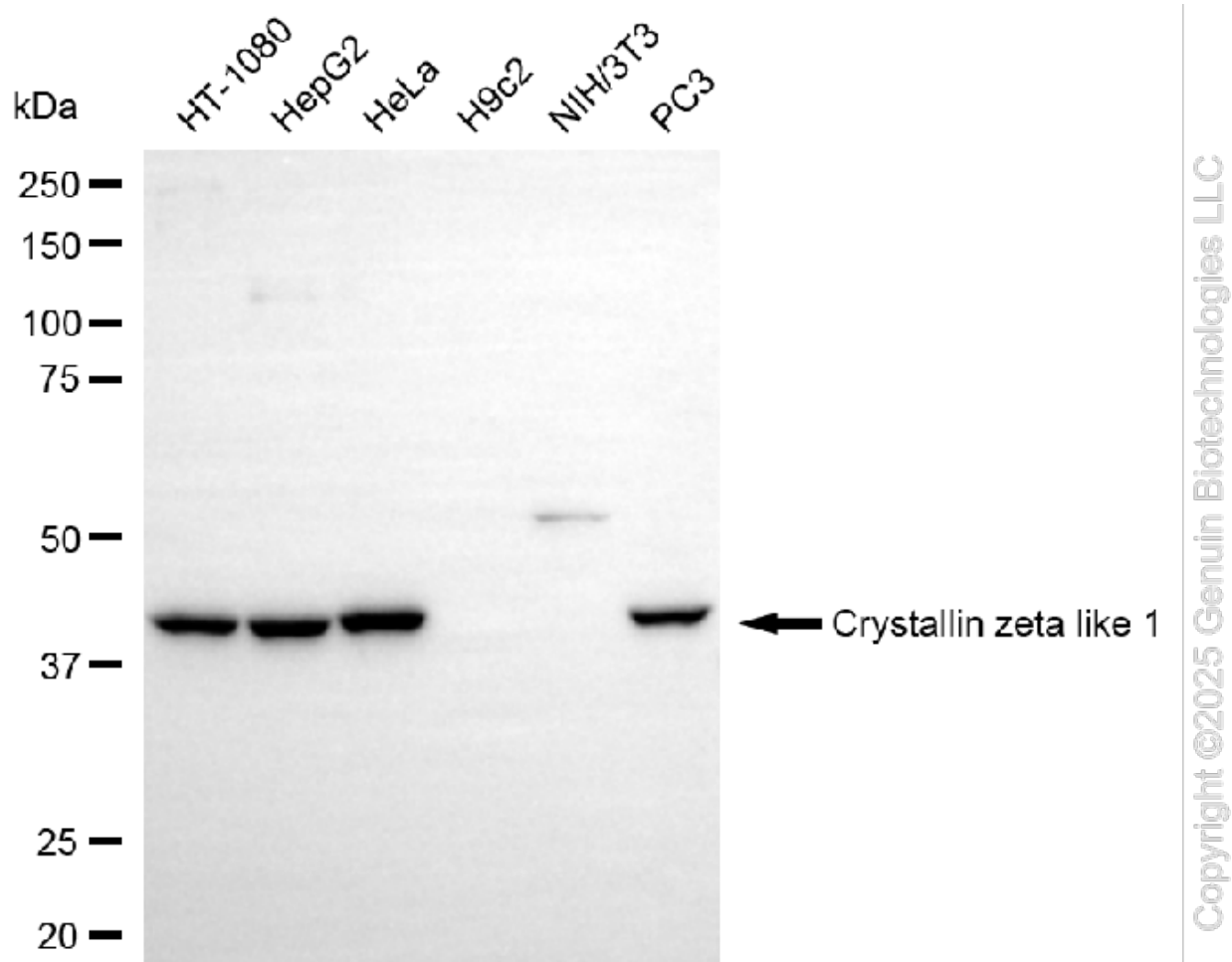
SUPPORT

SUPPORT@GENUINBIOTECH.COM
TEL: +1-540-855-7041

ORDERS

SALES@GENUINBIOTECH.COM
FAX: +1-540-855-7041

WWW.GENUINBIOTECH.COM



Western blotting analysis using anti-crystallin zeta like 1 antibody (Cat#5681). Total cell lysates (30 µg) from various cell lines were loaded and separated by SDS-PAGE. The blot was incubated with anti-crystallin zeta like 1 antibody (Cat#5681, 1:5,000) and HRP-conjugated goat anti-mouse secondary antibody (Cat#101, 1:20,000) respectively. Image was developed using NaQ™ ECL Substrate Kit (Cat#716).

SUPPORT

SUPPORT@GENUINBIOTECH.COM
TEL: +1-540-855-7041

ORDERS

SALES@GENUINBIOTECH.COM
FAX: +1-540-855-7041

WWW.GENUINBIOTECH.COM