

Catalog #: 5688

Aliases

DDOST; Dolichyl-Diphosphooligosaccharide--Protein Glycosyltransferase Non-Catalytic Subunit; OST48; KIAA0115; WBP1; OST; Dolichyl-Diphosphooligosaccharide--Protein Glycosyltransferase 48 KDa Subunit; Advanced Glycation End-Product Receptor 1; Oligosaccharyl Transferase 48 KDa Subunit; Oligosaccharyltransferase Subunit 48; Dolichyl-Diphosphooligosaccharide--Protein Glycosyltransferase Subunit (Non-Catalytic); Dolichyl-Diphosphooligosaccharide-Protein Glycosyltransferase; Dolichyl-Diphosphooligosaccharide-Protein Glycotransferase; Advanced Glycation Endproduct Receptor 1; Oligosaccharyltransferase 48 KDa Subunit; DDOST 48 KDa Subunit; EC 2.4.1.119; OKSWcl45; AGER1; CDG1R; GATD6

Background

Gene Name: DDOST

NCBI Gene Entry: [1650](#)

UniProt Entry: [P39656](#)

Application Information

Molecular Weight: Predicted, 51 kDa; observed, 49 kDa

Clonality: Mouse monoclonal antibody

Clone ID: 25GB4905

Species Reactivity: Human, mouse, rat

Applications Tested: Western blotting (WB)

Immunogen

Recombinant protein of human DDOST

Isotype

Mouse IgG1

Storage Buffer

Supplied in PBS (pH 7.4) containing 50% glycerol, and 0.02% sodium azide.

Storage

Store at -20 °C for one year.

Recommended Dilutions

Western Blotting (WB): 1:100-1:500

SUPPORT

SUPPORT@GENUINBIOTECH.COM
TEL: +1-540-855-7041

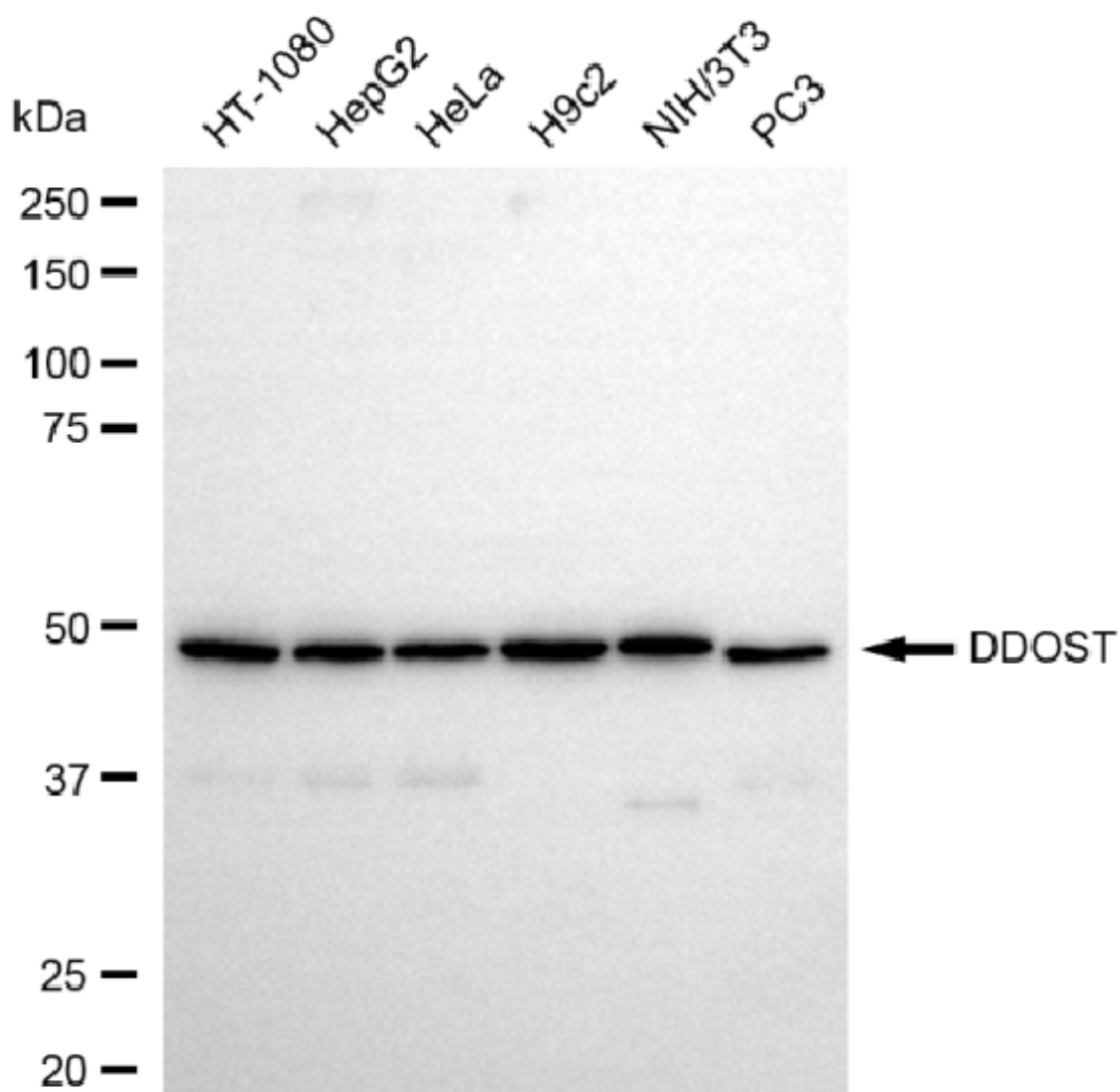
ORDERS

SALES@GENUINBIOTECH.COM
FAX: +1-540-855-7041

WWW.GENUINBIOTECH.COM

Note: This product is for research use only.

Validation Data



Copyright ©2025 Genuin Biotechnologies LLC

Western blotting analysis using anti-DDOST antibody (Cat#5688). Total cell lysates (30 μ g) from various cell lines were loaded and separated by SDS-PAGE. The blot was incubated with anti-DDOST antibody (Cat#5688, 1:500) and HRP-conjugated goat anti-mouse secondary antibody (Cat#101, 1:20,000) respectively. Image was developed using NaQ™ ECL Substrate Kit (Cat#716).

SUPPORT

SUPPORT@GENUINBIOTECH.COM
TEL: +1-540-855-7041

ORDERS

SALES@GENUINBIOTECH.COM
FAX: +1-540-855-7041

WWW.GENUINBIOTECH.COM