

Catalog #: 5689

Aliases

ECT2; Epithelial Cell Transforming 2; ARHGEF31; Epithelial Cell-Transforming Sequence 2
Oncogene; Protein ECT2; Epithelial Cell Transforming Sequence 2 Oncogene

Background

Gene Name: ECT2

NCBI Gene Entry: [1894](#)

UniProt Entry: [Q9H8V3](#)

Application Information

Molecular Weight: Predicted, 104 kDa; observed, 104 kDa

Clonality: Mouse monoclonal antibody

Clone ID: 25GB4910

Species Reactivity: Human

Applications Tested: Western blotting (WB)

Immunogen

Recombinant protein of human ECT2

Isotype

Mouse IgG1

Storage Buffer

Supplied in PBS (pH 7.4) containing 50% glycerol, and 0.02% sodium azide.

Storage

Store at -20 °C for one year.

Recommended Dilutions

Western Blotting (WB): 1:500-1:2,500

Note: This product is for research use only.

Validation Data

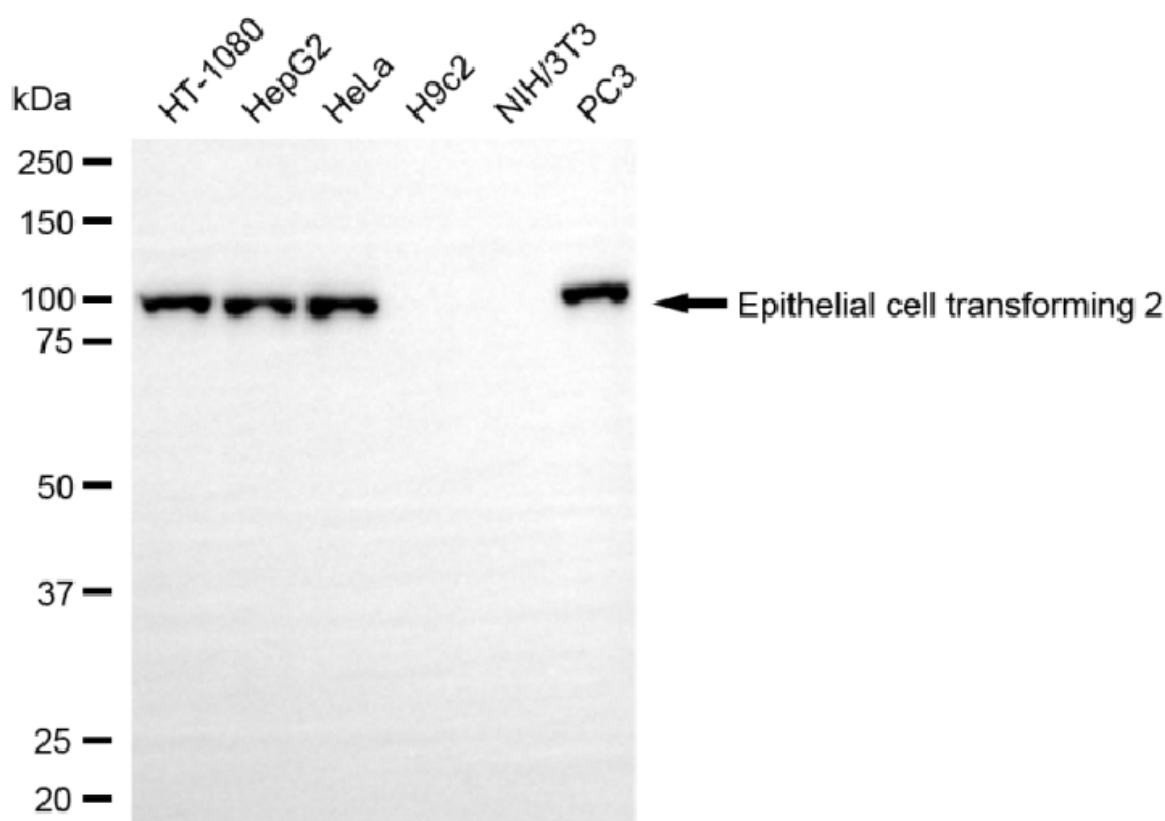
SUPPORT

SUPPORT@GENUINBIOTECH.COM
TEL: +1-540-855-7041

ORDERS

SALES@GENUINBIOTECH.COM
FAX: +1-540-855-7041

WWW.GENUINBIOTECH.COM



Copyright ©2025 Genuin Biotechnologies LLC

Western blotting analysis using anti-epithelial cell transforming 2 antibody (Cat#5689). Total cell lysates (30 µg) from various cell lines were loaded and separated by SDS-PAGE. The blot was incubated with anti-epithelial cell transforming 2 antibody (Cat#5689, 1:2,500) and HRP-conjugated goat anti-mouse secondary antibody (Cat#101, 1:20,000) respectively. Image was developed using NaQ™ ECL Substrate Kit (Cat#716).

SUPPORT

SUPPORT@GENUINBIOTECH.COM
TEL: +1-540-855-7041

ORDERS

SALES@GENUINBIOTECH.COM
FAX: +1-540-855-7041

WWW.GENUINBIOTECH.COM