

Catalog #: 5694

Aliases

GOLM1; Golgi Membrane Protein 1; Golgi Phosphoprotein 2; BA379P1.3; C9orf155; GOLPH2; GP73; Golgi Membrane Protein GP73; FLJ23608; Chromosome 9 Open Reading Frame 155; Epididymis Luminal Protein 46; Golgi Protein, 73-KD; PSEC0257; HEL46

Background

Gene Name: GOLM1

NCBI Gene Entry: [51280](#)

UniProt Entry: [Q8NBJ4](#)

Application Information

Molecular Weight: Predicted, 45 kDa; observed, 70 kDa

Clonality: Mouse monoclonal antibody

Clone ID: 25GB4935

Species Reactivity: Human

Applications Tested: Western blotting (WB)

Immunogen

Recombinant protein of human GOLM1

Isotype

Mouse IgG1

Storage Buffer

Supplied in PBS (pH 7.4) containing 50% glycerol, and 0.02% sodium azide.

Storage

Store at -20 °C for one year.

Recommended Dilutions

Western Blotting (WB): 1:400-1:2,000

Note: This product is for research use only.

Validation Data

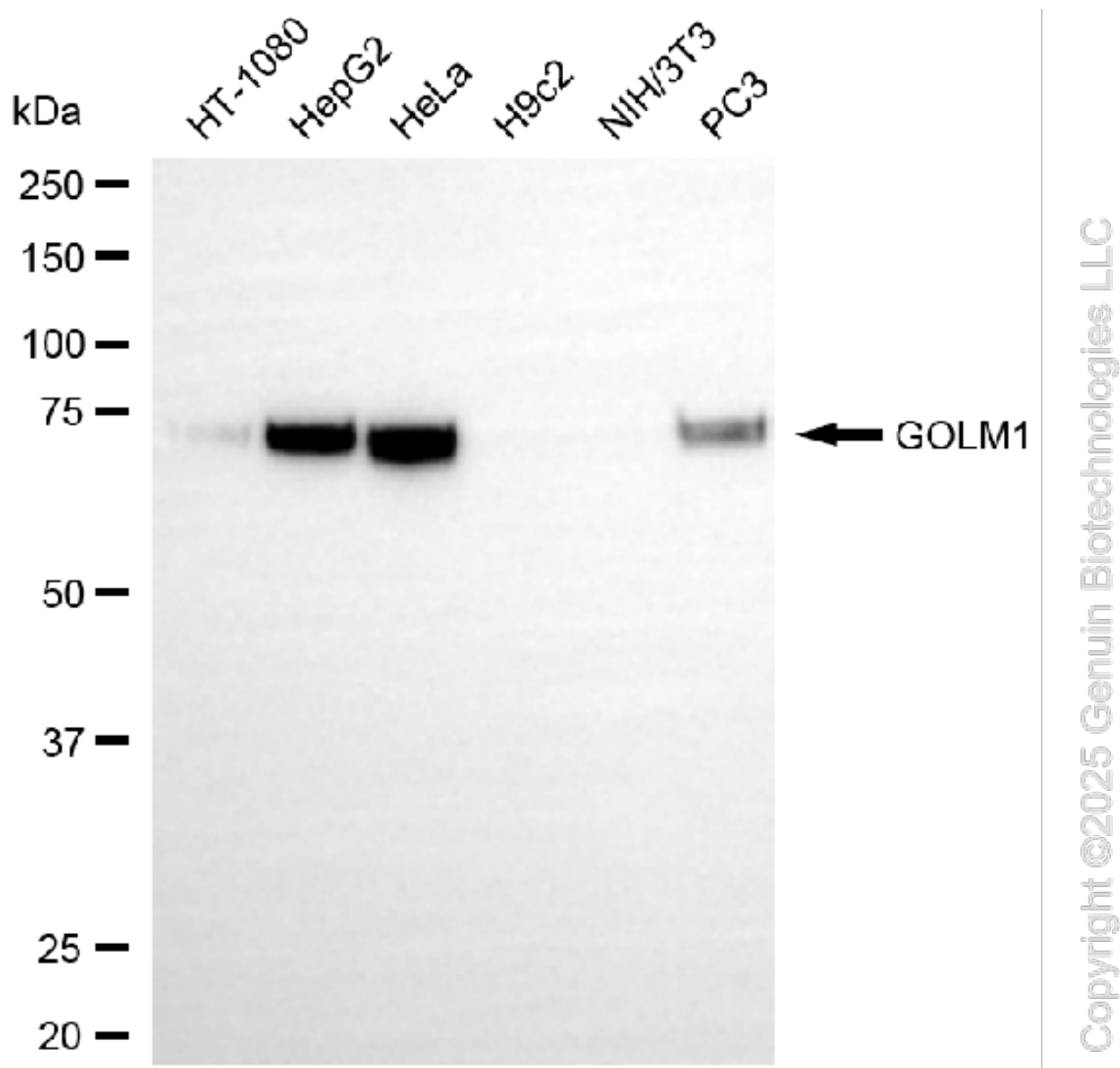
SUPPORT

SUPPORT@GENUINBIOTECH.COM
TEL: +1-540-855-7041

ORDERS

SALES@GENUINBIOTECH.COM
FAX: +1-540-855-7041

WWW.GENUINBIOTECH.COM



Western blotting analysis using anti-GOLM1 antibody (Cat#5694). Total cell lysates (30 μ g) from various cell lines were loaded and separated by SDS-PAGE. The blot was incubated with anti-GOLM1 antibody (Cat#5694, 1:1,000) and HRP-conjugated goat anti mouse secondary antibody (Cat#101, 1:20,000) respectively. Image was developed using NaQ™ ECL Substrate Kit (Cat#716).

SUPPORT

SUPPORT@GENUINBIOTECH.COM
TEL: +1-540-855-7041

ORDERS

SALES@GENUINBIOTECH.COM
FAX: +1-540-855-7041

WWW.GENUINBIOTECH.COM