

## Catalog #: 5706

### Aliases

MRPL11; Mitochondrial Ribosomal Protein L11; UL11m; 39S Ribosomal Protein L11, Mitochondrial; Large Ribosomal Subunit Protein UL11m; MRP-L11; Mitochondrial Large Ribosomal Subunit Protein UL11m; CGI-113; L11MT; L11mt

### Background

Gene Name: MRPL11

NCBI Gene Entry: [65003](#)

UniProt Entry: [Q9Y3B7](#)

### Application Information

Molecular Weight: Predicted, 21 kDa; observed, 19 kDa

Clonality: Mouse monoclonal antibody

Clone ID: 25GB4995

Species Reactivity: Human, mouse, rat

Applications Tested: Western blotting (WB)

### Immunogen

Recombinant protein of human MRPL11

### Isotype

Mouse IgG1

### Storage Buffer

Supplied in PBS (pH 7.4) containing 50% glycerol, and 0.02% sodium azide.

### Storage

Store at -20 °C for one year.

### Recommended Dilutions

Western Blotting (WB): 1:500-1:2,500

**Note:** This product is for research use only.

### Validation Data

---

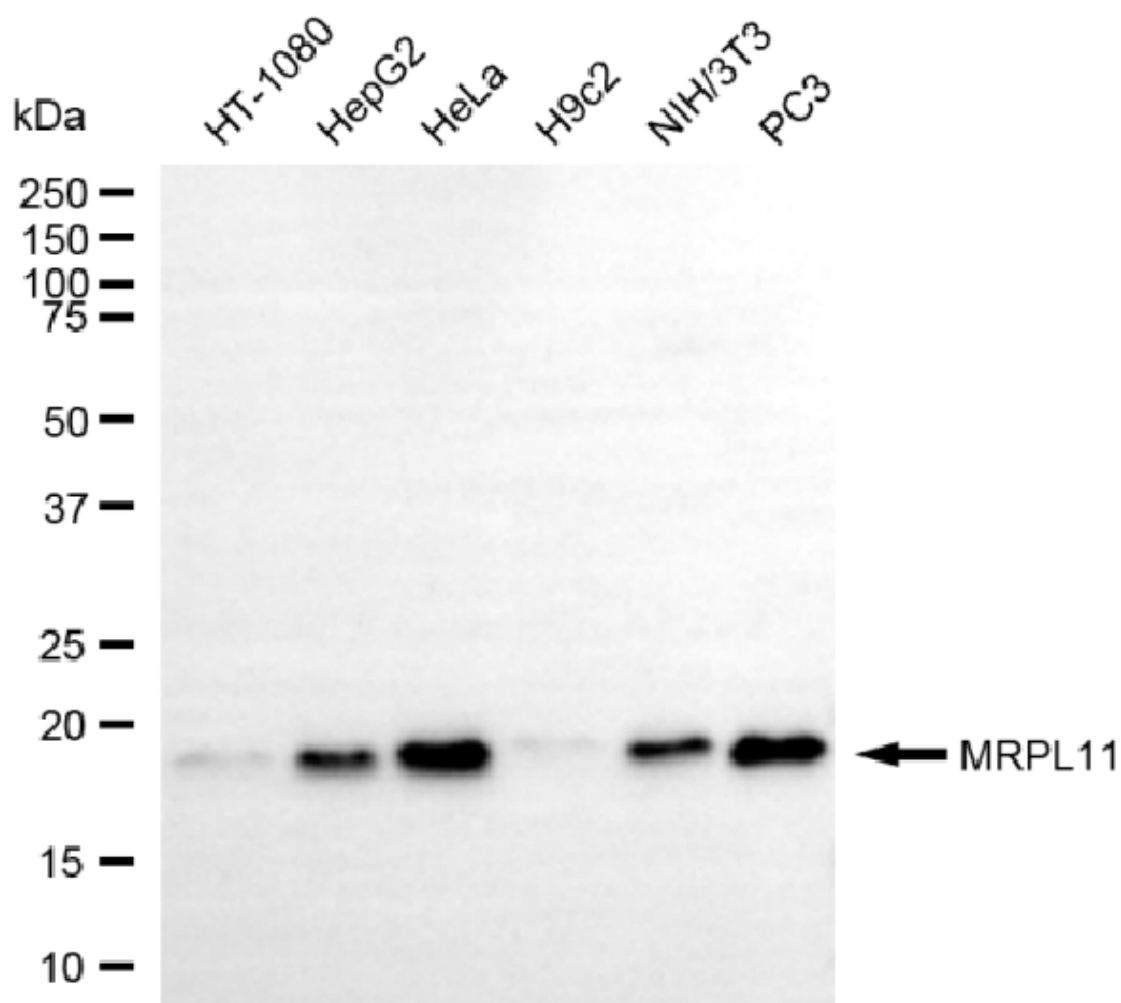
#### SUPPORT

SUPPORT@GENUINBIOTECH.COM  
TEL: +1-540-855-7041

#### ORDERS

SALES@GENUINBIOTECH.COM  
FAX: +1-540-855-7041

[WWW.GENUINBIOTECH.COM](http://WWW.GENUINBIOTECH.COM)



Copyright ©2025 Genuin Biotechnologies LLC

Western blotting analysis using anti-MRPL11 antibody (Cat#5706). Total cell lysates (30  $\mu$ g) from various cell lines were loaded and separated by SDS-PAGE. The blot was incubated with anti-MRPL11 antibody (Cat#5706, 1:2,500) and HRP-conjugated goat anti-mouse secondary antibody (Cat#101, 1:20,000) respectively. Image was developed using NaQ™ ECL Substrate Kit (Cat#716).