

Catalog #: 5708

Aliases

NAE1; NEDD8 Activating Enzyme E1 Subunit 1; APP-BP1; APPBP1; Ula-1; Amyloid Beta Precursor Protein-Binding Protein 1, 59 KDa ; Amyloid Beta Precursor Protein Binding Protein 1, 59kDa; NEDD8-Activating Enzyme E1 Regulatory Subunit; Amyloid Protein-Binding Protein 1; Proto-Oncogene Protein 1; Amyloid Beta Precursor Protein-Binding Protein 1, 59kD; NEDD8-Activating Enzyme E1 Subunit; Protooncogene Protein 1; A-116A10.1; NEDFIH; HPP1

Background

Gene Name: NAE1

NCBI Gene Entry: [8883](#)

UniProt Entry: [Q13564](#)

Application Information

Molecular Weight: Predicted, 60 kDa; observed, 60 kDa

Clonality: Mouse monoclonal antibody

Clone ID: 25GB5005

Species Reactivity: Human, rat

Applications Tested: Western blotting (WB)

Immunogen

Recombinant protein of human NAE1

Isotype

Mouse IgG1

Storage Buffer

Supplied in PBS (pH 7.4) containing 50% glycerol, and 0.02% sodium azide.

Storage

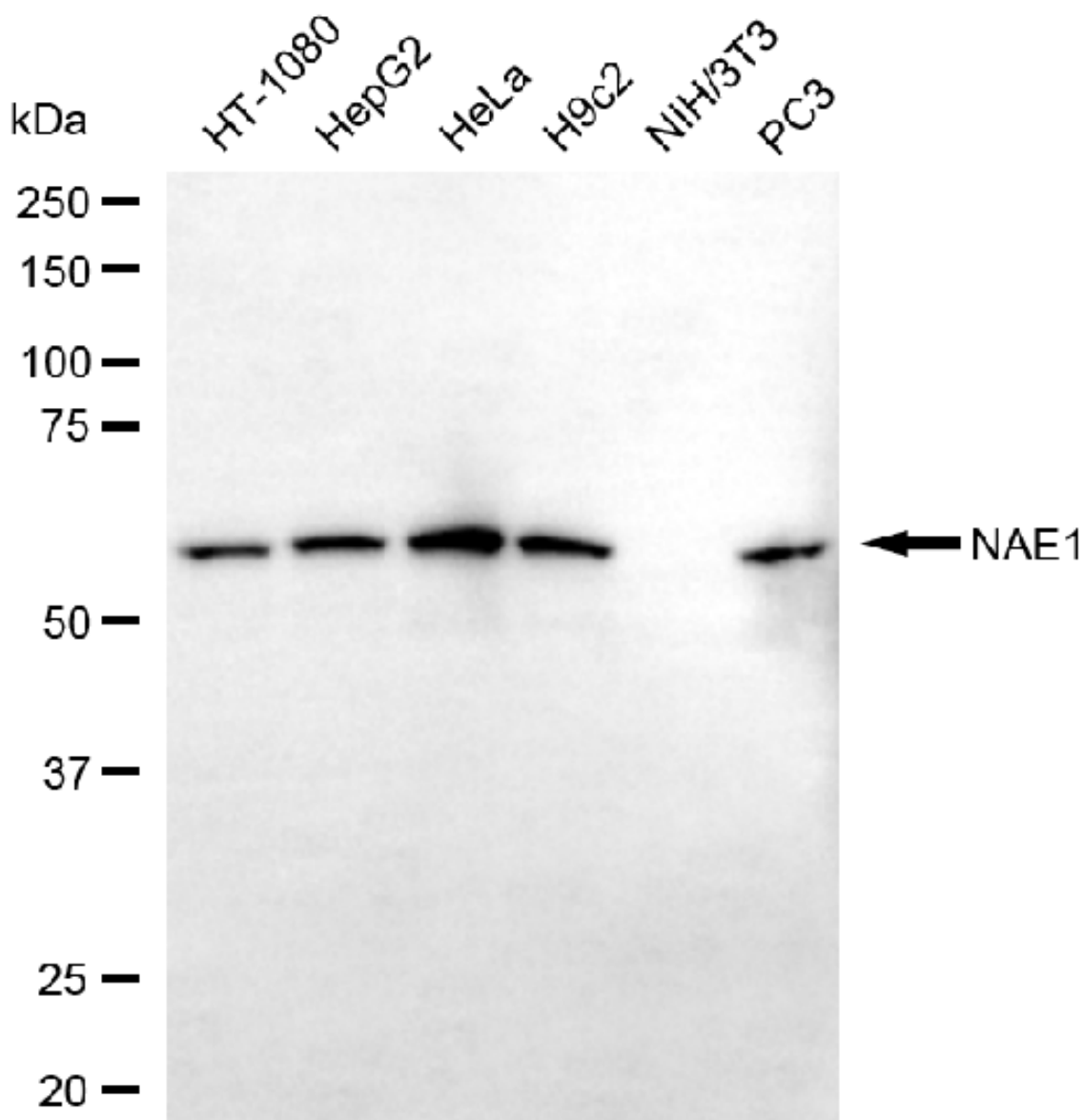
Store at -20 °C for one year.

Recommended Dilutions

Western Blotting (WB): 1:400-1:2,000

Note: This product is for research use only.

Validation Data



Copyright ©2025 Genuin Biotechnologies LLC

Western blotting analysis using anti-NAE1 antibody (Cat#5708). Total cell lysates (30 µg) from various cell lines were loaded and separated by SDS-PAGE. The blot was incubated with anti-NAE1 antibody (Cat#5708, 1:2,000) and HRP-conjugated goat anti-mouse secondary antibody (Cat#101, 1:20,000) respectively. Image was developed using FeQ™ ECL Substrate Kit (Cat#226).

SUPPORT

SUPPORT@GENUINBIOTECH.COM
TEL: +1-540-855-7041

ORDERS

SALES@GENUINBIOTECH.COM
FAX: +1-540-855-7041

WWW.GENUINBIOTECH.COM