

Catalog #: 5715

Aliases

AKAP8; A-Kinase Anchoring Protein 8; AKAP95; A Kinase (PRKA) Anchor Protein 8; A-Kinase Anchor Protein, 95kDa; A-Kinase Anchor Protein 8; DKFZp586B1222; AKAP 95; AKAP-8; A-Kinase Anchor Protein 95 KDa; AKAP-95

Background

Gene Name: AKAP8

NCBI Gene Entry: [10270](#)

UniProt Entry: [O43823](#)

Application Information

Molecular Weight: Predicted, 76 kDa; observed, 90 kDa

Clonality: Rabbit polyclonal antibody

Species Reactivity: Human, mouse, rat

Applications Tested: Western blotting (WB)

Immunogen

A synthesized peptide derived from human AKAP8

Isotype

Rabbit IgG

Storage Buffer

Supplied in PBS (pH 7.4) containing 50% glycerol, and 0.02% sodium azide.

Storage

Store at -20 °C for one year.

Recommended Dilutions

Western Blotting (WB): 1:400-1:2,000

Note: This product is for research use only.

Validation Data

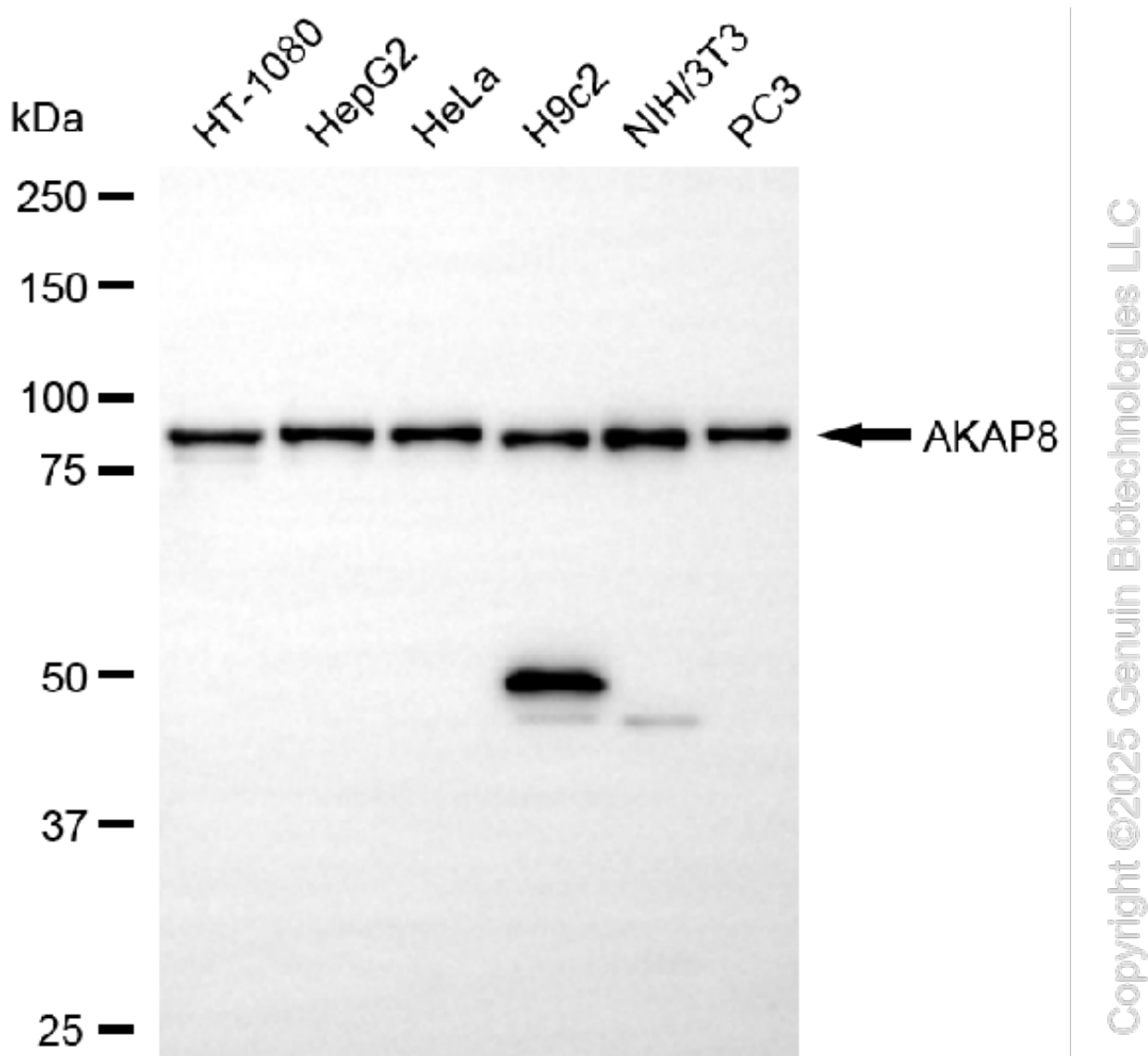
SUPPORT

SUPPORT@GENUINBIOTECH.COM
TEL: +1-540-855-7041

ORDERS

SALES@GENUINBIOTECH.COM
FAX: +1-540-855-7041

WWW.GENUINBIOTECH.COM



Western blotting analysis using anti-AKAP8 antibody (Cat#5715). Total cell lysates (30 µg) from various cell lines were loaded and separated by SDS-PAGE. The blot was incubated with anti-AKAP8 antibody (Cat#5715, 1:2,000) and HRP-conjugated goat anti-rabbit secondary antibody (Cat#201, 1:20,000) respectively. Image was developed using NaQ™ ECL Substrate Kit (Cat#716).

SUPPORT

SUPPORT@GENUINBIOTECH.COM
TEL: +1-540-855-7041

ORDERS

SALES@GENUINBIOTECH.COM
FAX: +1-540-855-7041

WWW.GENUINBIOTECH.COM