

Catalog #: 5720

Aliases

HLA-C; Major Histocompatibility Complex, Class I, C; HLA Class I Histocompatibility Antigen, C Alpha Chain; HLA-JY3; D6S204; PSORS1; HLAC; Major Histocompatibility Antigen HLA-C; MHC Class I Antigen Heavy Chain HLA-C; Human Leukocyte Antigen-C Alpha Chain; Psoriasis Susceptibility 1; Human Leukocyte Antigen C; HLA-C Antigen; HLA-Cw; HLC-C; MHC

Background

Gene Name: HLA-C

NCBI Gene Entry: [107](#)

UniProt Entry: [P10321](#)

Application Information

Molecular Weight: Predicted, 41 kDa; observed, 45 kDa

Clonality: Mouse monoclonal antibody

Clone ID: 25GB5065

Species Reactivity: Human

Applications Tested: Western blotting (WB)

Immunogen

Recombinant protein of human HLA-C

Isotype

Mouse IgG

Storage Buffer

Supplied in TBS (pH 7.4) containing 50% glycerol, 1% BSA and 0.02% Proclin 300.

Storage

Store at -20 °C for one year.

Recommended Dilutions

Western Blotting (WB): 1:500-1:2,500

Note: This product is for research use only.

Validation Data

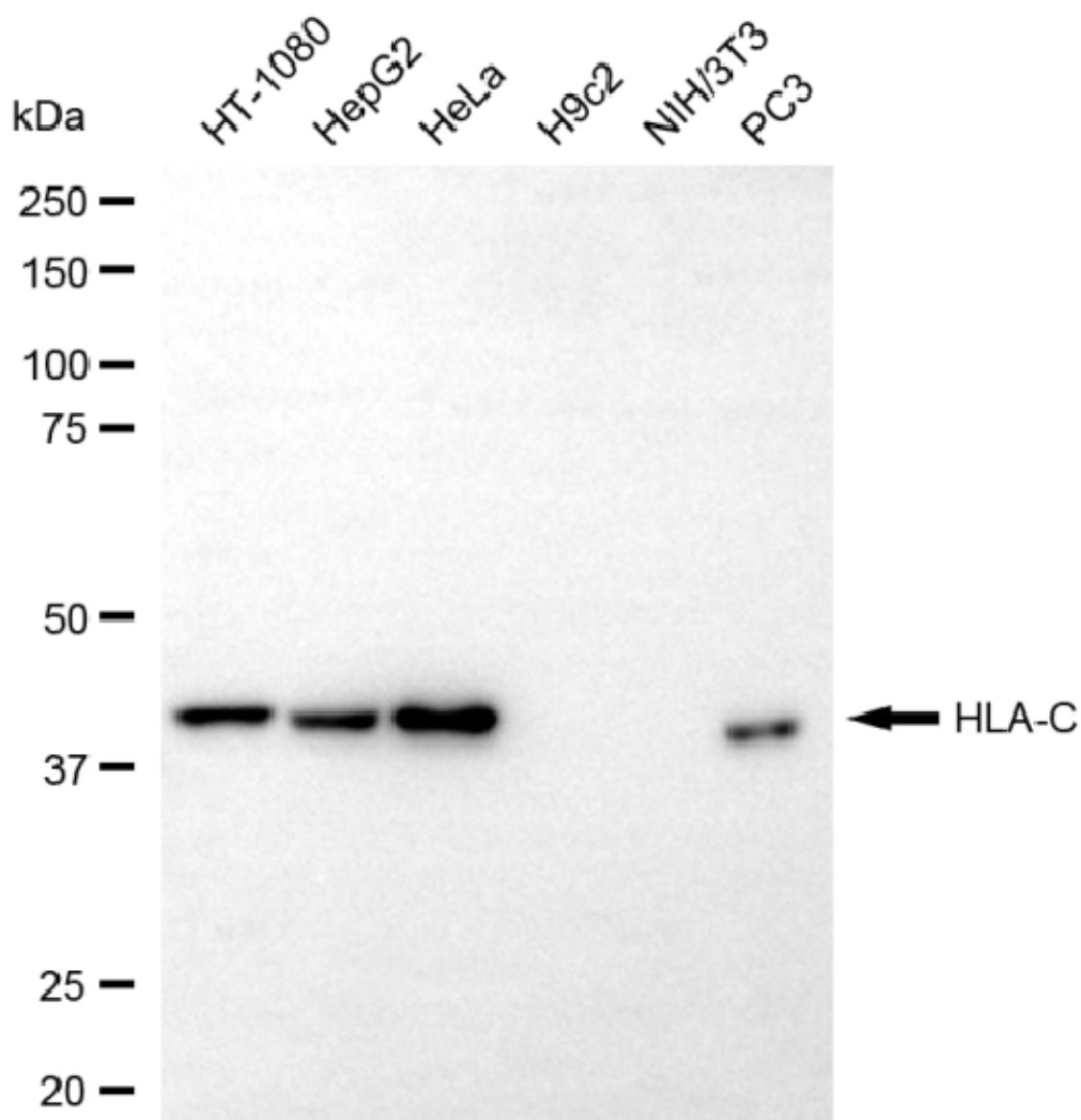
SUPPORT

SUPPORT@GENUINBIOTECH.COM
TEL: +1-540-855-7041

ORDERS

SALES@GENUINBIOTECH.COM
FAX: +1-540-855-7041

WWW.GENUINBIOTECH.COM



Copyright ©2025 Genuin Biotechnologies LLC

Western blotting analysis using anti-HLA-C antibody (Cat#5720). Total cell lysates (30 μ g) from various cell lines were loaded and separated by SDS-PAGE. The blot was incubated with anti-HLA-C antibody (Cat#5720, 1:2,500) and HRP-conjugated goat anti-mouse secondary antibody (Cat#101, 1:20,000) respectively. Image was developed using FeQ™ ECL Substrate Kit (Cat#226).

SUPPORT

SUPPORT@GENUINBIOTECH.COM
TEL: +1-540-855-7041

ORDERS

SALES@GENUINBIOTECH.COM
FAX: +1-540-855-7041

WWW.GENUINBIOTECH.COM