

Catalog #: 5725

Aliases

PDE1B; Phosphodiesterase 1B; PDES1B; Dual Specificity Calcium/Calmodulin-Dependent 3',5'-Cyclic Nucleotide Phosphodiesterase 1B; Phosphodiesterase 1B, Calmodulin-Dependent; 63 KDa Cam-PDE; EC 3.1.4.17; Cam-PDE 1B; Presumed 63kDa Form Of The Type 1 Cyclic Nucleotide Phosphodiesterase Family Known As PDE1B; Calcium/Calmodulin-Dependent 3',5'-Cyclic Nucleotide Phosphodiesterase 1B; Calcium/Calmodulin-Stimulated Cyclic Nucleotide Phosphodiesterase; Epididymis Secretory Sperm Binding Protein Li 79p; Calmodulin-Stimulated Phosphodiesterase PDE1B1; HEL-S-79p; EC 3.1.4; PDE1B1

Background

Gene Name: PDE1B

NCBI Gene Entry: [5153](#)

UniProt Entry: [Q01064](#)

Application Information

Molecular Weight: Predicted, 61 kDa; observed, 61 kDa

Clonality: Mouse monoclonal antibody

Clone ID: 25GB5090

Species Reactivity: Human

Applications Tested: Western blotting (WB)

Immunogen

Recombinant protein of human PDE1B

Isotype

Mouse IgG2b

Storage Buffer

Supplied in PBS (pH 7.4) containing 50% glycerol, and 0.02% sodium azide.

Storage

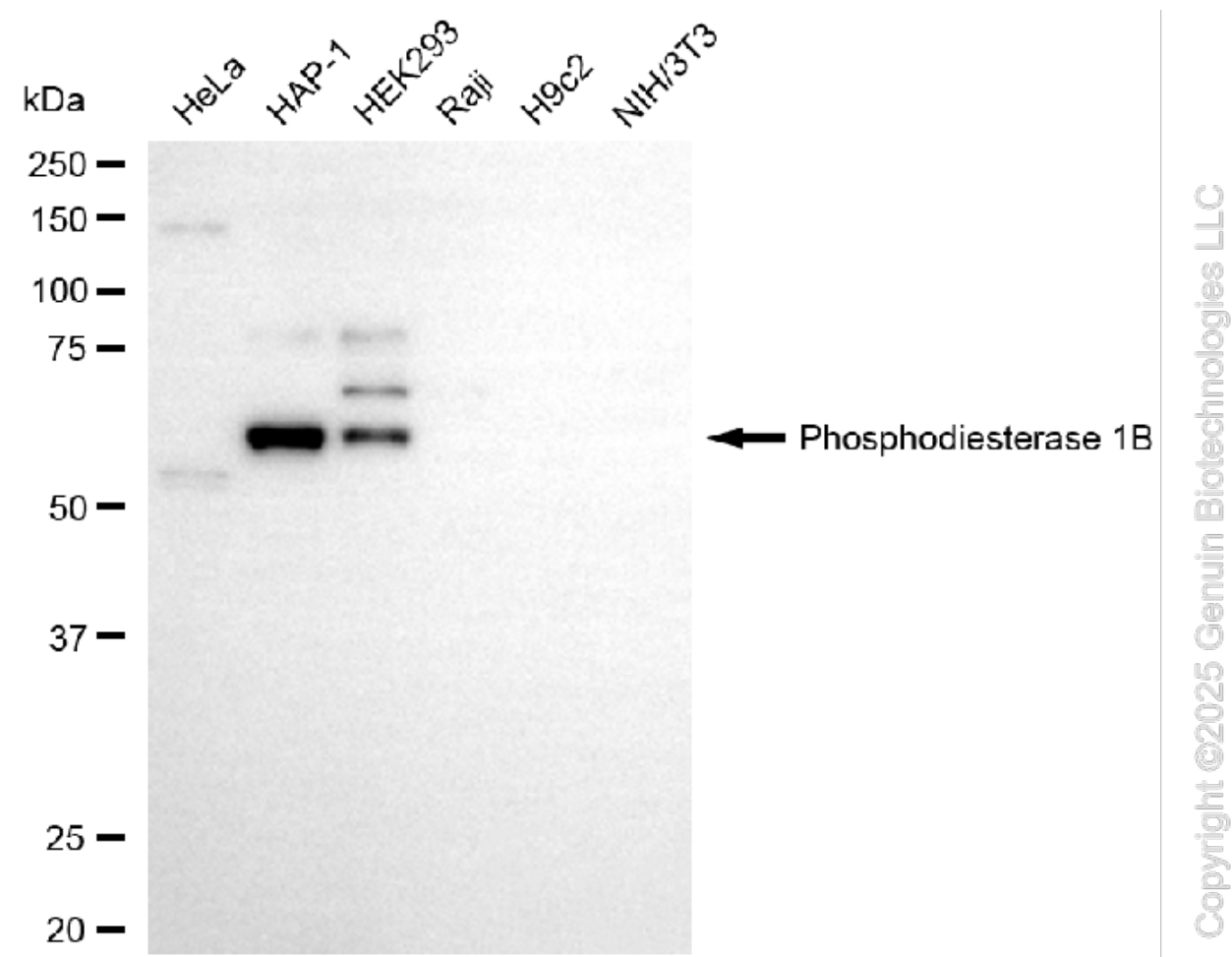
Store at -20 °C for one year.

Recommended Dilutions

Western Blotting (WB): 1:500-1:2,500

Note: This product is for research use only.

Validation Data



Western blotting analysis using anti-phosphodiesterase 1B antibody (Cat#5725). Total cell lysates (30 µg) from various cell lines were loaded and separated by SDS-PAGE. The blot was incubated with anti-phosphodiesterase 1B antibody (Cat#5725, 1:2,500) and HRP-conjugated goat anti-mouse secondary antibody (Cat#101, 1:20,000) respectively. Image was developed using FeQ™ ECL Substrate Kit (Cat#226).

SUPPORT

SUPPORT@GENUINBIOTECH.COM
TEL: +1-540-855-7041

ORDERS

SALES@GENUINBIOTECH.COM
FAX: +1-540-855-7041

WWW.GENUINBIOTECH.COM