

## Catalog #: 5726

### Aliases

ACAT1; Acetyl-CoA Acetyltransferase 1; THIL; ACAT; Acetyl-CoA Acetyltransferase, Mitochondrial; Acetyl-Coenzyme A Acetyltransferase 1; Acetoacetyl Coenzyme A Thiolase; Acetoacetyl-CoA Thiolase; EC 2.3.1.9; MAT; T2; Mitochondrial Acetoacetyl-CoA Thiolase; Testicular Tissue Protein Li 198; EC 2.3.1

### Background

Gene Name: ACAT1  
NCBI Gene Entry: [38](#)  
UniProt Entry: [P24752](#)

### Application Information

Molecular Weight: Predicted, 45 kDa; observed, 41 kDa  
Clonality: Rabbit polyclonal antibody  
Species Reactivity: Human, mouse, rat  
Applications Tested: Western blotting (WB)

### Immunogen

A synthesized peptide derived from human ACAT1

### Isotype

Rabbit IgG

### Storage Buffer

Supplied in PBS (pH 7.4) containing 50% glycerol, and 0.02% sodium azide.

### Storage

Store at -20 °C for one year.

### Recommended Dilutions

Western Blotting (WB): 1:400-1:2,000

**Note:** This product is for research use only.

### Validation Data

---

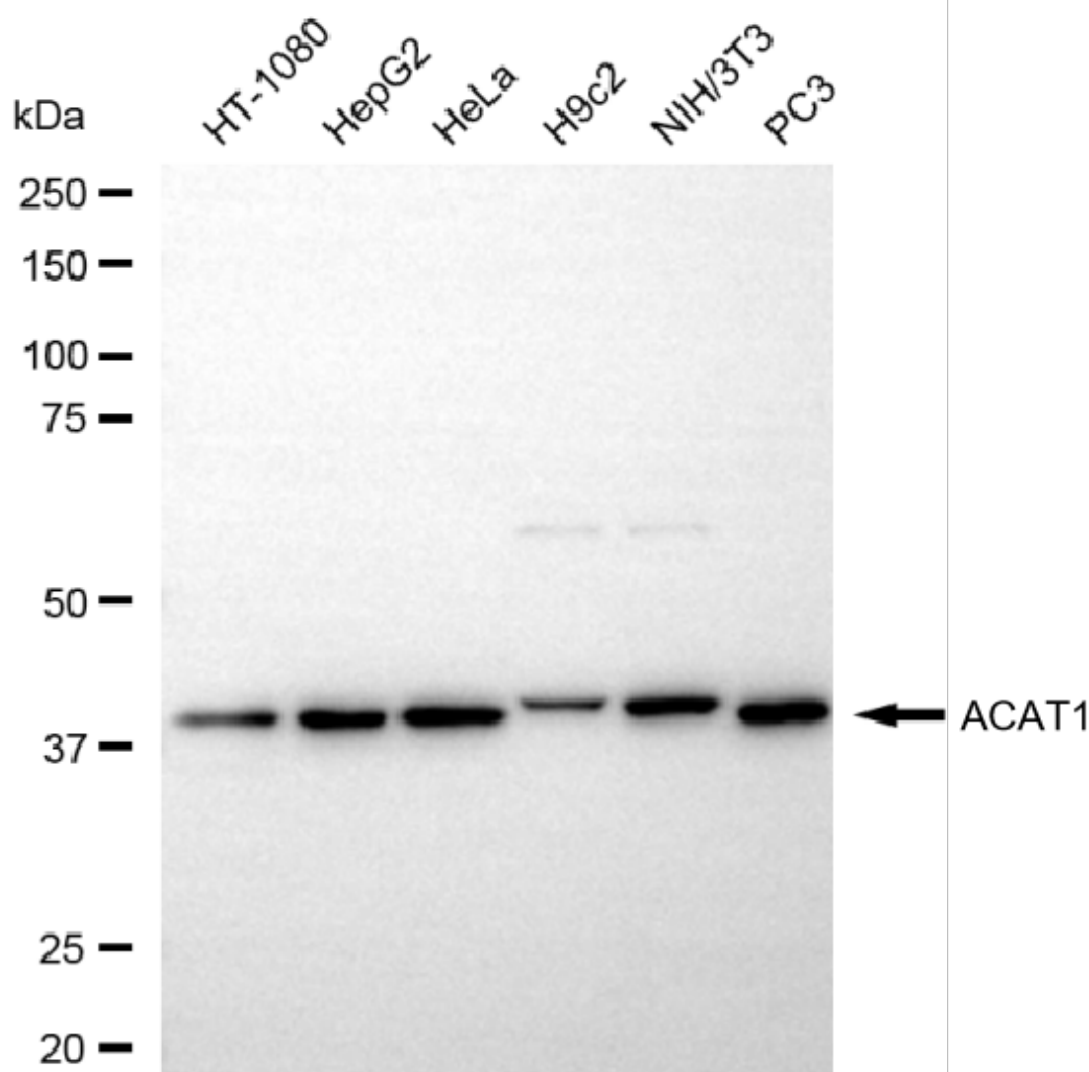
#### SUPPORT

SUPPORT@GENUINBIOTECH.COM  
TEL: +1-540-855-7041

#### ORDERS

SALES@GENUINBIOTECH.COM  
FAX: +1-540-855-7041

[WWW.GENUINBIOTECH.COM](http://WWW.GENUINBIOTECH.COM)



Copyright ©2025 Genuin Biotechnologies LLC

Western blotting analysis using anti-ACAT1 antibody (Cat#5726). Total cell lysates (30  $\mu$ g) from various cell lines were loaded and separated by SDS-PAGE. The blot was incubated with anti-ACAT1 antibody (Cat#5726, 1:2,000) and HRP-conjugated goat anti-rabbit secondary antibody (Cat#201, 1:20,000) respectively. Image was developed using NaQ™ ECL Substrate Kit (Cat#716).

**SUPPORT**

SUPPORT@GENUINBIOTECH.COM  
TEL: +1-540-855-7041

**ORDERS**

SALES@GENUINBIOTECH.COM  
FAX: +1-540-855-7041

[WWW.GENUINBIOTECH.COM](http://WWW.GENUINBIOTECH.COM)