

Catalog #: 5727

Aliases

ARG2; Arginase 2; Arginase-2, Mitochondrial; Kidney-Type Arginase; Non-Hepatic Arginase; Arginase, Type II; Type II Arginase; Arginase II; EC 3.5.3.1; L-Arginine Amidinohydrolase; L-Arginine Ureahydrolase; Nonhepatic Arginase; Kidney Arginase; EC 3.5.3

Background

Gene Name: ARG2

NCBI Gene Entry: [384](#)

UniProt Entry: [P78540](#)

Application Information

Molecular Weight: Predicted, 39 kDa; observed, 39 kDa

Clonality: Rabbit polyclonal antibody

Species Reactivity: Human, rat

Applications Tested: Western blotting (WB)

Immunogen

A synthesized peptide derived from human Arginase 2

Isotype

Rabbit IgG

Storage Buffer

Supplied in PBS (pH 7.4) containing 50% glycerol, and 0.02% sodium azide.

Storage

Store at -20 °C for one year.

Recommended Dilutions

Western Blotting (WB): 1:400-1:2,000

Note: This product is for research use only.

Validation Data

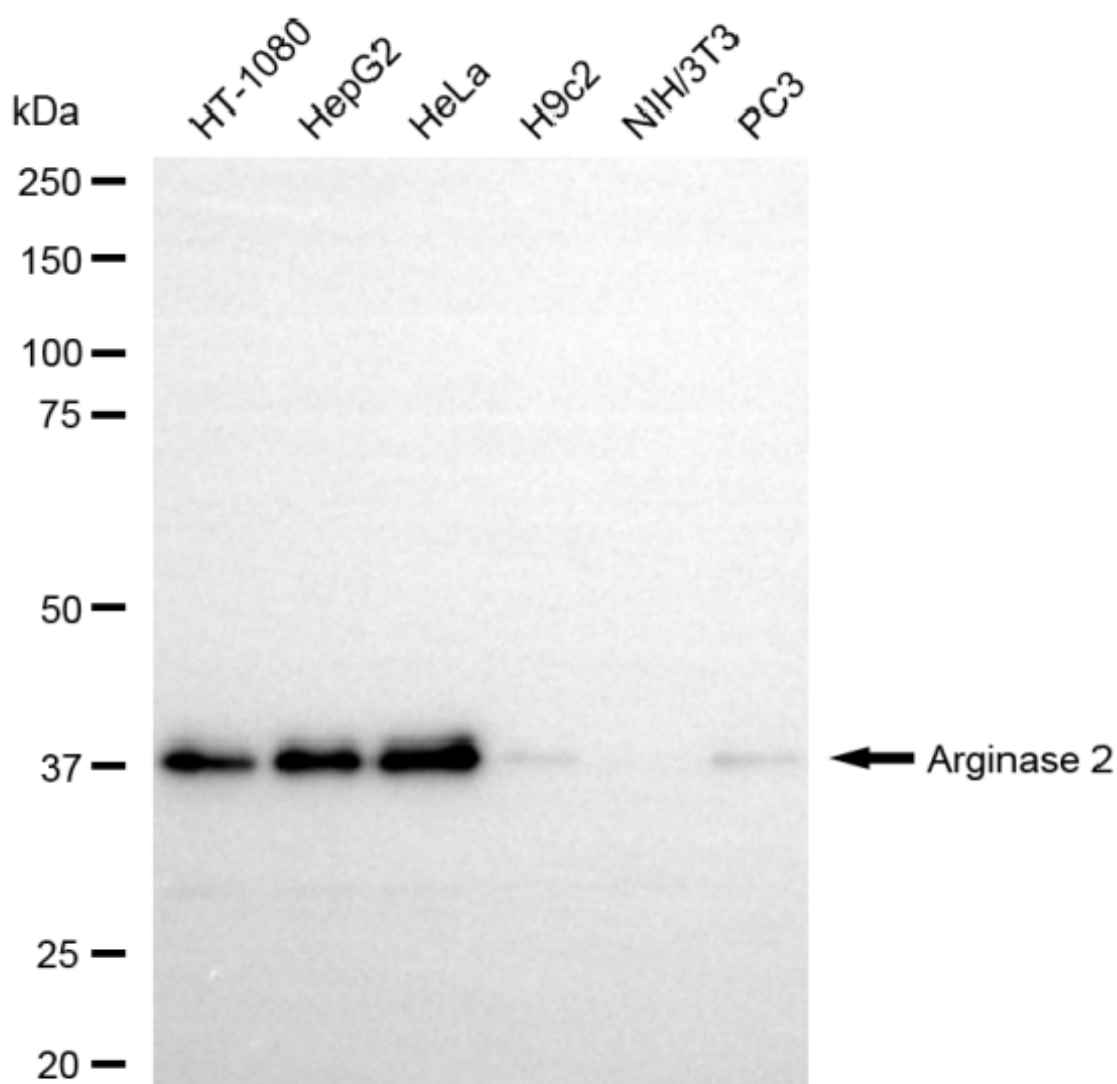
SUPPORT

SUPPORT@GENUINBIOTECH.COM
TEL: +1-540-855-7041

ORDERS

SALES@GENUINBIOTECH.COM
FAX: +1-540-855-7041

WWW.GENUINBIOTECH.COM



Western blotting analysis using anti-arginase 2 antibody (Cat#5727). Total cell lysates (30 μ g) from various cell lines were loaded and separated by SDS-PAGE. The blot was incubated with anti-arginase 2 antibody (Cat#5727, 1:2,000) and HRP-conjugated goat anti-rabbit secondary antibody (Cat#201, 1:20,000) respectively. Image was developed using NaQTM ECL Substrate Kit (Cat#716).

SUPPORT

SUPPORT@GENUINBIOTECH.COM
TEL: +1-540-855-7041

ORDERS

SALES@GENUINBIOTECH.COM
FAX: +1-540-855-7041

WWW.GENUINBIOTECH.COM