

# Anti-Cathepsin D LC Rabbit Polyclonal Antibody



**Catalog #: 5731**

## Aliases

CTSD; Cathepsin D; CLN10; CPSD; Ceroid-Lipofuscinosis, Neuronal 10; EC 3.4.23.5; Epididymis Secretory Sperm Binding Protein Li 130P; Cathepsin D (Lysosomal Aspartyl Protease); Lysosomal Aspartyl Peptidase; Lysosomal Aspartyl Protease; HEL-S-130P; EC 3.4.23

## Background

Gene Name: CTSD  
NCBI Gene Entry: [1509](#)  
UniProt Entry: [P07339](#)

## Application Information

Molecular Weight: Predicted, 45 kDa; observed, 14 kDa  
Clonality: Rabbit polyclonal antibody  
Species Reactivity: Human  
Applications Tested: Western blotting (WB)

## Immunogen

A synthesized peptide derived from human Cathepsin D LC

## Isotype

Rabbit IgG

## Storage Buffer

Supplied in PBS (pH 7.4) containing 50% glycerol, and 0.02% sodium azide.

## Storage

Store at -20 °C for one year.

## Recommended Dilutions

Western Blotting (WB): 1:400-1:2,000

**Note:** This product is for research use only.

## Validation Data

---

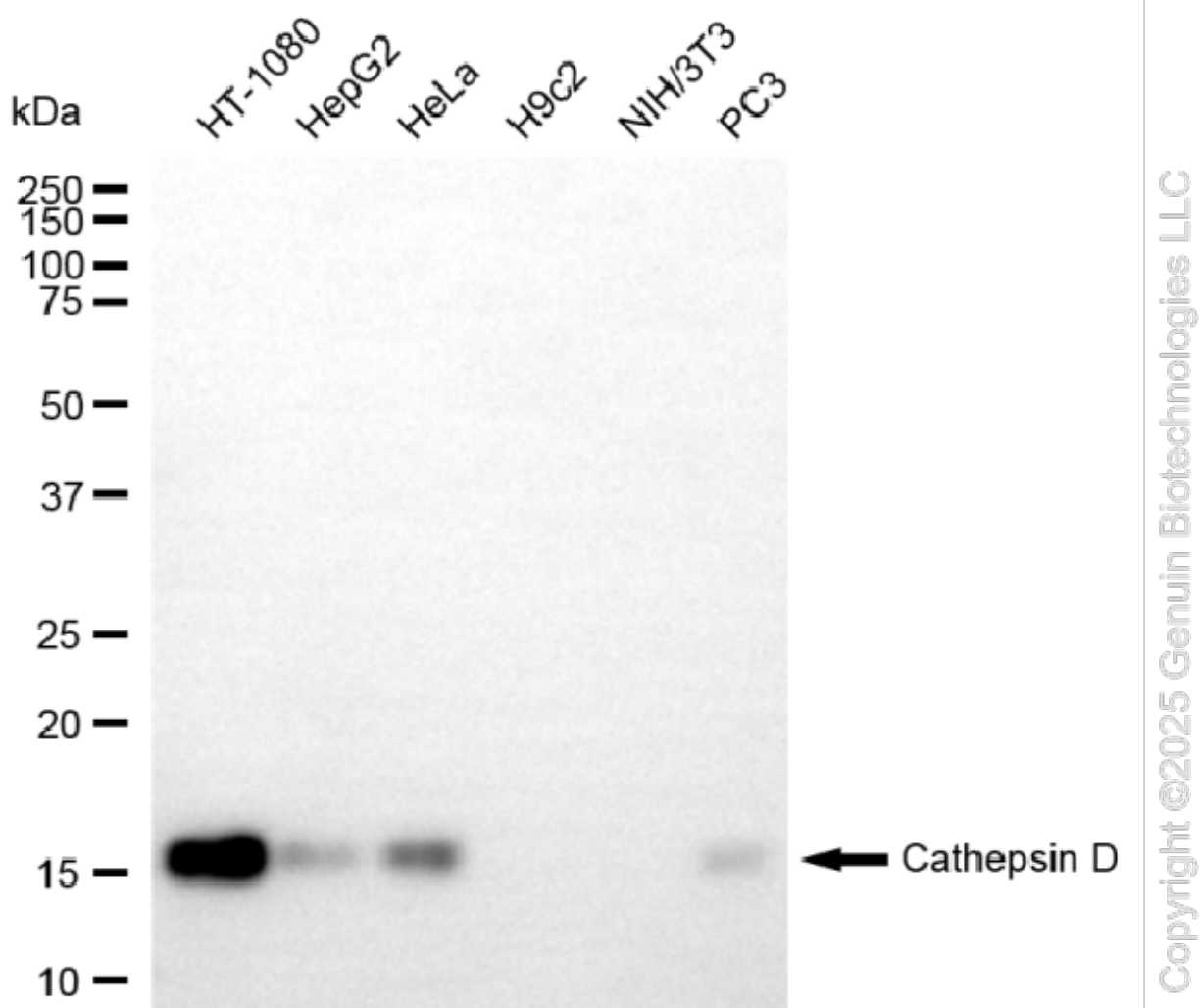
### SUPPORT

SUPPORT@GENUINBIOTECH.COM  
TEL: +1-540-855-7041

### ORDERS

SALES@GENUINBIOTECH.COM  
FAX: +1-540-855-7041

[WWW.GENUINBIOTECH.COM](http://WWW.GENUINBIOTECH.COM)



Western blotting analysis using anti-cathepsin D LC antibody (Cat#5731). Total cell lysates (30  $\mu$ g) from various cell lines were loaded and separated by SDS-PAGE. The blot was incubated with anti-cathepsin D LC antibody (Cat#5731, 1:2,000) and HRP-conjugated goat anti-rabbit secondary antibody (Cat#201, 1:20,000) respectively. Image was developed using NaQ™ ECL Substrate Kit (Cat#716).