

## Catalog #: 5736

### Aliases

LGALS1; Galectin 1; GBP; Lectin, Galactoside-Binding, Soluble, 1; Beta-Galactoside-Binding Lectin L-14-I; Putative MAPK-Activating Protein PM12; 14 KDa Laminin-Binding Protein; Lactose-Binding Lectin 1; S-Lac Lectin 1; 14 KDa Lectin; Galectin-1; Galaptin; HLBP14; Gal-1; HBL; HPL; Epididymis Secretory Sperm Binding Protein; Beta-Galactoside-Binding Protein 14kDa; Lectin Galactoside-Binding Soluble 1; GAL1

### Background

Gene Name: LGALS1

NCBI Gene Entry: [3956](#)

UniProt Entry: [P09382](#)

### Application Information

Molecular Weight: Predicted, 15 kDa; observed, 15 kDa

Clonality: Rabbit polyclonal antibody

Species Reactivity: Human

Applications Tested: Western blotting (WB)

### Immunogen

A synthesized peptide derived from human Galectin 1

### Isotype

Rabbit IgG

### Storage Buffer

Supplied in PBS (pH 7.4) containing 50% glycerol, and 0.02% sodium azide.

### Storage

Store at -20 °C for one year.

### Recommended Dilutions

Western Blotting (WB): 1:400-1:2,000

**Note:** This product is for research use only.

### Validation Data

---

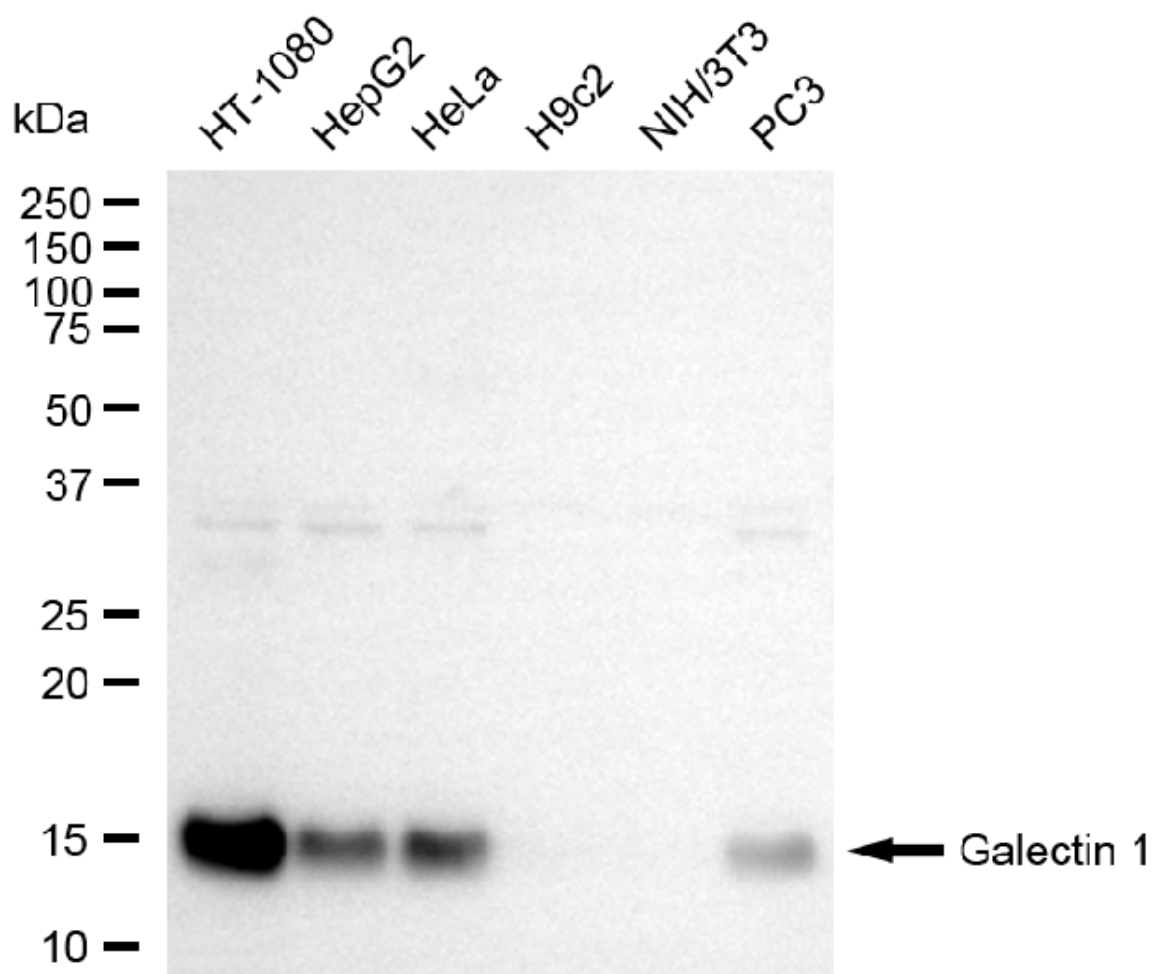
#### SUPPORT

SUPPORT@GENUINBIOTECH.COM  
TEL: +1-540-855-7041

#### ORDERS

SALES@GENUINBIOTECH.COM  
FAX: +1-540-855-7041

[WWW.GENUINBIOTECH.COM](http://WWW.GENUINBIOTECH.COM)



Copyright ©2025 Genuin Biotechnologies LLC

Western blotting analysis using anti-galectin 1 antibody (Cat#5736). Total cell lysates (30 µg) from various cell lines were loaded and separated by SDS-PAGE. The blot was incubated with anti-galectin 1 antibody (Cat#5736, 1:2,000) and HRP-conjugated goat anti-rabbit secondary antibody (Cat#201, 1:20,000) respectively. Image was developed using NaQ™ ECL Substrate Kit (Cat#716).