

## Catalog #: 5737

### Aliases

LGALS3; Galectin 3; GALIG; Advanced Glycation End-Product Receptor 3; Lectin, Galactoside-Binding, Soluble, 3; Carbohydrate-Binding Protein 35; Galactose-Specific Lectin 3; Laminin-Binding Protein; IgE-Binding Protein; 35 KDa Lectin; Lectin L-29; Galectin-3; LGALS2; MAC-2; GALBP; MAC2; Epididymis Secretory Sperm Binding Protein; Galactoside-Binding Protein; MAC-2 Antigen; Mac-2 Antigen; CBP 35; CBP35; Gal-3; GAL3; L-31; L31

### Background

Gene Name: LGALS3

NCBI Gene Entry: [3958](#)

UniProt Entry: [P17931](#)

### Application Information

Molecular Weight: Predicted, 26 kDa; observed, 31 kDa

Clonality: Rabbit polyclonal antibody

Species Reactivity: Human, mouse, rat

Applications Tested: Western blotting (WB)

### Immunogen

A synthesized peptide derived from human Galectin 3

### Isotype

Rabbit IgG

### Storage Buffer

Supplied in PBS (pH 7.4) containing 50% glycerol, and 0.02% sodium azide.

### Storage

Store at -20 °C for one year.

### Recommended Dilutions

Western Blotting (WB): 1:400-1:2,000

**Note:** This product is for research use only.

### Validation Data

---

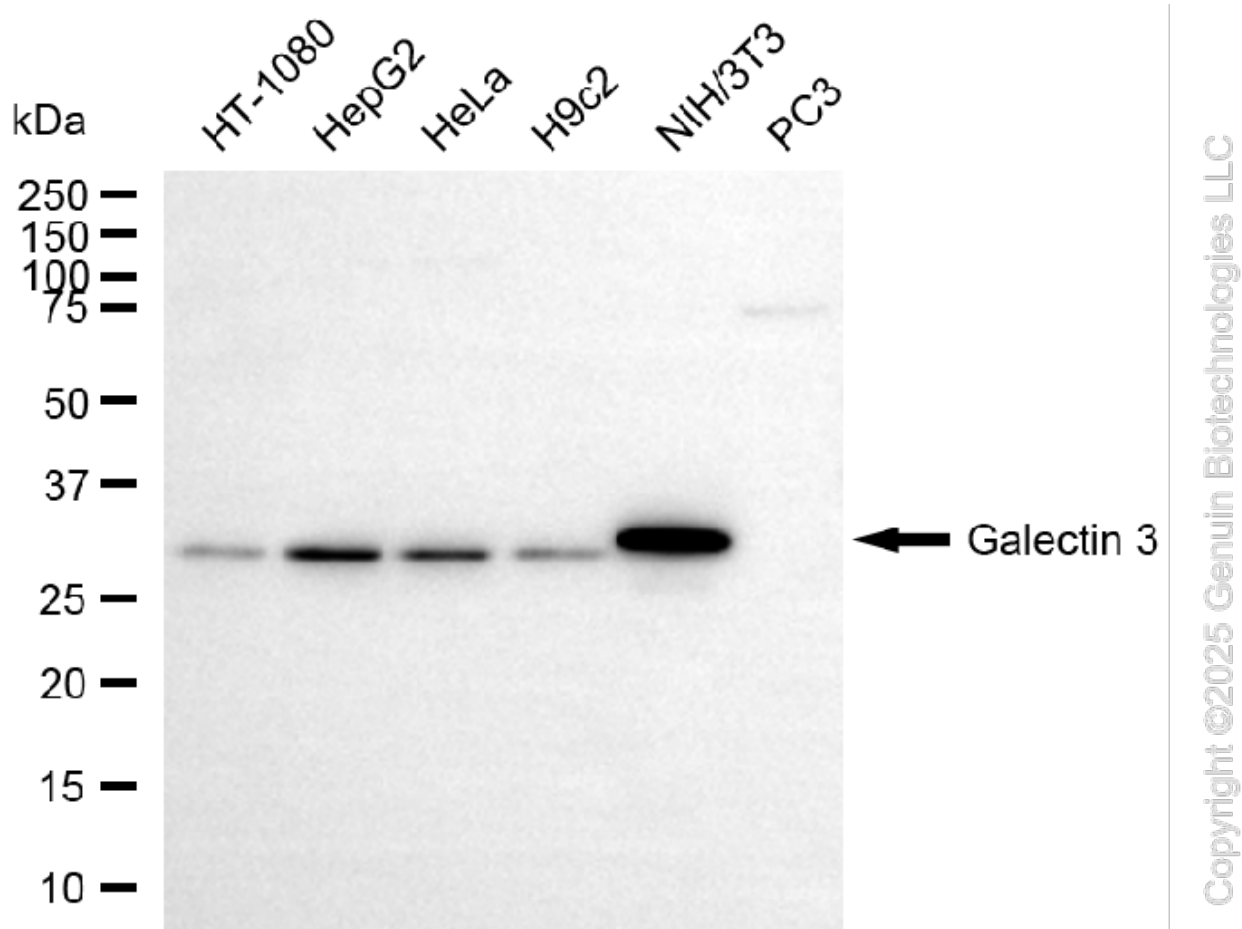
#### SUPPORT

SUPPORT@GENUINBIOTECH.COM  
TEL: +1-540-855-7041

#### ORDERS

SALES@GENUINBIOTECH.COM  
FAX: +1-540-855-7041

[WWW.GENUINBIOTECH.COM](http://WWW.GENUINBIOTECH.COM)



Western blotting analysis using anti-galectin 3 antibody (Cat#5737). Total cell lysates (30  $\mu$ g) from various cell lines were loaded and separated by SDS-PAGE. The blot was incubated with anti-galectin 3 antibody (Cat#5737, 1:2,000) and HRP-conjugated goat anti-rabbit secondary antibody (Cat#201, 1:20,000) respectively. Image was developed using NaQ<sup>TM</sup> ECL Substrate Kit (Cat#716).

**SUPPORT**

SUPPORT@GENUINBIOTECH.COM  
TEL: +1-540-855-7041

**ORDERS**

SALES@GENUINBIOTECH.COM  
FAX: +1-540-855-7041

[WWW.GENUINBIOTECH.COM](http://WWW.GENUINBIOTECH.COM)