

Catalog #: 5740

Aliases

COPS3; COP9 Signalosome Subunit 3; SGN3; CSN3; JAB1-Containing Signalosome Subunit 3; COP9 Signalosome Complex Subunit 3; Signalosome Subunit 3; COP9 (Constitutive Photomorphogenic, Arabidopsis, Homolog) Subunit 3; COP9 Constitutive Photomorphogenic Homolog Subunit 3 (Arabidopsis); COP9 Constitutive Photomorphogenic Homolog Subunit 3; COP9 Complex Subunit 3

Background

Gene Name: COPS3

NCBI Gene Entry: [8533](#)

UniProt Entry: [Q9UNS2](#)

Application Information

Molecular Weight: Predicted, 48 kDa; observed, 40 kDa

Clonality: Rabbit polyclonal antibody

Species Reactivity: Human, mouse, rat

Applications Tested: Western blotting (WB)

Immunogen

A synthesized peptide derived from human COPS3

Isotype

Rabbit IgG

Storage Buffer

Supplied in PBS (pH 7.4) containing 50% glycerol, and 0.02% sodium azide.

Storage

Store at -20 °C for one year.

Recommended Dilutions

Western Blotting (WB): 1:400-1:2,000

Note: This product is for research use only.

Validation Data

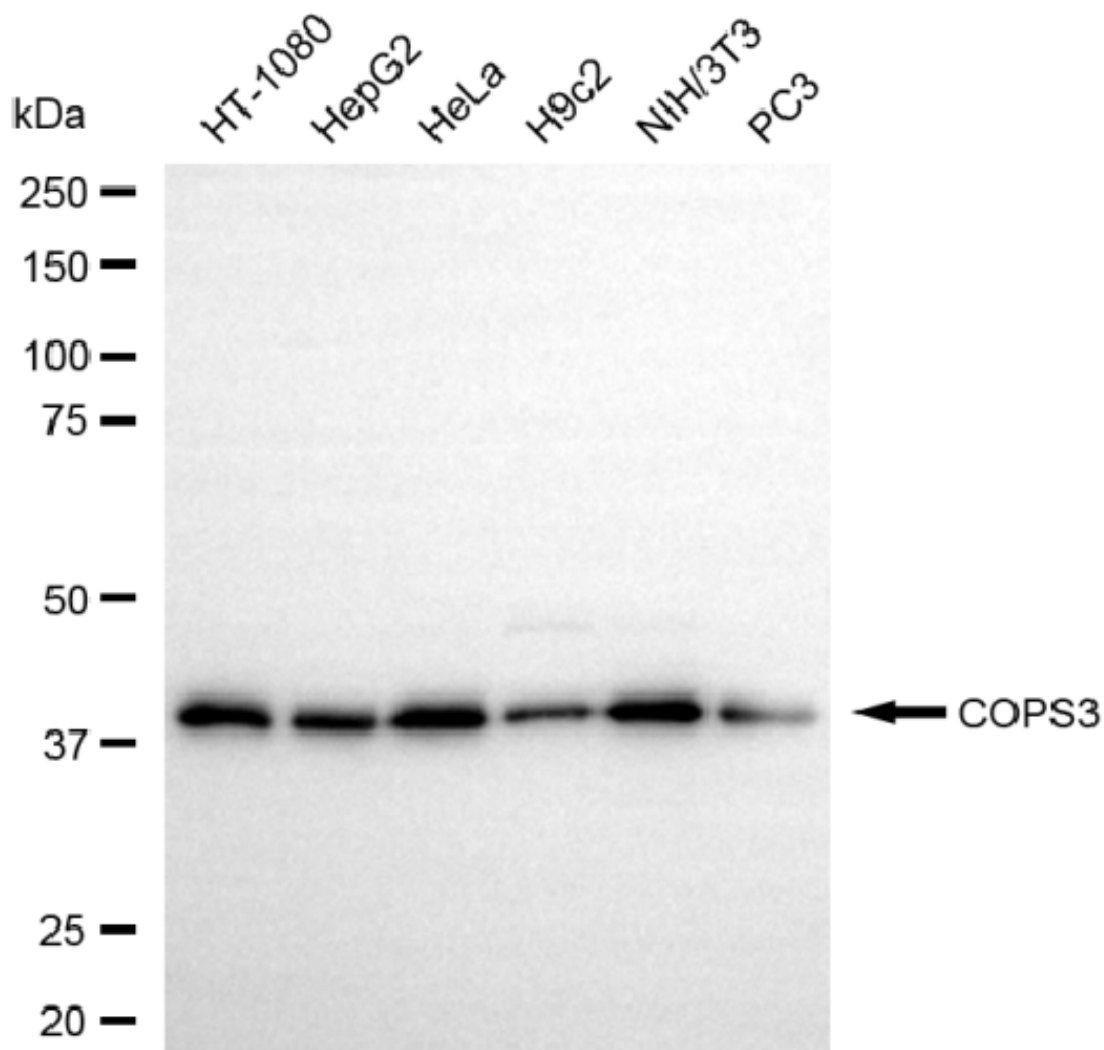
SUPPORT

SUPPORT@GENUINBIOTECH.COM
TEL: +1-540-855-7041

ORDERS

SALES@GENUINBIOTECH.COM
FAX: +1-540-855-7041

WWW.GENUINBIOTECH.COM



Copyright ©2025 Genuin Biotechnologies LLC

Western blotting analysis using anti-COPS3 antibody (Cat#5740). Total cell lysates (30 μ g) from various cell lines were loaded and separated by SDS-PAGE. The blot was incubated with anti-COPS3 antibody (Cat#5740, 1:2,000) and HRP-conjugated goat anti-rabbit secondary antibody (Cat#201, 1:20,000) respectively. Image was developed using NaQ™ ECL Substrate Kit (Cat#716).

SUPPORT

SUPPORT@GENUINBIOTECH.COM
TEL: +1-540-855-7041

ORDERS

SALES@GENUINBIOTECH.COM
FAX: +1-540-855-7041

WWW.GENUINBIOTECH.COM