

Catalog #: 5741

Aliases

PDLIM1; PDZ And LIM Domain 1; CLP36; CLP-36; HCLIM1; Elfin; CLIM1; Carboxyl Terminal LIM Domain Protein 1; PDZ And LIM Domain Protein 1; LIM Domain Protein CLP-36; Epididymis Secretory Protein Li 112; C-Terminal LIM Domain Protein 1; PDZ And LIM Domain 1 (Elfin); HEL-S-112

Background

Gene Name: PDLIM1

NCBI Gene Entry: [9124](#)

UniProt Entry: [O00151](#)

Application Information

Molecular Weight: Predicted, 36 kDa; observed, 35 kDa

Clonality: Rabbit polyclonal antibody

Species Reactivity: Human, mouse, rat

Applications Tested: Western blotting (WB)

Immunogen

A synthesized peptide derived from human PDLIM1

Isotype

Rabbit IgG

Storage Buffer

Supplied in PBS (pH 7.4) containing 50% glycerol, and 0.02% sodium azide.

Storage

Store at -20 °C for one year.

Recommended Dilutions

Western Blotting (WB): 1:400-1:2,000

Note: This product is for research use only.

Validation Data

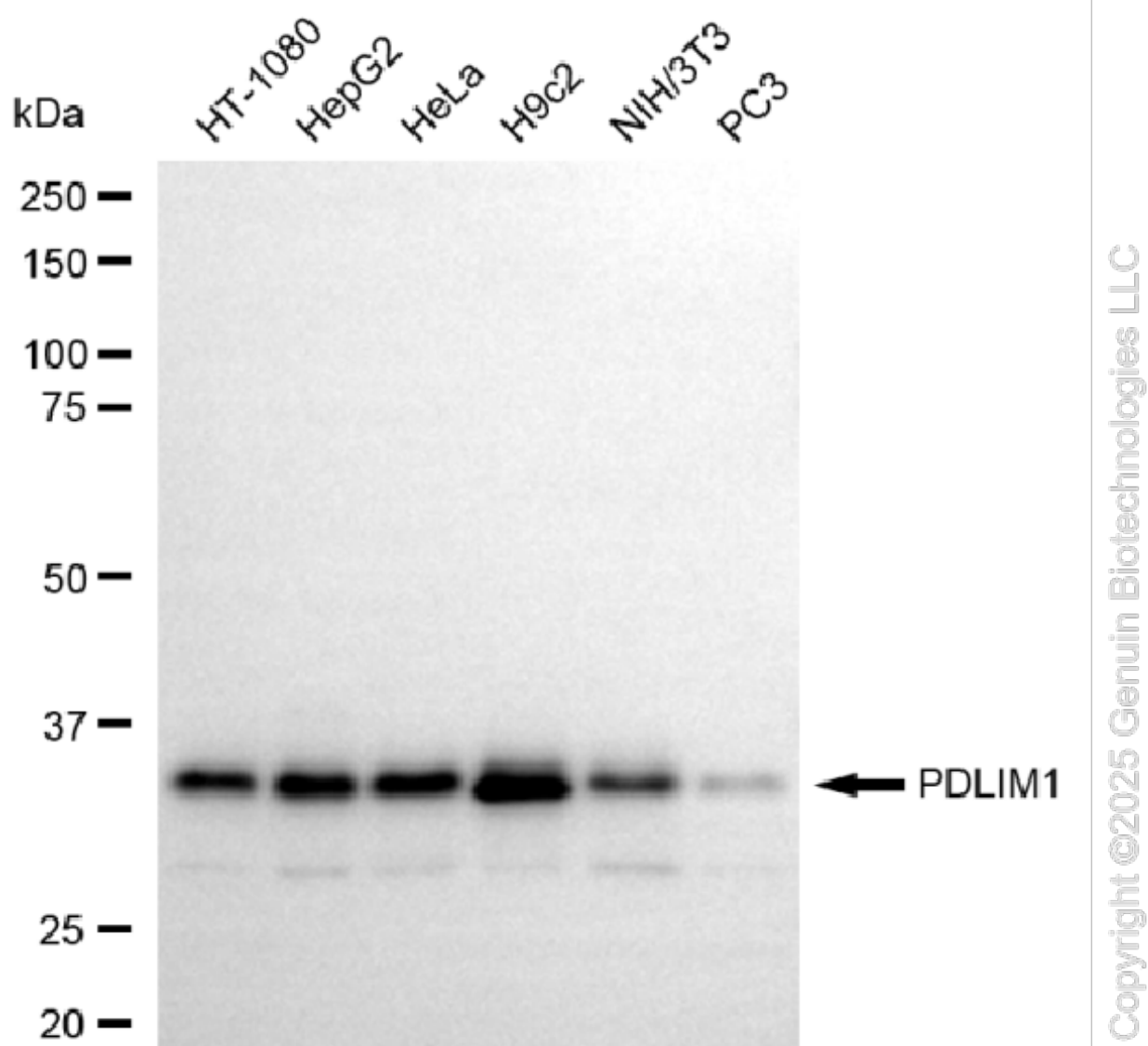
SUPPORT

SUPPORT@GENUINBIOTECH.COM
TEL: +1-540-855-7041

ORDERS

SALES@GENUINBIOTECH.COM
FAX: +1-540-855-7041

WWW.GENUINBIOTECH.COM



Western blotting analysis using anti-PDLIM1 antibody (Cat#5741). Total cell lysates (30 μ g) from various cell lines were loaded and separated by SDS-PAGE. The blot was incubated with anti-PDLIM1 antibody (Cat#5741, 1:2,000) and HRP-conjugated goat anti-rabbit secondary antibody (Cat#201, 1:20,000) respectively. Image was developed using NaQ™ ECL Substrate Kit (Cat#716).

SUPPORT

SUPPORT@GENUINBIOTECH.COM
TEL: +1-540-855-7041

ORDERS

SALES@GENUINBIOTECH.COM
FAX: +1-540-855-7041

WWW.GENUINBIOTECH.COM