

Catalog #: 5743

Aliases

PARK7; Parkinsonism Associated Deglycase; DJ-1; GATD2; DJ1; Parkinson Disease (Autosomal Recessive, Early Onset) 7; Protein/Nucleic Acid Deglycase DJ-1; Parkinson Disease Protein 7; Parkinson Protein 7; Maillard Deglycase; Oncogene DJ1; Protein DJ-1; Epididymis Secretory Sperm Binding Protein Li 67p; Parkinsonism-Associated Deglycase; Protein Deglycase DJ-1; EC 3.5.1.124; EC 3.1.2.-; EC 3.5.1.-; HEL-S-67p

Background

Gene Name: PARK7

NCBI Gene Entry: [11315](#)

UniProt Entry: [Q99497](#)

Application Information

Molecular Weight: Predicted, 20 kDa; observed, 22 kDa

Clonality: Rabbit polyclonal antibody

Species Reactivity: Human, rat

Applications Tested: Western blotting (WB)

Immunogen

A synthesized peptide derived from human DJ-1

Isotype

Rabbit IgG

Storage Buffer

Supplied in PBS (pH 7.4) containing 50% glycerol, and 0.02% sodium azide.

Storage

Store at -20 °C for one year.

Recommended Dilutions

Western Blotting (WB): 1:200-1:1,000

Note: This product is for research use only.

Validation Data

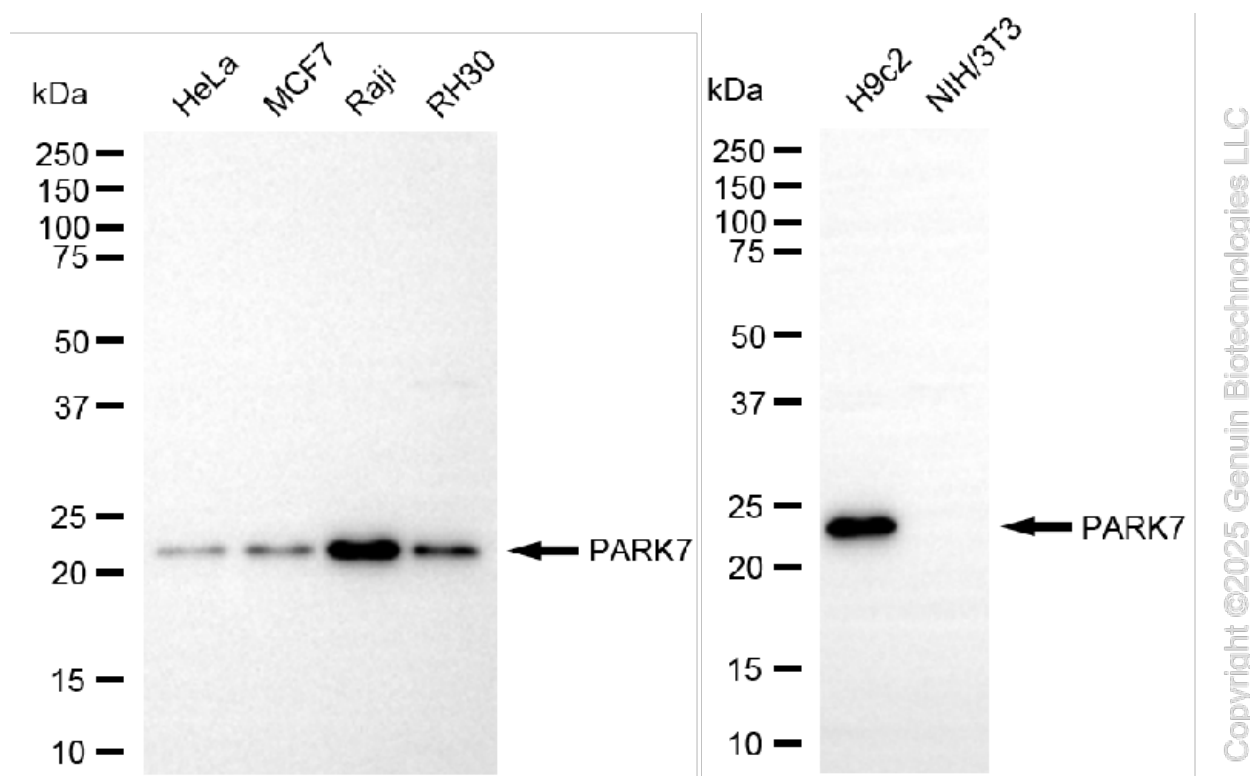
SUPPORT

SUPPORT@GENUINBIOTECH.COM
TEL: +1-540-855-7041

ORDERS

SALES@GENUINBIOTECH.COM
FAX: +1-540-855-7041

WWW.GENUINBIOTECH.COM



Western blotting analysis using anti-PARK7 antibody (Cat#5743). Total cell lysates (30 µg) from various cell lines were loaded and separated by SDS-PAGE. The blot was incubated with anti-PARK7 antibody (Cat#5743, 1:1,000) and HRP-conjugated goat anti-rabbit secondary antibody (Cat#201, 1:20,000) respectively. Image was developed using FeQ™ ECL Substrate Kit (Cat#226).

SUPPORT

SUPPORT@GENUINBIOTECH.COM
TEL: +1-540-855-7041

ORDERS

SALES@GENUINBIOTECH.COM
FAX: +1-540-855-7041

WWW.GENUINBIOTECH.COM