

## Catalog #: 5744

### Aliases

UBE2T; Ubiquitin Conjugating Enzyme E2 T; HSPC150; FANCT; Cell Proliferation-Inducing Gene 50 Protein; Ubiquitin-Conjugating Enzyme E2 T; E2 Ubiquitin-Conjugating Enzyme T; Ubiquitin Carrier Protein T; Ubiquitin-Protein Ligase T; HSPC150 Protein Similar To Ubiquitin-Conjugating Enzyme; Ubiquitin-Conjugating Enzyme E2T (Putative); Ubiquitin-Conjugating Enzyme E2T; Ubiquitin Conjugating Enzyme E2T; EC 2.3.2.23; PIG50

### Background

Gene Name: UBE2T

NCBI Gene Entry: [29089](#)

UniProt Entry: [Q9NPD8](#)

### Application Information

Molecular Weight: Predicted, 23 kDa; observed, 21 kDa

Clonality: Rabbit polyclonal antibody

Species Reactivity: Human

Applications Tested: Western blotting (WB)

### Immunogen

A synthesized peptide derived from human UBE2T

### Isotype

Rabbit IgG

### Storage Buffer

Supplied in PBS (pH 7.4) containing 50% glycerol, and 0.02% sodium azide.

### Storage

Store at -20 °C for one year.

### Recommended Dilutions

Western Blotting (WB): 1:400-1:2,000

**Note:** This product is for research use only.

### Validation Data

---

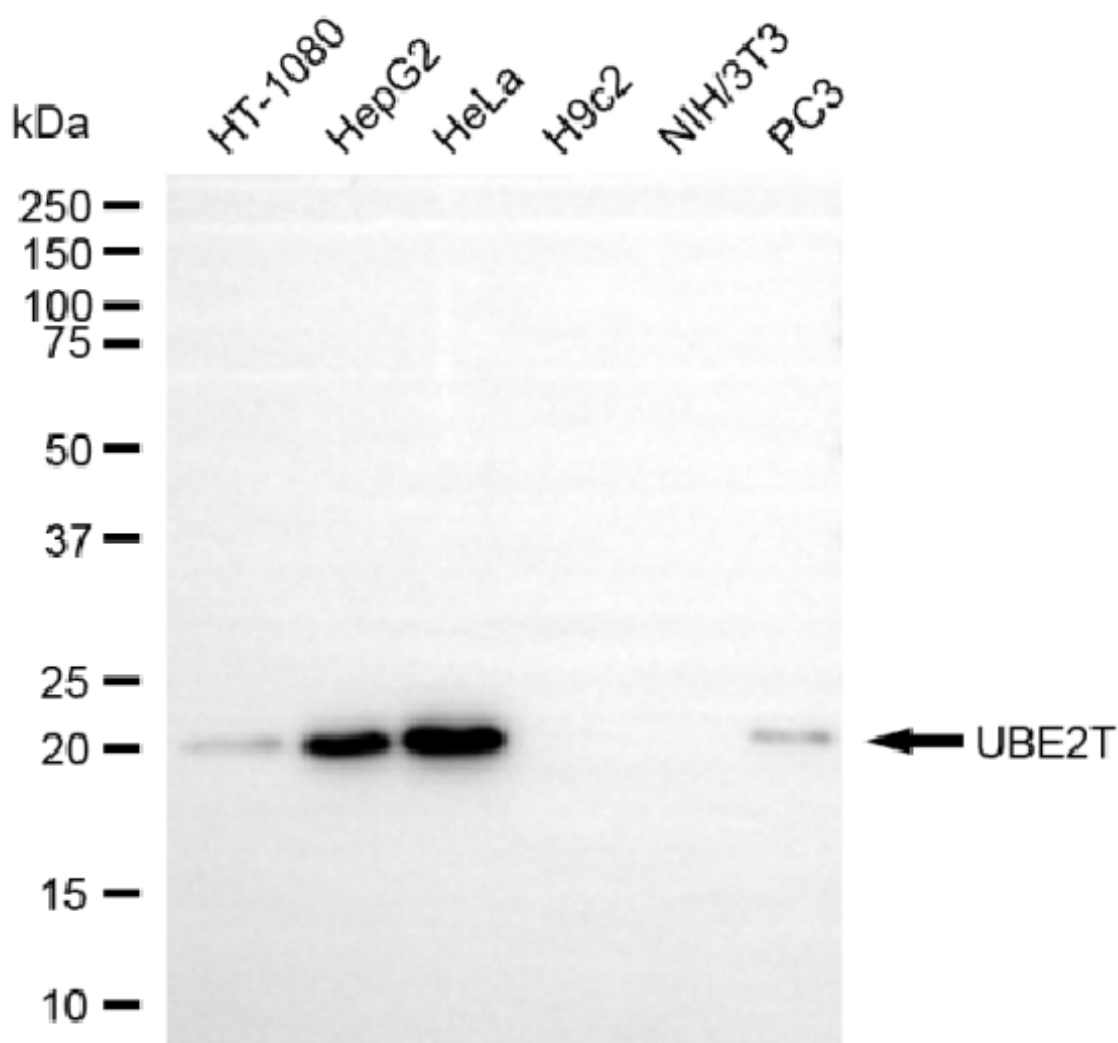
#### SUPPORT

SUPPORT@GENUINBIOTECH.COM  
TEL: +1-540-855-7041

#### ORDERS

SALES@GENUINBIOTECH.COM  
FAX: +1-540-855-7041

[WWW.GENUINBIOTECH.COM](http://WWW.GENUINBIOTECH.COM)



Copyright ©2025 Genuin Biotechnologies LLC

Western blotting analysis using anti-UBE2T antibody (Cat#5744). Total cell lysates (30  $\mu$ g) from various cell lines were loaded and separated by SDS-PAGE. The blot was incubated with anti-UBE2T antibody (Cat#5744, 1:2,000) and HRP-conjugated goat anti-rabbit secondary antibody (Cat#201, 1:20,000) respectively. Image was developed using NaQ™ ECL Substrate Kit (Cat#716).

**SUPPORT**

SUPPORT@GENUINBIOTECH.COM  
TEL: +1-540-855-7041

**ORDERS**

SALES@GENUINBIOTECH.COM  
FAX: +1-540-855-7041

[WWW.GENUINBIOTECH.COM](http://WWW.GENUINBIOTECH.COM)