

Catalog #: 5745

Aliases

PLSCR1; Phospholipid Scramblase 1; MMTRA1B; Ca(2+)-Dependent Phospholipid Scramblase 1; Erythrocyte Phospholipid Scramblase; Mg(2+)-Dependent Nuclease; PL Scramblase 1; EC 3.1.-.- ; MmTRA1b

Background

Gene Name: PLSCR1

NCBI Gene Entry: [5359](#)

UniProt Entry: [O15162](#)

Application Information

Molecular Weight: Predicted, 35 kDa; observed, 31 kDa

Clonality: Rabbit polyclonal antibody

Species Reactivity: Human

Applications Tested: Western blotting (WB)

Immunogen

A synthesized peptide derived from human PLSCR1

Isotype

Rabbit IgG

Storage Buffer

Supplied in PBS (pH 7.4) containing 50% glycerol, and 0.02% sodium azide.

Storage

Store at -20 °C for one year.

Recommended Dilutions

Western Blotting (WB): 1:400-1:2,000

Note: This product is for research use only.

Validation Data

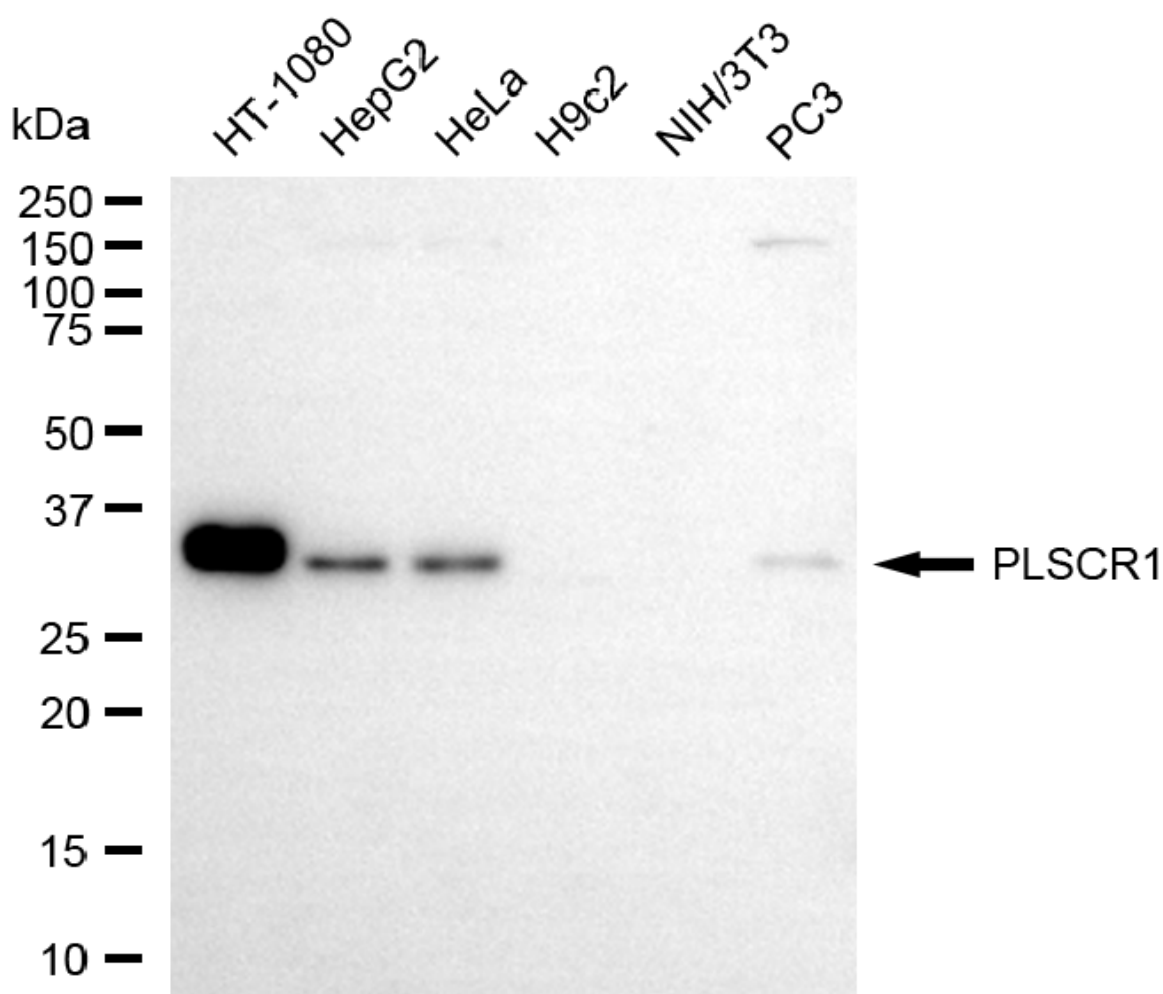
SUPPORT

SUPPORT@GENUINBIOTECH.COM
TEL: +1-540-855-7041

ORDERS

SALES@GENUINBIOTECH.COM
FAX: +1-540-855-7041

WWW.GENUINBIOTECH.COM



Copyright ©2025 Genuin Biotechnologies LLC

Western blotting analysis using anti-PLSCR1 antibody (Cat#5745). Total cell lysates (30 µg) from various cell lines were loaded and separated by SDS-PAGE. The blot was incubated with anti-PLSCR1 antibody (Cat#5745, 1:2,000) and HRP-conjugated goat anti-rabbit secondary antibody (Cat#201, 1:20,000) respectively. Image was developed using FeQ™ ECL Substrate Kit (Cat#226).

SUPPORT

SUPPORT@GENUINBIOTECH.COM
TEL: +1-540-855-7041

ORDERS

SALES@GENUINBIOTECH.COM
FAX: +1-540-855-7041

WWW.GENUINBIOTECH.COM