

Catalog #: 5746

Aliases

ACTL6A; Actin Like 6A; BAF53A; INO80K; BRG1-Associated Factor 53A; INO80 Complex Subunit K; SMARCN1; Actl6; Arp4; 53 KDa BRG1-Associated Factor A; Actin-Related Protein Baf53a; BAF Complex 53 KDa Subunit; Actin-Related Protein 4; Actin-Like Protein 6A; ArpNbeta; BAF53; HArpN Beta; ARPN-BETA

Background

Gene Name: ACTL6A

NCBI Gene Entry: [86](#)

UniProt Entry: [O96019](#)

Application Information

Molecular Weight: Predicted, 47 kDa; observed, 47 kDa

Clonality: Rabbit polyclonal antibody

Species Reactivity: Human, mouse, rat

Applications Tested: Western blotting (WB)

Immunogen

A synthesized peptide derived from human BAF53A

Isotype

Rabbit IgG

Storage Buffer

Supplied in PBS (pH 7.4) containing 50% glycerol, and 0.02% sodium azide.

Storage

Store at -20 °C for one year.

Recommended Dilutions

Western Blotting (WB): 1:400-1:2,000

Note: This product is for research use only.

Validation Data

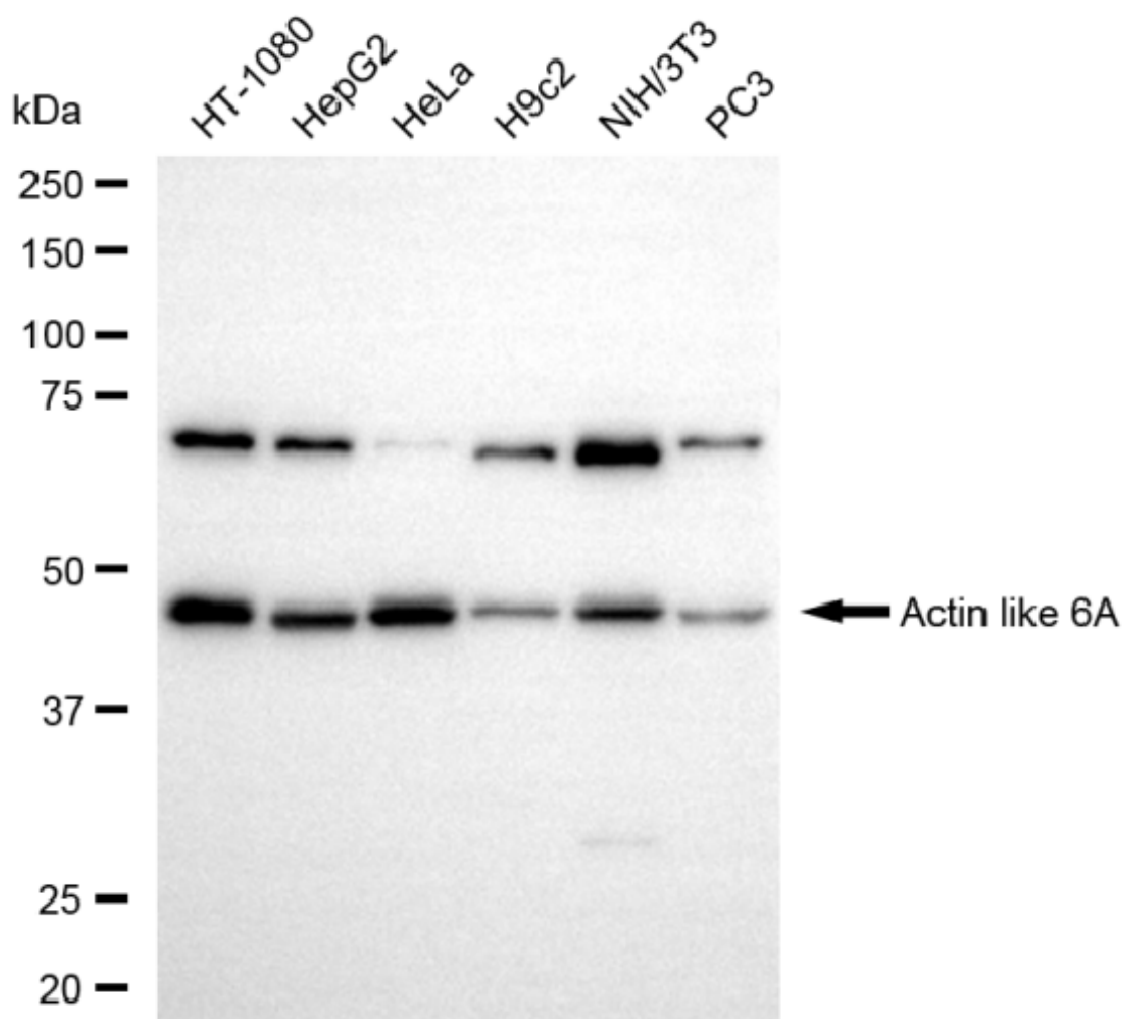
SUPPORT

SUPPORT@GENUINBIOTECH.COM
TEL: +1-540-855-7041

ORDERS

SALES@GENUINBIOTECH.COM
FAX: +1-540-855-7041

WWW.GENUINBIOTECH.COM



Copyright ©2025 Genuin Biotechnologies LLC

Western blotting analysis using anti-actin like 6A antibody (Cat#5746). Total cell lysates (30 μ g) from various cell lines were loaded and separated by SDS-PAGE. The blot was incubated with anti-actin like 6A antibody (Cat#5746, 1:2,000) and HRP-conjugated goat anti-rabbit secondary antibody (Cat#201, 1:20,000) respectively. Image was developed using NaQ™ ECL Substrate Kit (Cat#716).

SUPPORT

SUPPORT@GENUINBIOTECH.COM
TEL: +1-540-855-7041

ORDERS

SALES@GENUINBIOTECH.COM
FAX: +1-540-855-7041

WWW.GENUINBIOTECH.COM