

Catalog #: 5752

Aliases

RAD17; RAD17 Checkpoint Clamp Loader Component; RAD17Sp; Rad24; CCYC; Cell Cycle Checkpoint Protein RAD17; R24L; Cell Cycle Checkpoint Protein (RAD17); RAD17 Homolog (S. Pombe); RF-C Activator 1 Homolog; RF-C/Activator 1 Homolog; RAD1 (S. Pombe) Homolog; Rad17-Like Protein; RAD17 Homolog; RAD1 Homolog; HRAD17; HRad17

Background

Gene Name: RAD17

NCBI Gene Entry: [5884](#)

UniProt Entry: [O75943](#)

Application Information

Molecular Weight: Predicted, 77 kDa; observed, 74 kDa

Clonality: Rabbit polyclonal antibody

Species Reactivity: Human, mouse

Applications Tested: Western blotting (WB)

Immunogen

A synthesized peptide derived from human RAD17

Isotype

Rabbit IgG

Storage Buffer

Supplied in PBS (pH 7.4) containing 50% glycerol, and 0.02% sodium azide.

Storage

Store at -20 °C for one year.

Recommended Dilutions

Western Blotting (WB): 1:500-1:2,500

Note: This product is for research use only.

Validation Data

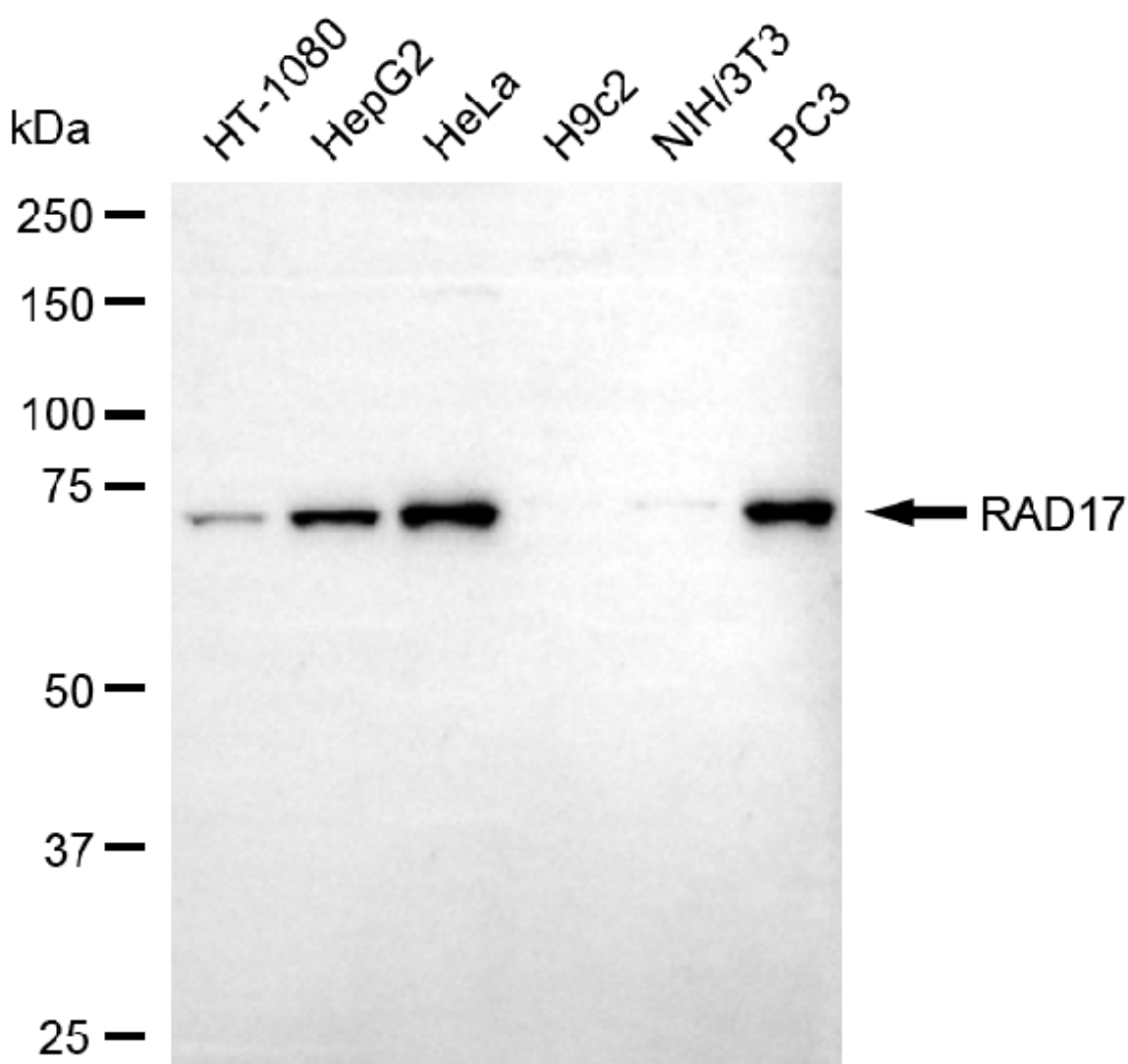
SUPPORT

SUPPORT@GENUINBIOTECH.COM
TEL: +1-540-855-7041

ORDERS

SALES@GENUINBIOTECH.COM
FAX: +1-540-855-7041

WWW.GENUINBIOTECH.COM



Copyright ©2025 Genuin Biotechnologies LLC

Western blotting analysis using anti-RAD17 antibody (Cat#5752). Total cell lysates (30 µg) from various cell lines were loaded and separated by SDS-PAGE. The blot was incubated with anti-RAD17 antibody (Cat#5752, 1:2,500) and HRP-conjugated goat anti-rabbit secondary antibody (Cat#201, 1:20,000) respectively. Image was developed using FeQ™ ECL Substrate Kit (Cat#226).

SUPPORT

SUPPORT@GENUINBIOTECH.COM
TEL: +1-540-855-7041

ORDERS

SALES@GENUINBIOTECH.COM
FAX: +1-540-855-7041

WWW.GENUINBIOTECH.COM