

## Catalog #: 5757

## Aliases

ABCF2; ATP Binding Cassette Subfamily F Member 2; EST133090; HUSSY-18; ABC28; ATP-Binding Cassette, Sub-Family F (GCN20), Member 2; ATP-Binding Cassette Sub-Family F Member 2; Iron-Inhibited ABC Transporter 2; M-ABC1; ABC-Type Transport Protein; EC 3.6.3.17; EC 3.6.3; HUSSY18

## Background

Gene Name: ABCF2

NCBI Gene Entry: [10061](#)

UniProt Entry: [Q9UG63](#)

## Application Information

Molecular Weight: Predicted, 71 kDa; observed, 71 kDa

Clonality: Mouse monoclonal antibody

Clone ID: 25GB5235

Species Reactivity: Human, mouse, rat

Applications Tested: Western blotting (WB)

## Immunogen

Recombinant protein of human ABCF2

## Isotype

Mouse IgG1

## Storage Buffer

Supplied in PBS (pH 7.4) containing 50% glycerol, and 0.02% sodium azide.

## Storage

Store at -20 °C for one year.

## Recommended Dilutions

Western Blotting (WB): 1:500-1:2,500

**Note:** This product is for research use only.

## Validation Data

---

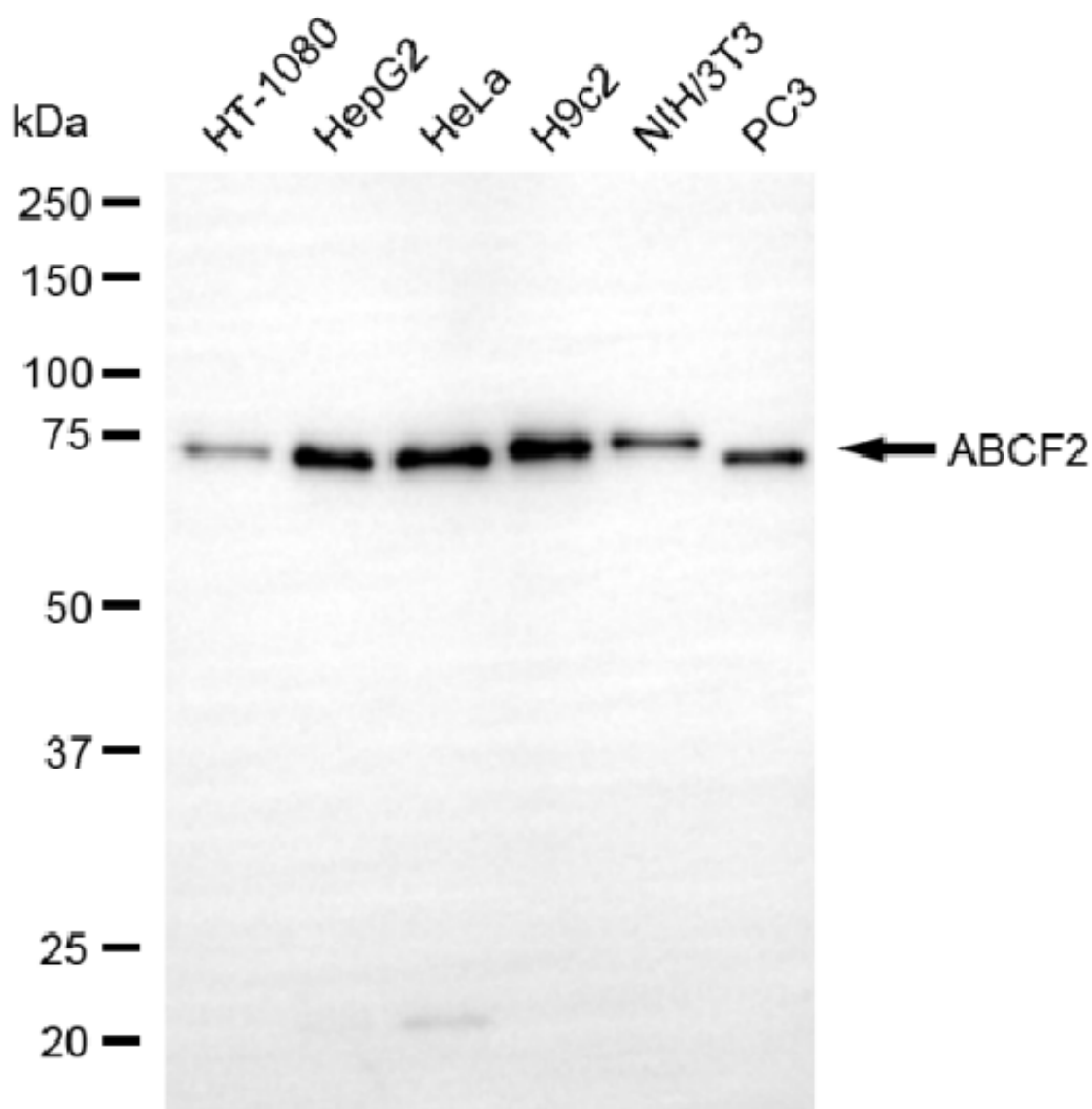
### SUPPORT

SUPPORT@GENUINBIOTECH.COM  
TEL: +1-540-855-7041

### ORDERS

SALES@GENUINBIOTECH.COM  
FAX: +1-540-855-7041

[WWW.GENUINBIOTECH.COM](http://WWW.GENUINBIOTECH.COM)



Western blotting analysis using anti-ABCF2 antibody (Cat#5757). Total cell lysates (30  $\mu$ g) from various cell lines were loaded and separated by SDS-PAGE. The blot was incubated with anti-ABCF2 antibody (Cat#5757, 1:2,500) and HRP-conjugated goat anti-mouse secondary antibody (Cat#101, 1:20,000) respectively. Image was developed using FeQ™ ECL Substrate Kit (Cat#226).

**SUPPORT**

SUPPORT@GENUINBIOTECH.COM  
TEL: +1-540-855-7041

**ORDERS**

SALES@GENUINBIOTECH.COM  
FAX: +1-540-855-7041

[WWW.GENUINBIOTECH.COM](http://WWW.GENUINBIOTECH.COM)