

Anti-GTP Cyclohydrolase 1 Mouse Monoclonal antibody



Catalog #: 5762

Aliases

GCH1; GTP Cyclohydrolase 1; GTP Cyclohydrolase I; GTPCH1; DYT5a; DYT5; GCH; Dystonia 14; EC 3.5.4.16; GTP-CH-I; DYT14; Guanosine 5'-Triphosphate Cyclohydrolase I; Dopa-Responsive Dystonia; GTP-CH-1; HPABH4B

Background

Gene Name: GCH1

NCBI Gene Entry: [2643](#)

UniProt Entry: [P30793](#)

Application Information

Molecular Weight: Predicted, 28 kDa; observed, 30 kDa

Clonality: Mouse monoclonal antibody

Clone ID: 25GB5260

Species Reactivity: Human

Applications Tested: Western blotting (WB)

Immunogen

Recombinant protein of human GCH1

Isotype

Mouse IgG2a

Storage Buffer

Supplied in PBS (pH 7.4) containing 50% glycerol, and 0.02% sodium azide.

Storage

Store at -20 °C for one year.

Recommended Dilutions

Western Blotting (WB): 1:500-1:2,500

Note: This product is for research use only.

Validation Data

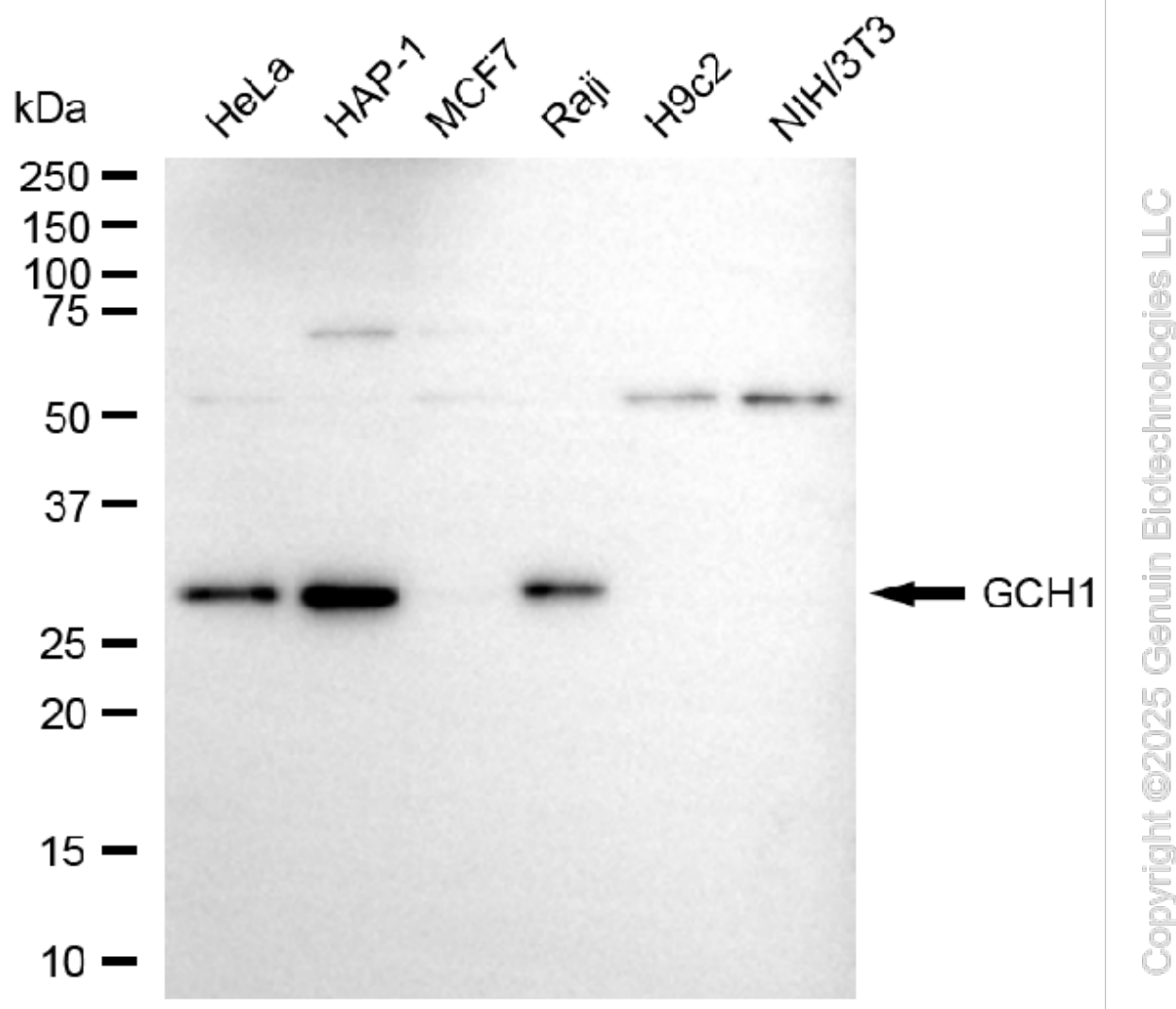
SUPPORT

SUPPORT@GENUINBIOTECH.COM
TEL: +1-540-855-7041

ORDERS

SALES@GENUINBIOTECH.COM
FAX: +1-540-855-7041

WWW.GENUINBIOTECH.COM



Western blotting analysis using anti-GCH1 antibody (Cat#5762). Total cell lysates (30 µg) from various cell lines were loaded and separated by SDS-PAGE. The blot was incubated with anti-GCH1 antibody (Cat#5762, 1:2,500) and HRP-conjugated goat anti-mouse secondary antibody (Cat#101, 1:20,000) respectively. Image was developed using FeQ™ ECL Substrate Kit (Cat#226).