

Catalog #: 5765

Aliases

PSMA6; Proteasome 20S Subunit Alpha 6; PROS27; P27K; IOTA; Proteasome (Prosome, Macropain) Subunit, Alpha Type, 6; Multicatalytic Endopeptidase Complex Iota Chain; Proteasome Subunit Alpha Type-6; Proteasome Subunit Alpha 6; 27 KDa Prosomal Protein; Proteasome Iota Chain; Macropain Iota Chain; MGC22756; MGC23846; MGC2333; PROS-27; Testicular Secretory Protein Li 44; Proteasome Subunit Alpha1; Proteasome Subunit Iota; Macropain Subunit Iota; Proteasome Subunit A1; Prosomal P27K Protein; EC 3.4.25.1

Background

Gene Name: PSMA6

NCBI Gene Entry: [5687](#)

UniProt Entry: [P60900](#)

Application Information

Molecular Weight: Predicted, 27 kDa; observed, 27 kDa

Clonality: Mouse monoclonal antibody

Clone ID: 25GB5275

Species Reactivity: Human, mouse, rat

Applications Tested: Western blotting (WB)

Immunogen

Recombinant protein of human PSMA6

Isotype

Mouse IgG1

Storage Buffer

Supplied in PBS (pH 7.4) containing 50% glycerol, and 0.02% sodium azide.

Storage

Store at -20 °C for one year.

Recommended Dilutions

Western Blotting (WB): 1:1,000-1:5,000

SUPPORT

SUPPORT@GENUINBIOTECH.COM
TEL: +1-540-855-7041

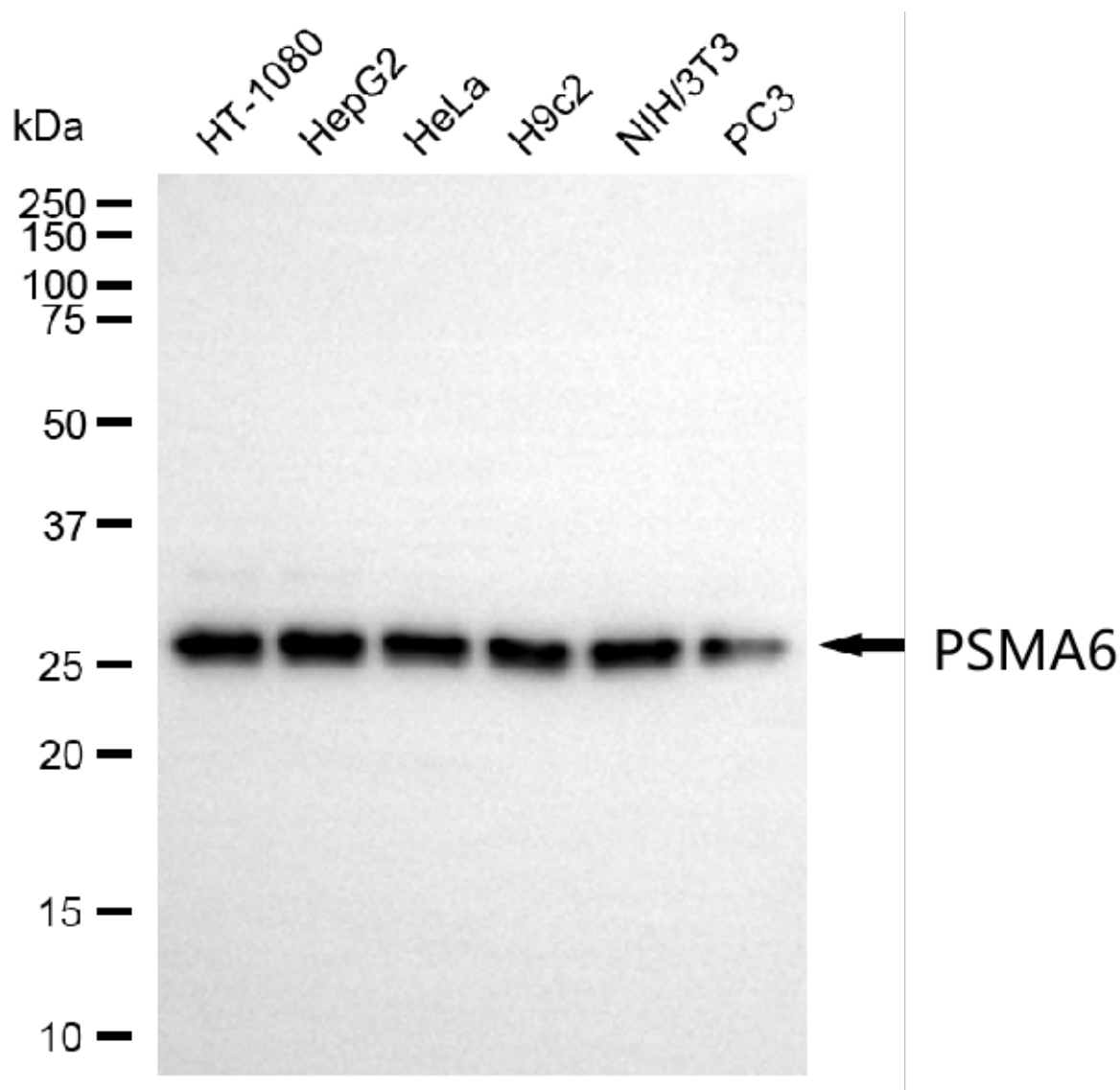
ORDERS

SALES@GENUINBIOTECH.COM
FAX: +1-540-855-7041

WWW.GENUINBIOTECH.COM

Note: This product is for research use only.

Validation Data



Copyright ©2025 Genuin Biotechnologies LLC

Western blotting analysis using anti-PSMA6 antibody (Cat#5765). Total cell lysates (30 µg) from various cell lines were loaded and separated by SDS-PAGE. The blot was incubated with anti-PSMA6 antibody (Cat#5765, 1:5,000) and HRP-conjugated goat anti-mouse secondary antibody (Cat#101, 1:20,000) respectively. Image was developed using NaQ™ ECL Substrate Kit (Cat#716).

SUPPORT

SUPPORT@GENUINBIOTECH.COM
TEL: +1-540-855-7041

ORDERS

SALES@GENUINBIOTECH.COM
FAX: +1-540-855-7041

WWW.GENUINBIOTECH.COM