

## Catalog #: 5769

## Aliases

PPP4C; Protein Phosphatase 4 Catalytic Subunit; PPX; PP4; Serine/Threonine-Protein Phosphatase 4 Catalytic Subunit; Protein Phosphatase 4 (Formerly X), Catalytic Subunit; Protein Phosphatase X, Catalytic Subunit; EC 3.1.3.16; PP-X; PP4C; PPP4; Epididymis Secretory Sperm Binding Protein; Protein Phosphatase 4, Catalytic Subunit; Protein Phosphatase X; PPH3; Pp4

## Background

Gene Name: PPP4C

NCBI Gene Entry: [5531](#)

UniProt Entry: [P60510](#)

## Application Information

Molecular Weight: Predicted, 35 kDa; observed, 32 kDa

Clonality: Mouse monoclonal antibody

Clone ID: 25GB5295

Species Reactivity: Human, mouse, rat

Applications Tested: Western blotting (WB)

## Immunogen

Recombinant protein of human PPP4C

## Isotype

Mouse IgG2b

## Storage Buffer

Supplied in PBS (pH 7.4) containing 50% glycerol, and 0.02% sodium azide.

## Storage

Store at -20 °C for one year.

## Recommended Dilutions

Western Blotting (WB): 1:500-1:2,500

**Note:** This product is for research use only.

## Validation Data

---

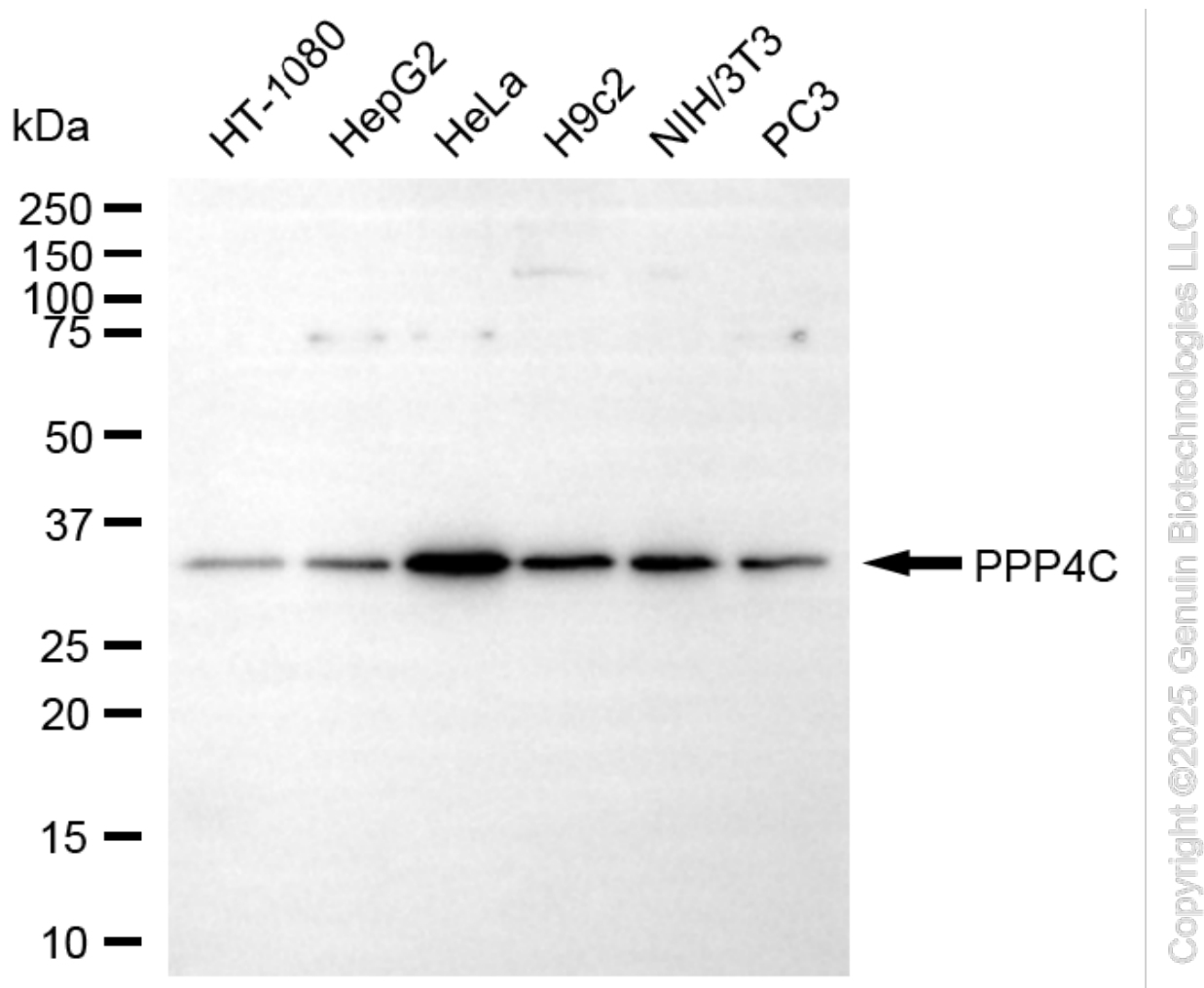
### SUPPORT

SUPPORT@GENUINBIOTECH.COM  
TEL: +1-540-855-7041

### ORDERS

SALES@GENUINBIOTECH.COM  
FAX: +1-540-855-7041

[WWW.GENUINBIOTECH.COM](http://WWW.GENUINBIOTECH.COM)



Western blotting analysis using anti-PPP4C antibody (Cat#5769). Total cell lysates (30  $\mu$ g) from various cell lines were loaded and separated by SDS-PAGE. The blot was incubated with anti-PPP4C antibody (Cat#5769, 1:2,500) and HRP-conjugated goat anti-mouse secondary antibody (Cat#101, 1:20,000) respectively. Image was developed using FeQ™ ECL Substrate Kit (Cat#226).

**SUPPORT**

SUPPORT@GENUINBIOTECH.COM  
TEL: +1-540-855-7041

**ORDERS**

SALES@GENUINBIOTECH.COM  
FAX: +1-540-855-7041

[WWW.GENUINBIOTECH.COM](http://WWW.GENUINBIOTECH.COM)