

## Catalog #: 5771

### Aliases

SORL1; Sortilin Related Receptor 1; SorLA-1; SorLA; LR11; LDLR Relative With 11 Ligand-Binding Repeats; C11orf32; Gp250; LRP9; Low-Density Lipoprotein Receptor Relative With 11 Ligand-Binding Repeats; Sorting Protein-Related Receptor Containing LDLR Class A Repeats; Sortilin-Related Receptor; Sortilin-Related Receptor, L(DLR Class) A Repeats-Containing; Sortilin-Related Receptor, L(DLR Class) A Repeats Containing; Chromosome 11 Open Reading Frame 32; Mosaic Protein LR11

### Background

Gene Name: SORL1

NCBI Gene Entry: [6653](#)

UniProt Entry: [Q92673](#)

### Application Information

Molecular Weight: Predicted, 248 kDa; observed, 300-350 kDa

Clonality: Mouse monoclonal antibody

Clone ID: 25GB5305

Species Reactivity: Human

Applications Tested: Western blotting (WB)

### Immunogen

Recombinant protein of human SORL1

### Isotype

Mouse IgG2b

### Storage Buffer

Supplied in PBS (pH 7.4) containing 50% glycerol, and 0.02% sodium azide.

### Storage

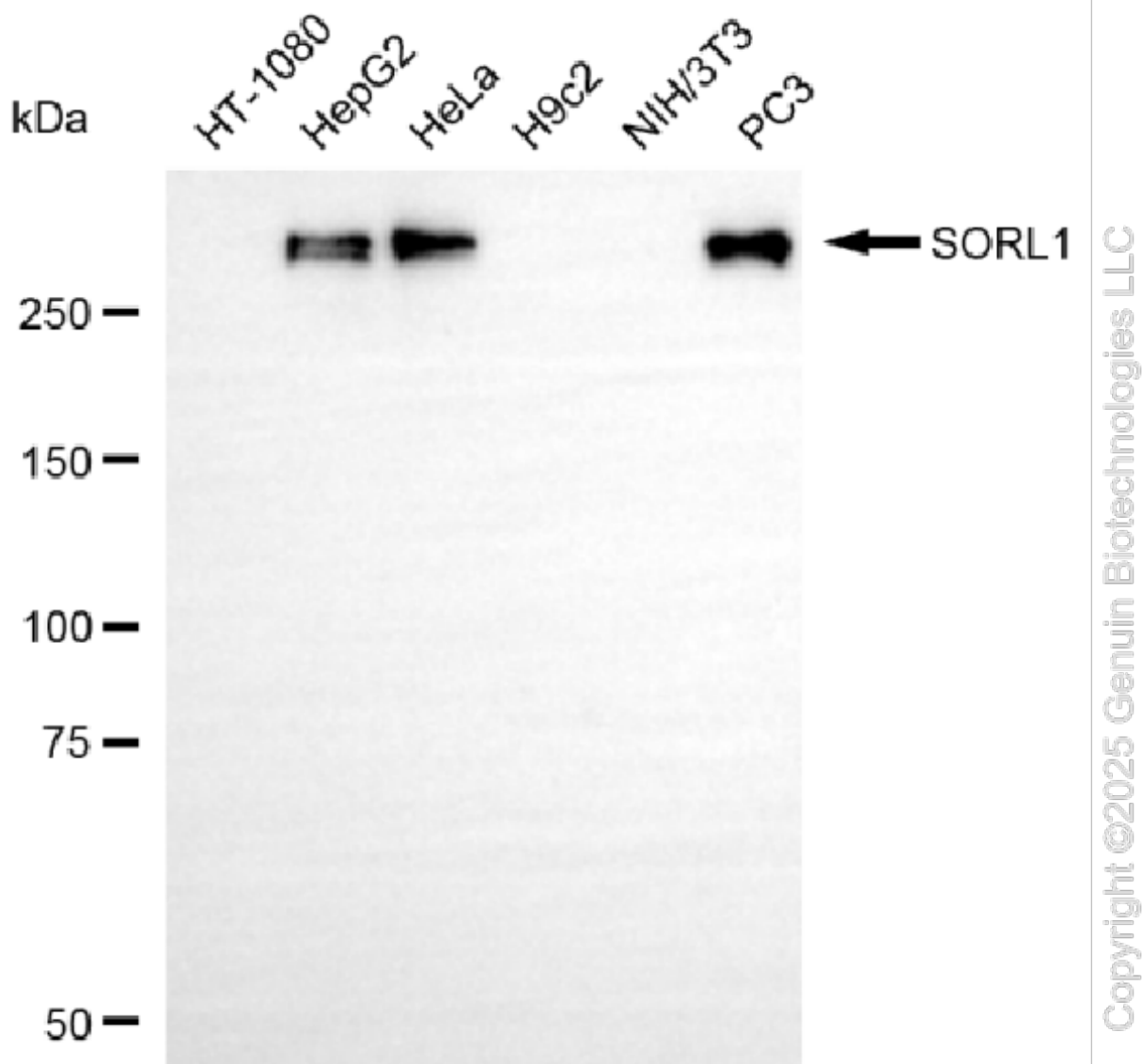
Store at -20 °C for one year.

### Recommended Dilutions

Western Blotting (WB): 1:500-1:2,500

**Note:** This product is for research use only.

### Validation Data



Western blotting analysis using anti-SORL1 antibody (Cat#5771). Total cell lysates (30 µg) from various cell lines were loaded and separated by SDS-PAGE. The blot was incubated with anti-SORL1 antibody (Cat#5771, 1:2,500) and HRP-conjugated goat anti-mouse secondary antibody (Cat#101, 1:20,000) respectively. Image was developed using NaQ™ ECL Substrate Kit (Cat#716).

#### SUPPORT

SUPPORT@GENUINBIOTECH.COM  
TEL: +1-540-855-7041

#### ORDERS

SALES@GENUINBIOTECH.COM  
FAX: +1-540-855-7041

[WWW.GENUINBIOTECH.COM](http://WWW.GENUINBIOTECH.COM)