

## Catalog #: 5792

### Aliases

SH3GL1; SH3 Domain Containing GRB2 Like 1, Endophilin A2; SH3D2B; CNSA1; EEN; SH3P8; Extra Eleven-Nineteen Leukemia Fusion Gene Protein; SH3 Domain-Containing GRB2-Like Protein 1; SH3-Containing Grb-2-Like 1 Protein; Extra 11-19 Leukemia Fusion; EEN Fusion Partner Of MLL; SH3-Domain GRB2-Like 1; SH3 Domain Protein 2B; Endophilin-A2; Endophilin-2; MGC111371; SH3 Domain Containing GRB2 Like 1; SH3-Containing Protein EEN; SH3 Domain GRB2-Like 1; Fusion Partner Of MLL; Endophilin A2

### Background

Gene Name: SH3GL1

NCBI Gene Entry: [6455](#)

UniProt Entry: [Q99961](#)

### Application Information

Molecular Weight: Predicted, 41 kDa; observed, 45 kDa

Clonality: Mouse monoclonal antibody

Clone ID: 25GB5415

Species Reactivity: Human

Applications Tested: Western blotting (WB)

### Immunogen

Recombinant protein of human SH3GL1

### Isotype

Mouse IgG1

### Storage Buffer

Supplied in PBS (pH 7.4) containing 50% glycerol, and 0.02% sodium azide.

### Storage

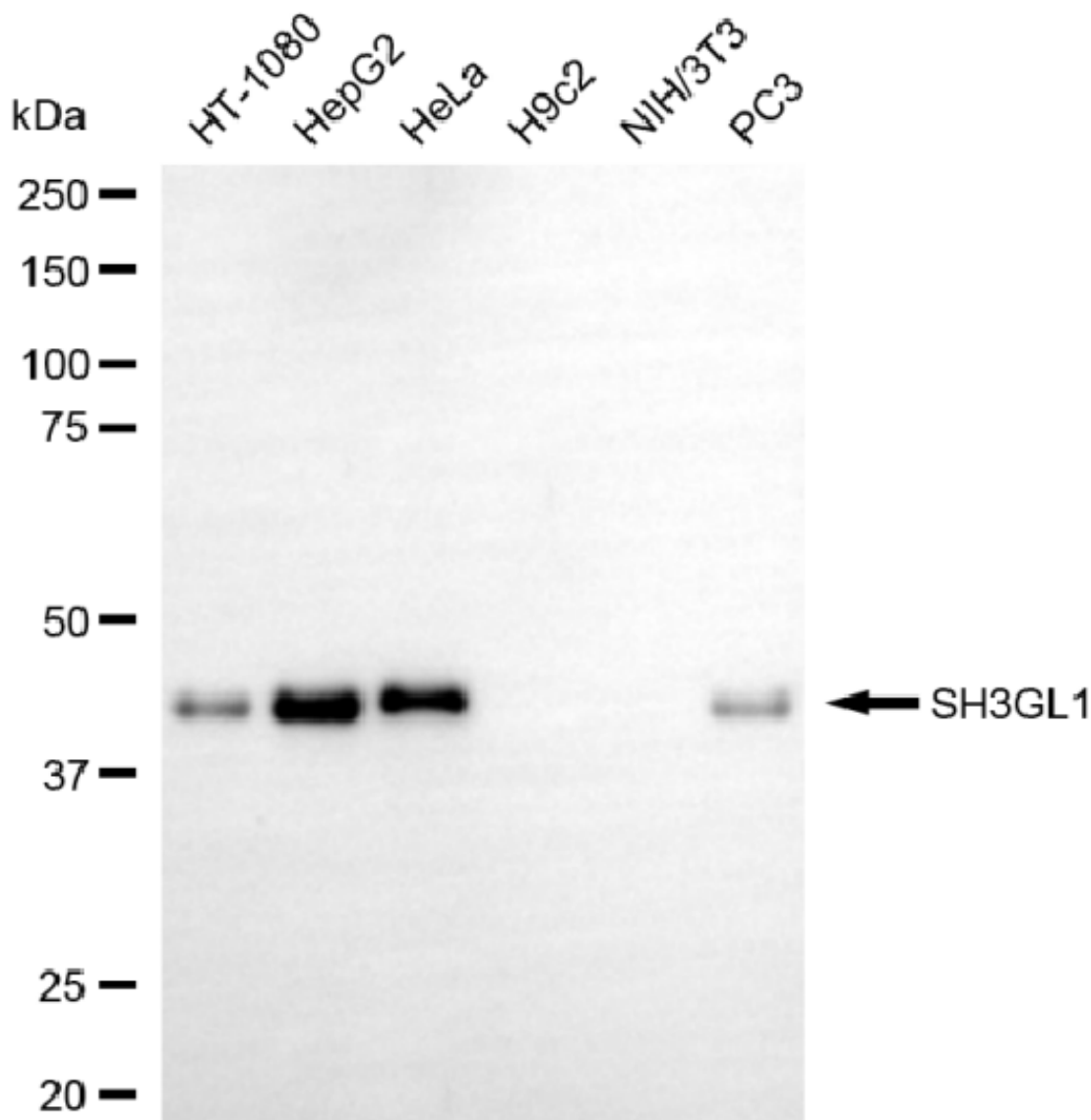
Store at -20 °C for one year.

### Recommended Dilutions

Western Blotting (WB): 1:500-1:2,500

**Note:** This product is for research use only.

## Validation Data



Copyright ©2025 Genuin Biotechnologies LLC

Western blotting analysis using anti-SH3GL1 antibody (Cat#5792). Total cell lysates (30 µg) from various cell lines were loaded and separated by SDS-PAGE. The blot was incubated with anti-SH3GL1 antibody (Cat#5792, 1:2,500) and HRP-conjugated goat anti-mouse secondary antibody (Cat#101, 1:20,000) respectively. Image was developed using FeQ™ ECL Substrate Kit (Cat#226).

### SUPPORT

SUPPORT@GENUINBIOTECH.COM  
TEL: +1-540-855-7041

### ORDERS

SALES@GENUINBIOTECH.COM  
FAX: +1-540-855-7041

WWW.GENUINBIOTECH.COM