

Catalog #: 5799

Aliases

REEP2; Receptor Accessory Protein 2; SGC32445; C5orf19; SPG72; Yip2d; Receptor Expression-Enhancing Protein 2; Chromosome 5 Open Reading Frame 19; SPG72A; SPG72B

Background

Gene Name: REEP2

NCBI Gene Entry: [51308](#)

UniProt Entry: [Q9BRK0](#)

Application Information

Molecular Weight: Predicted, 28 kDa; observed, 28 kDa

Clonality: Mouse monoclonal antibody

Clone ID: 25GB5450

Species Reactivity: Human

Applications Tested: Western blotting (WB)

Immunogen

Recombinant protein of human REEP2

Isotype

Mouse IgG2a

Storage Buffer

Supplied in PBS (pH 7.4) containing 50% glycerol, and 0.02% sodium azide.

Storage

Store at -20 °C for one year.

Recommended Dilutions

Western Blotting (WB): 1:500-1:2,500

Note: This product is for research use only.

Validation Data

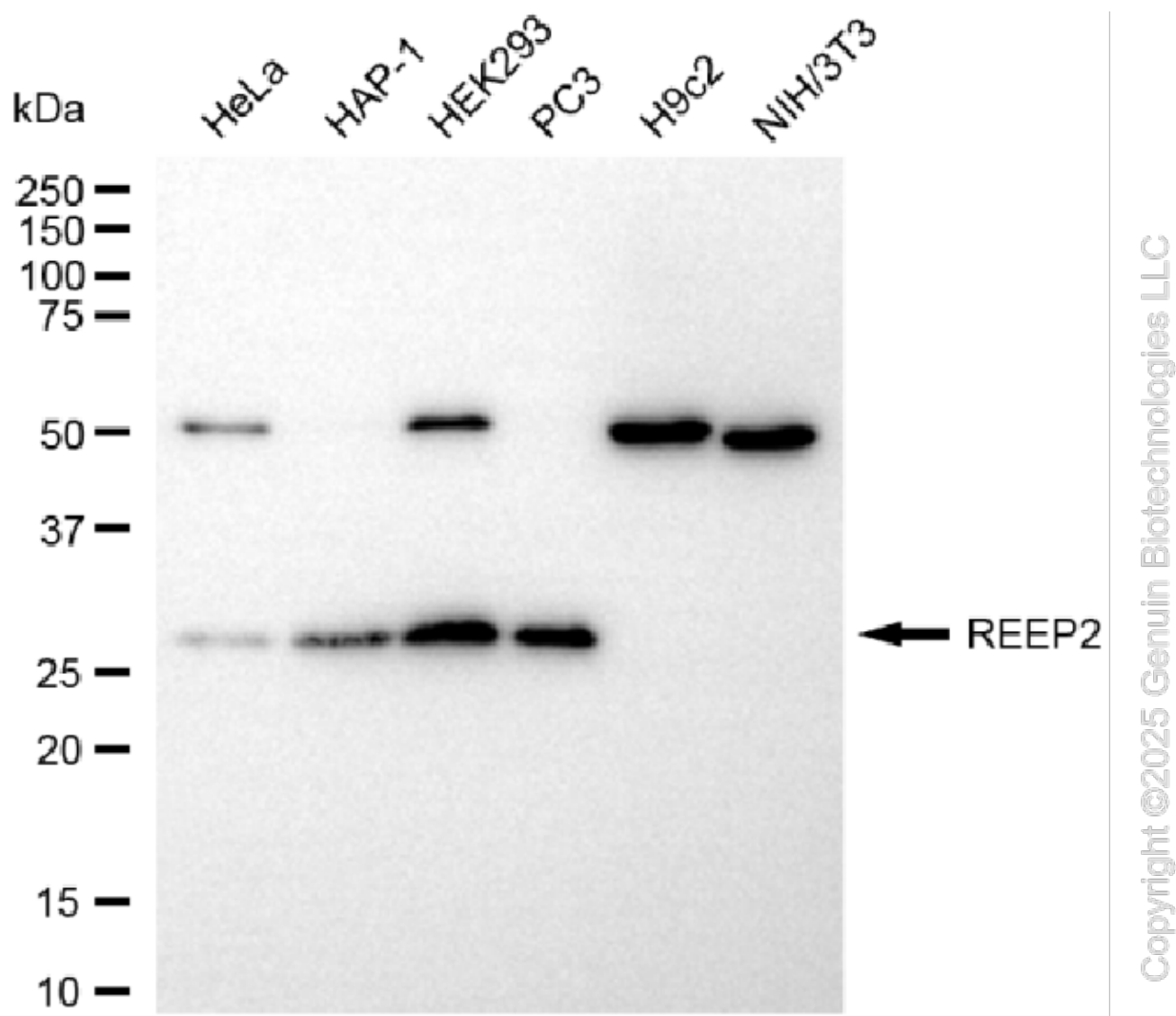
SUPPORT

SUPPORT@GENUINBIOTECH.COM
TEL: +1-540-855-7041

ORDERS

SALES@GENUINBIOTECH.COM
FAX: +1-540-855-7041

WWW.GENUINBIOTECH.COM



Western blotting analysis using anti-REEP2 antibody (Cat#5799). Total cell lysates (30 µg) from various cell lines were loaded and separated by SDS-PAGE. The blot was incubated with anti-REEP2 antibody (Cat#5799, 1:2,500) and HRP-conjugated goat anti-mouse secondary antibody (Cat#101, 1:20,000) respectively. Image was developed using FeQ™ ECL Substrate Kit (Cat#226).