

## Catalog #: 5800

### Aliases

SELENBP1; Selenium Binding Protein 1; Methanethiol Oxidase; HSBP; LPSB; 56 KDa  
Selenium-Binding Protein; HSP56; SBP56; SP56; MTO; Epididymis Secretory Sperm Binding  
Protein Li 134P; Selenium-Binding Protein 1; HEL-S-134P; EC 1.8.3.4; EHMT0; SBP

### Background

Gene Name: SELENBP1

NCBI Gene Entry: [8991](#)

UniProt Entry: [Q13228](#)

### Application Information

Molecular Weight: Predicted, 52 kDa; observed, 50 kDa

Clonality: Mouse monoclonal antibody

Clone ID: 25GB5455

Species Reactivity: Human

Applications Tested: Western blotting (WB)

### Immunogen

Recombinant protein of human SELENBP1

### Isotype

Mouse IgG2a

### Storage Buffer

Supplied in PBS (pH 7.4) containing 50% glycerol, and 0.02% sodium azide.

### Storage

Store at -20 °C for one year.

### Recommended Dilutions

Western Blotting (WB): 1:500-1:2,500

**Note:** This product is for research use only.

### Validation Data

---

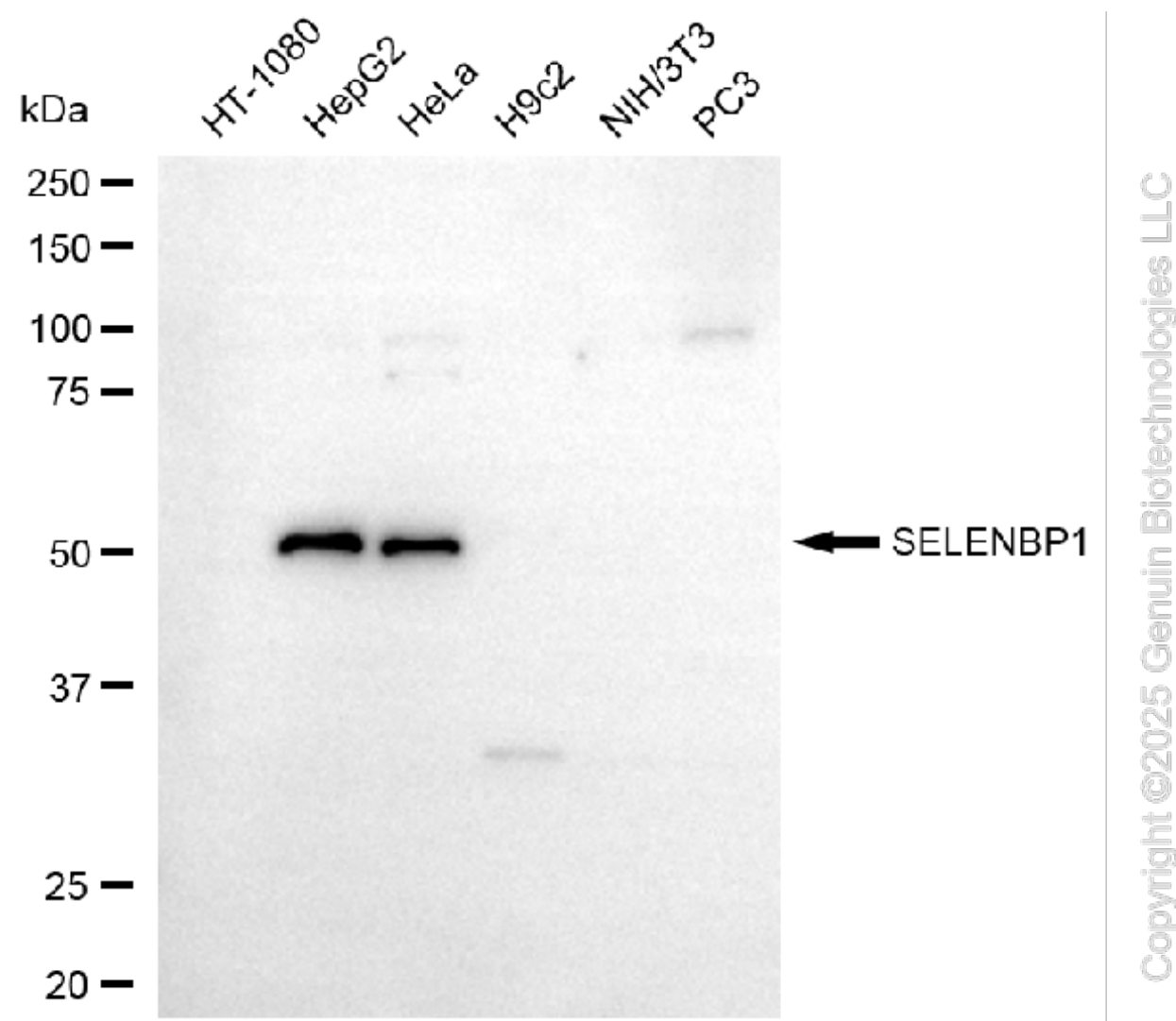
#### SUPPORT

SUPPORT@GENUINBIOTECH.COM  
TEL: +1-540-855-7041

#### ORDERS

SALES@GENUINBIOTECH.COM  
FAX: +1-540-855-7041

[WWW.GENUINBIOTECH.COM](http://WWW.GENUINBIOTECH.COM)



Western blotting analysis using anti-SELENBP1 antibody (Cat#5800). Total cell lysates (30 µg) from various cell lines were loaded and separated by SDS-PAGE. The blot was incubated with anti-SELENBP1 antibody (Cat#5800, 1:2,500) and HRP-conjugated goat anti-mouse secondary antibody (Cat#101, 1:20,000) respectively. Image was developed using FeQ™ ECL Substrate Kit (Cat#226).

**SUPPORT**

SUPPORT@GENUINBIOTECH.COM  
TEL: +1-540-855-7041

**ORDERS**

SALES@GENUINBIOTECH.COM  
FAX: +1-540-855-7041

[WWW.GENUINBIOTECH.COM](http://WWW.GENUINBIOTECH.COM)