

Catalog #: 5802

Aliases

HERPUD1; Homocysteine Inducible ER Protein With Ubiquitin Like Domain 1; HERP; KIAA0025; Mif1; SUP; Homocysteine-Inducible, Endoplasmic Reticulum Stress-Inducible, Ubiquitin-Like Domain Member 1; Homocysteine-Responsive Endoplasmic Reticulum-Resident Ubiquitin-Like Domain Member 1 Protein; Methyl Methanesulfonate (MMF)-Inducible Fragment Protein 1; omocysteine-Inducible Endoplasmic Reticulum Stress-Inducible Ubiquitin-Like Domain Member 1 Protein; MMS-Inducible; MIF1

Background

Gene Name: HERPUD1

NCBI Gene Entry: [9709](#)

UniProt Entry: [Q15011](#)

Application Information

Molecular Weight: Predicted, 44 kDa; observed, 54 kDa

Clonality: Mouse monoclonal antibody

Clone ID: 25GB5465

Species Reactivity: Human, mouse, rat

Applications Tested: Western blotting (WB)

Immunogen

Recombinant protein of human HERPUD1

Isotype

Mouse IgG2a

Storage Buffer

Supplied in PBS (pH 7.4) containing 50% glycerol, and 0.02% sodium azide.

Storage

Store at -20 °C for one year.

Recommended Dilutions

Western Blotting (WB): 1:1,000-1:5,000

SUPPORT

SUPPORT@GENUINBIOTECH.COM
TEL: +1-540-855-7041

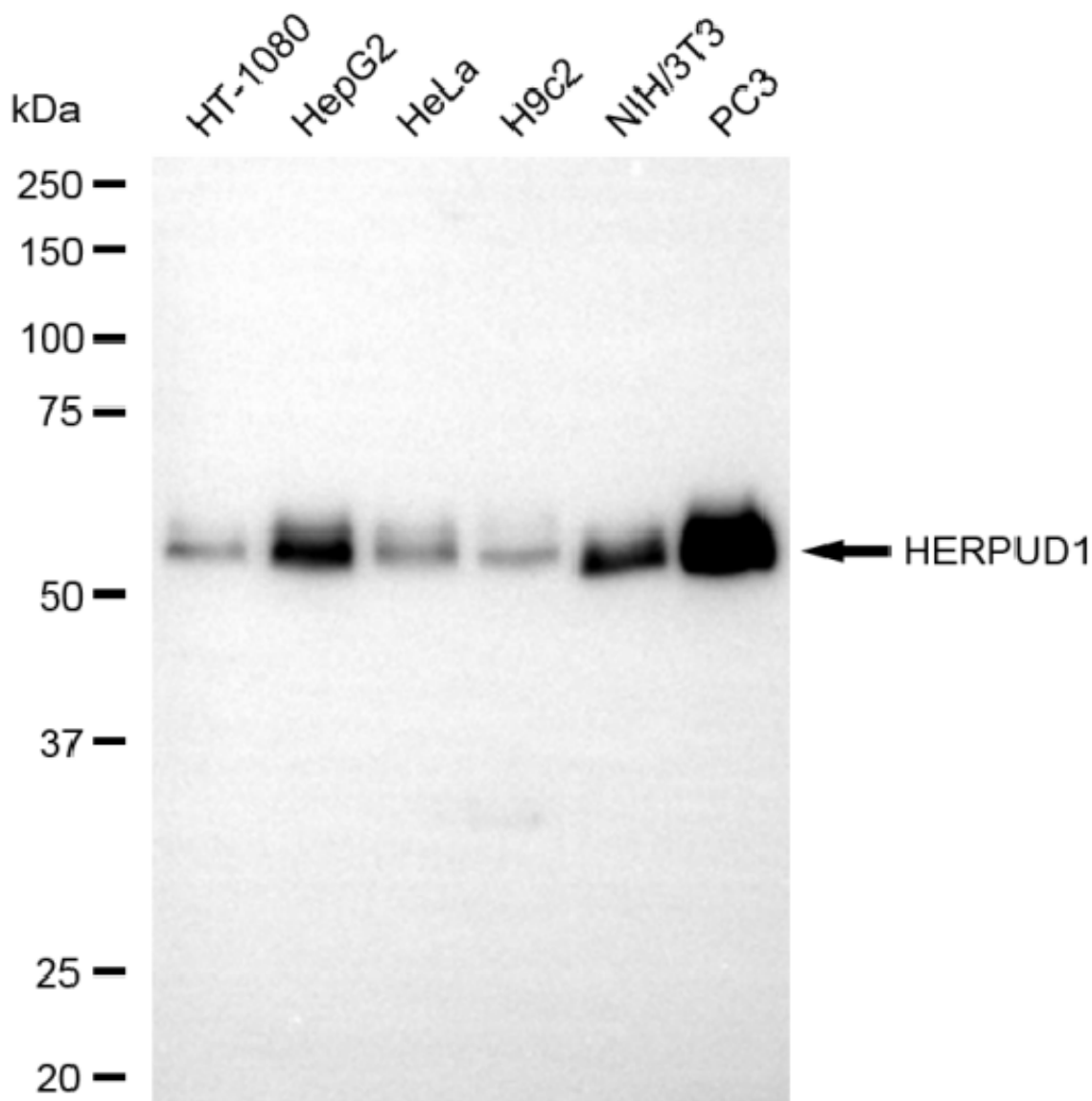
ORDERS

SALES@GENUINBIOTECH.COM
FAX: +1-540-855-7041

WWW.GENUINBIOTECH.COM

Note: This product is for research use only.

Validation Data



Copyright ©2025 Genuin Biotechnologies LLC

Western blotting analysis using anti-HERPUD1 antibody (Cat#5802). Total cell lysates (30 µg) from various cell lines were loaded and separated by SDS-PAGE. The blot was incubated with anti-HERPUD1 antibody (Cat#5802, 1:5,000) and HRP-conjugated goat anti-mouse secondary antibody (Cat#101, 1:20,000) respectively. Image was developed using NaQ™ ECL Substrate Kit (Cat#716).

SUPPORT

SUPPORT@GENUINBIOTECH.COM
TEL: +1-540-855-7041

ORDERS

SALES@GENUINBIOTECH.COM
FAX: +1-540-855-7041

WWW.GENUINBIOTECH.COM