

## Catalog #: 5809

## Aliases

GRK2; G Protein-Coupled Receptor Kinase 2; BARK1; ADRBK1; Beta-Adrenergic Receptor Kinase 1; EC 2.7.11.15; Beta-ARK-1; Adrenergic, Beta, Receptor Kinase 1; G-Protein Coupled Receptor Kinase 2; Adrenergic Beta Receptor Kinase 1; BETA-ARK1; EC 2.7.11 47; BARK

## Background

Gene Name: GRK2

NCBI Gene Entry: [156](#)

UniProt Entry: [P25098](#)

## Application Information

Molecular Weight: Predicted, 80 kDa; observed, 75 kDa

Clonality: Rabbit polyclonal antibody

Species Reactivity: Human, mouse, rat

Applications Tested: Western blotting (WB)

## Immunogen

A synthesized peptide derived from human GRK2

## Isotype

Rabbit IgG

## Storage Buffer

Supplied in PBS (pH 7.4) containing 50% glycerol, and 0.02% sodium azide.

## Storage

Store at -20 °C for one year.

## Recommended Dilutions

Western Blotting (WB): 1:1,000-1:5,000

**Note:** This product is for research use only.

## Validation Data

---

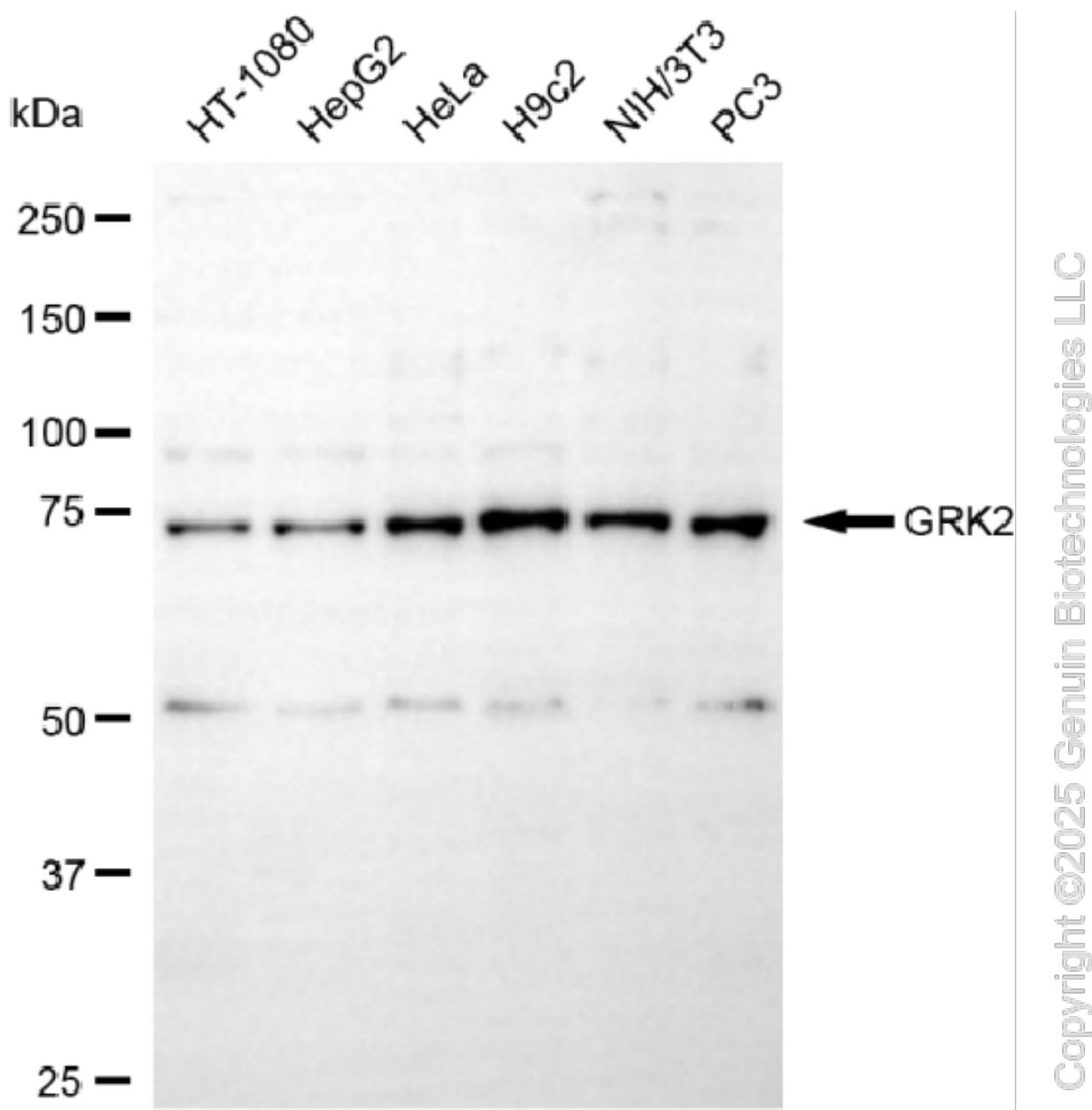
### SUPPORT

SUPPORT@GENUINBIOTECH.COM  
TEL: +1-540-855-7041

### ORDERS

SALES@GENUINBIOTECH.COM  
FAX: +1-540-855-7041

[WWW.GENUINBIOTECH.COM](http://WWW.GENUINBIOTECH.COM)



Western blotting analysis using anti-GRK2 antibody (Cat#5809). Total cell lysates (30  $\mu$ g) from various cell lines were loaded and separated by SDS-PAGE. The blot was incubated with anti-GRK2 antibody (Cat#5809, 1:5,000) and HRP-conjugated goat anti-rabbit secondary antibody (Cat#201, 1:20,000) respectively. Image was developed using NaQ™ ECL Substrate Kit (Cat#716).

**SUPPORT**

SUPPORT@GENUINBIOTECH.COM  
TEL: +1-540-855-7041

**ORDERS**

SALES@GENUINBIOTECH.COM  
FAX: +1-540-855-7041

[WWW.GENUINBIOTECH.COM](http://WWW.GENUINBIOTECH.COM)