

Catalog #: 5822

Aliases

NDUFA1; NADH:Ubiquinone Oxidoreductase Subunit A1; CI-MWFE; MWFE; NADH Dehydrogenase (Ubiquinone) 1 Alpha Subcomplex, 1, 7.5kDa; NADH Dehydrogenase [Ubiquinone] 1 Alpha Subcomplex Subunit 1; NADH-Ubiquinone Oxidoreductase MWFE Subunit; NADH:Ubiquinone Oxidoreductase (Complex 1); Complex I MWFE Subunit; Type I Dehydrogenase; NADH Dehydrogenase (Ubiquinone) 1 Alpha Subcomplex, 1 (7.5kD, MWFE); Complex I-MWFE; MC1DN12; ZNF183

Background

Gene Name: NDUFA1

NCBI Gene Entry: [4694](#)

UniProt Entry: [O15239](#)

Application Information

Molecular Weight: Predicted, 8 kDa; observed, 11 kDa

Clonality: Rabbit monoclonal antibody

Clone ID: 25GB5565

Species Reactivity: Human

Applications Tested: Western blotting (WB)

Immunogen

A synthesized peptide derived from human NDUFA1

Isotype

Rabbit IgG

Storage Buffer

Supplied in PBS (pH 7.4) containing 50% glycerol, and 0.02% sodium azide.

Storage

Store at -20 °C for one year.

Recommended Dilutions

Western Blotting (WB): 1:1,000-1:5,000

SUPPORT

SUPPORT@GENUINBIOTECH.COM
TEL: +1-540-855-7041

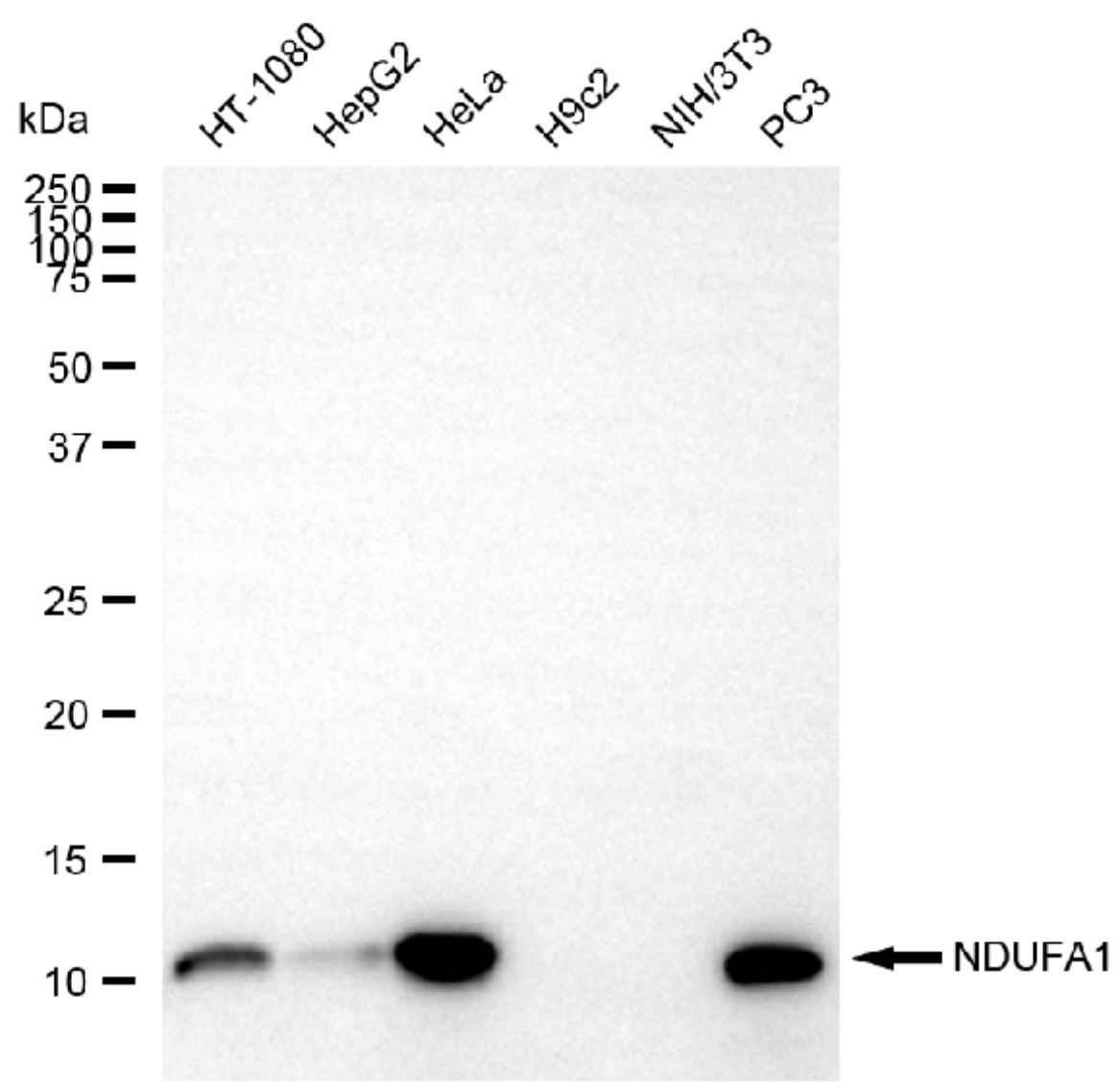
ORDERS

SALES@GENUINBIOTECH.COM
FAX: +1-540-855-7041

WWW.GENUINBIOTECH.COM

Note: This product is for research use only.

Validation Data



Copyright ©2025 Genuin Biotechnologies LLC

Western blotting analysis using anti-NDUFA1 antibody (Cat#5822). Total cell lysates (30 µg) from various cell lines were loaded and separated by SDS-PAGE. The blot was incubated with anti-NDUFA1 antibody (Cat#5822, 1:5,000) and HRP-conjugated goat anti-rabbit secondary antibody (Cat#201, 1:20,000) respectively. Image was developed using NaQ™ ECL Substrate Kit (Cat#716).

SUPPORT

SUPPORT@GENUINBIOTECH.COM
TEL: +1-540-855-7041

ORDERS

SALES@GENUINBIOTECH.COM
FAX: +1-540-855-7041

WWW.GENUINBIOTECH.COM