

## Catalog #: 5824

### Aliases

ARHGDIA; Rho GDP Dissociation Inhibitor Alpha; RHOGDI; GDIA1; Rho GDP Dissociation Inhibitor (GDI) Alpha; Rho GDP-Dissociation Inhibitor 1; GDP-Dissociation Inhibitor, Aplysia RAS-Related 1; Epididymis Secretory Sperm Binding Protein Li 47e; Rho-GDI Alpha; HEL-S-47e; Rho GDI 1; RHOGDI-1; NPHS8

### Background

Gene Name: ARHGDIA

NCBI Gene Entry: [396](#)

UniProt Entry: [P52565](#)

### Application Information

Molecular Weight: Predicted, 23 kDa; observed, 26 kDa

Clonality: Rabbit monoclonal antibody

Clone ID: 25GB5575

Species Reactivity: Human, mouse, rat

Applications Tested: Western blotting (WB)

### Immunogen

A synthesized peptide derived from human RhoGDI

### Isotype

Rabbit IgG

### Storage Buffer

Supplied in PBS (pH 7.4) containing 50% glycerol, and 0.02% sodium azide.

### Storage

Store at -20 °C for one year.

### Recommended Dilutions

Western Blotting (WB): 1:1,000-1:5,000

**Note:** This product is for research use only.

### Validation Data

---

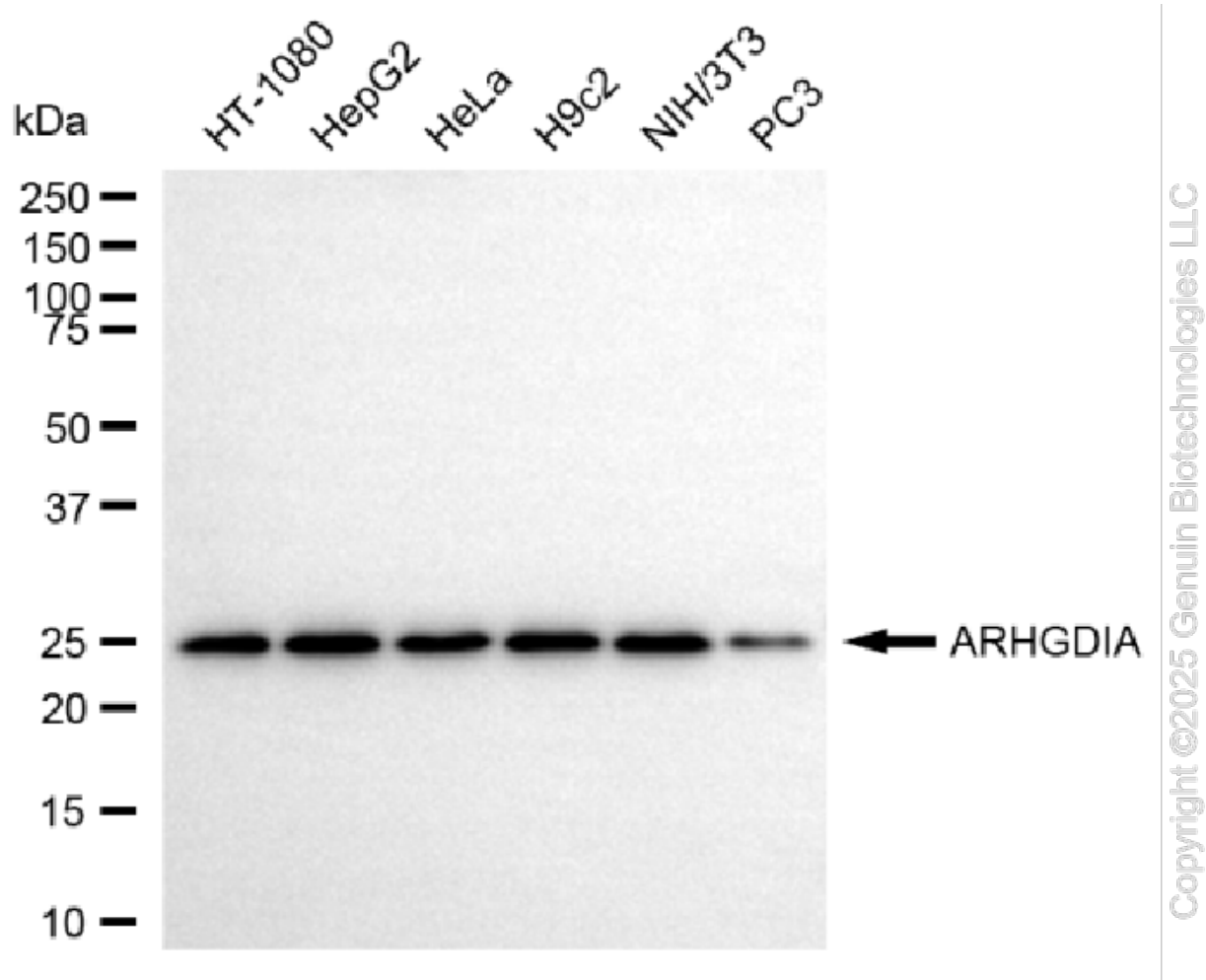
#### SUPPORT

SUPPORT@GENUINBIOTECH.COM  
TEL: +1-540-855-7041

#### ORDERS

SALES@GENUINBIOTECH.COM  
FAX: +1-540-855-7041

[WWW.GENUINBIOTECH.COM](http://WWW.GENUINBIOTECH.COM)



Western blotting analysis using anti-ARHGDIA antibody (Cat#5824). Total cell lysates (30  $\mu$ g) from various cell lines were loaded and separated by SDS-PAGE. The blot was incubated with anti-ARHGDIA antibody (Cat#5824, 1:5,000) and HRP-conjugated goat anti-mouse secondary antibody (Cat#101, 1:20,000) respectively. Image was developed using NaQ™ ECL Substrate Kit (Cat#716).