

Catalog #: 5827

Aliases

CWC27; CWC27 Spliceosome Associated Cyclophilin; Serologically Defined Colon Cancer Antigen 10; SDCCAG-10; NY-CO-10; SDCCAG10; Probable Inactive Peptidyl-Prolyl Cis-Trans Isomerase CWC27 Homolog; CWC27 Spliceosome Associated Protein Homolog; Spliceosome-Associated Protein CWC27 Homolog; Antigen NY-CO-10; PPIase CWC27; CWC27 Spliceosome-Associated Protein Homolog (S. Cerevisiae); Peptidyl-Prolyl Cis-Trans Isomerase CWC27 Homolog; CWC27 Spliceosome-Associated Protein Homolog; Peptidyl-Prolyl Cis-Trans Isomerase SDCCAG10; PPIase SDCCAG10; RPSKA

Background

Gene Name: CWC27

NCBI Gene Entry: [10283](#)

UniProt Entry: [Q6UX04](#)

Application Information

Molecular Weight: Predicted, 54 kDa; observed, 62 kDa

Clonality: Mouse monoclonal antibody

Clone ID: 25GB5405

Species Reactivity: Human, mouse

Applications Tested: Western blotting (WB), flow cytometry (FCM)

Immunogen

Recombinant protein of human CWC27

Isotype

Mouse IgG1

Storage Buffer

Supplied in PBS (pH 7.4) containing 50% glycerol, and 0.02% sodium azide.

Storage

Store at -20 °C for one year.

Recommended Dilutions

Western Blotting (WB): 1:500-1:2,500

Flow Cytometry (FCM): 1:2,000

SUPPORT

SUPPORT@GENUINBIOTECH.COM
TEL: +1-540-855-7041

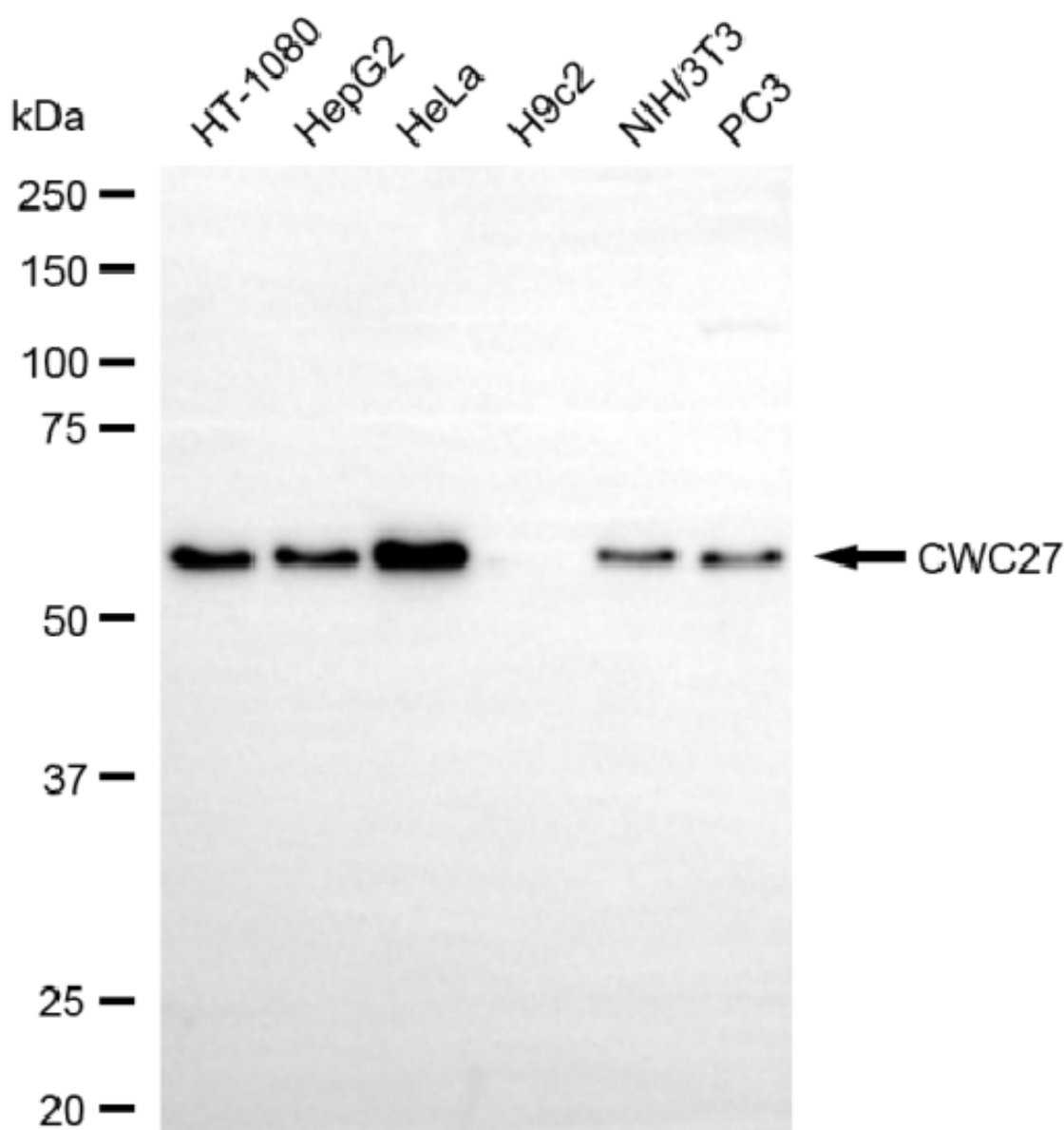
ORDERS

SALES@GENUINBIOTECH.COM
FAX: +1-540-855-7041

WWW.GENUINBIOTECH.COM

Note: This product is for research use only.

Validation Data



Copyright ©2025 Genuin Biotechnologies LLC

Western blotting analysis using anti-CWC27 antibody (Cat#5827). Total cell lysates (30 µg) from various cell lines were loaded and separated by SDS-PAGE. The blot was incubated with anti-CWC27 antibody (Cat#5827, 1:2,500) and HRP-conjugated goat anti-mouse secondary antibody (Cat#101, 1:20,000) respectively. Image was developed using FeQ™ ECL Substrate Kit (Cat#226).

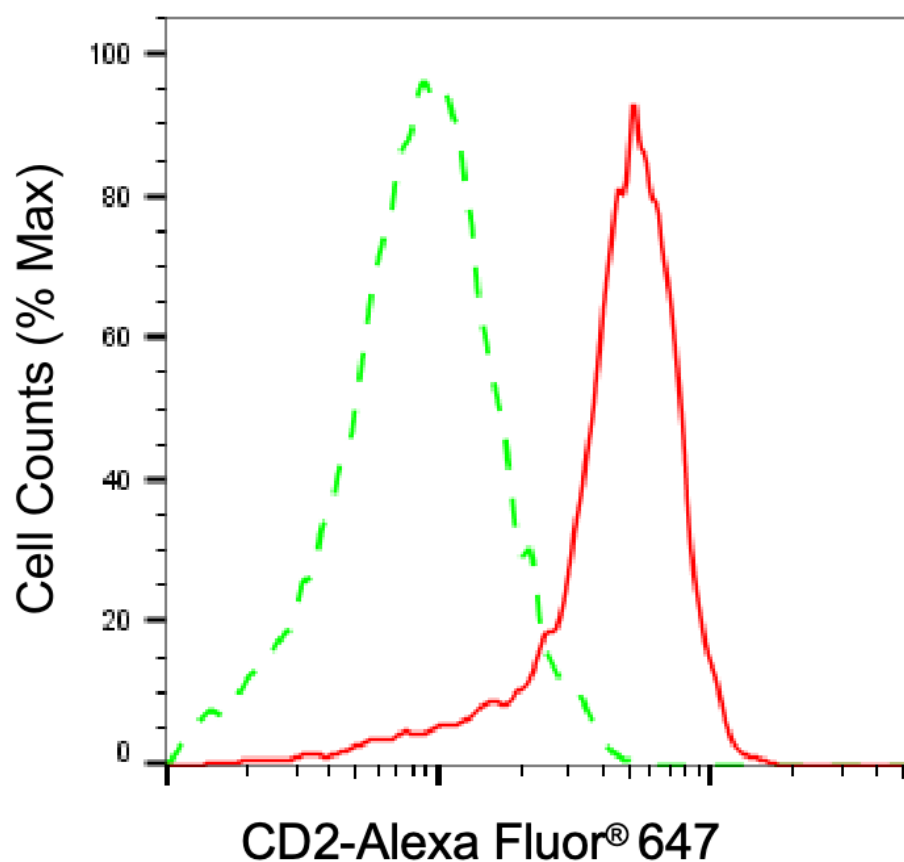
SUPPORT

SUPPORT@GENUINBIOTECH.COM
TEL: +1-540-855-7041

ORDERS

SALES@GENUINBIOTECH.COM
FAX: +1-540-855-7041

WWW.GENUINBIOTECH.COM



Copyright ©2025 Genuin Biotechnologies LLC

Flow cytometric analysis of CD2 expression in Jurkat cells using anti-CD2 antibody (Cat#5827, 1:2,000). Green, isotype control; red, CD2.