

Catalog #: 5830

Aliases

SORD; Sorbitol Dehydrogenase; (R,R)-Butanediol Dehydrogenase; L-Iditol 2-Dehydrogenase; Ribitol Dehydrogenase; Xylitol Dehydrogenase; Polyol Dehydrogenase; EC 1.1.1.14; RDH; SDH; XDH; Epididymis Secretory Sperm Binding Protein Li 95n; EC 1.1.1.56; EC 1.1.1.-; EC 1.1.1.4; EC 1.1.1.9; HEL-S-95n; EC 1.1.1; HMNR8; SORD1; SORDD

Background

Gene Name: SORD

NCBI Gene Entry: [6652](#)

UniProt Entry: [Q00796](#)

Application Information

Molecular Weight: Predicted, 38 kDa, observed, 38 kDa

Clonality: Mouse monoclonal antibody

Clone ID: 25GB5045

Species Reactivity: Human

Applications Tested: Western blotting (WB), flow cytometry (FCM)

Immunogen

Recombinant protein of human SORD

Isotype

Mouse IgG2a

Storage Buffer

Supplied in PBS (pH 7.4) containing 50% glycerol, and 0.02% sodium azide.

Storage

Store at -20 °C for one year.

Recommended Dilutions

Western Blotting (WB): 1:400-1:2,000

Flow Cytometry (FCM): 1:2,000

Note: This product is for research use only.

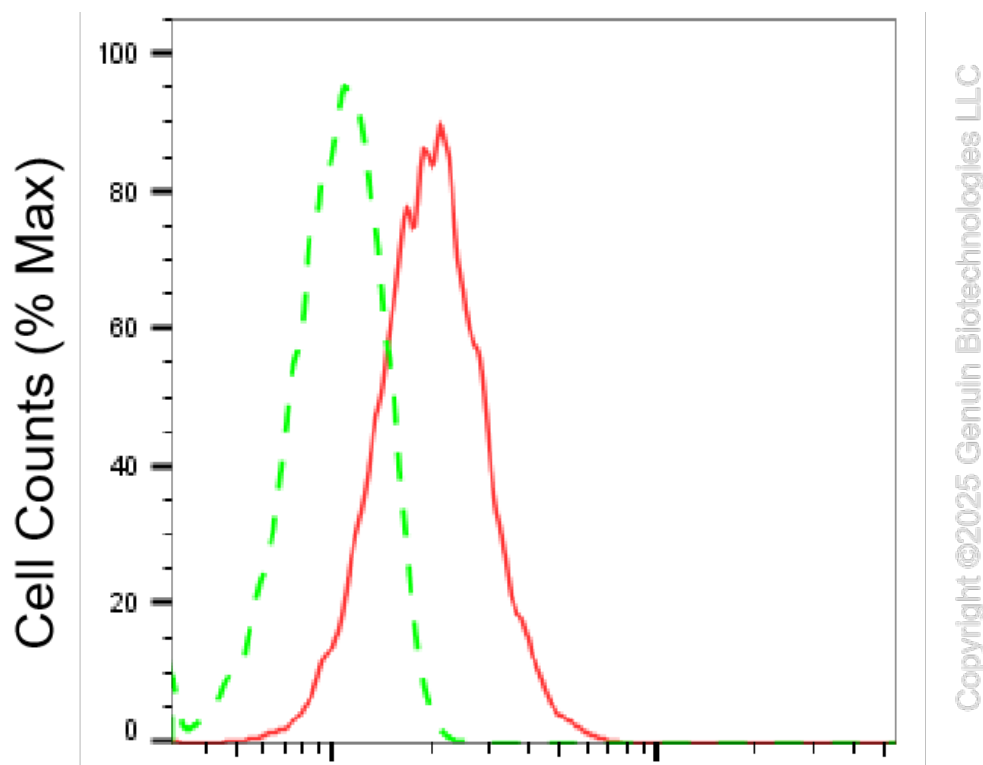
SUPPORT

SUPPORT@GENUINBIOTECH.COM
TEL: +1-540-855-7041

ORDERS

SALES@GENUINBIOTECH.COM
FAX: +1-540-855-7041

WWW.GENUINBIOTECH.COM

Validation Data**Sorbitol dehydrogenase-Alexa Fluor® 647**

Flow cytometric analysis of Sorbitol dehydrogenase expression in HepG2 cells using anti-Sorbitol dehydrogenase antibody (Cat#5830, 1:2,000). Green, isotype control; red, Sorbitol dehydrogenase.

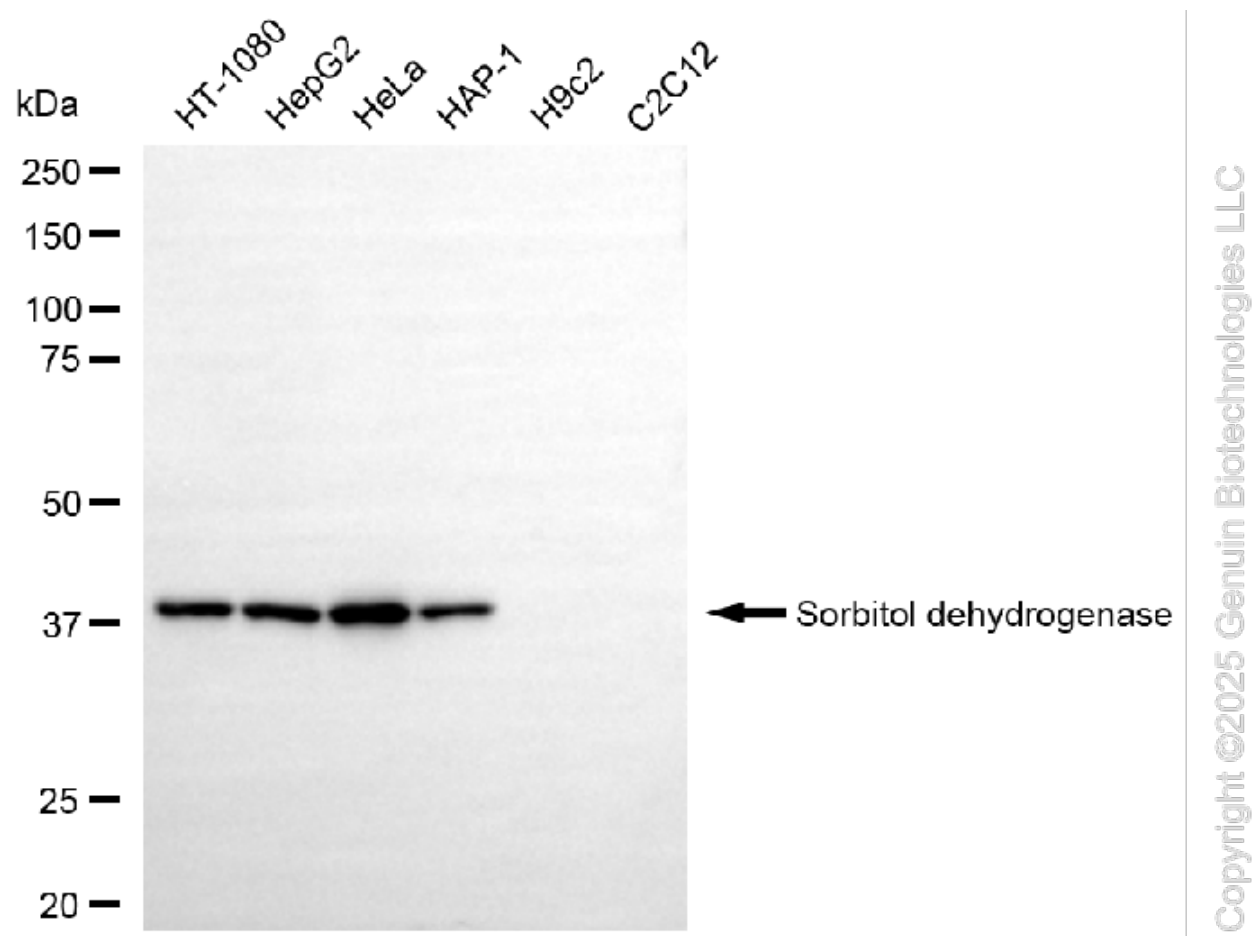
SUPPORT

SUPPORT@GENUINBIOTECH.COM
TEL: +1-540-855-7041

ORDERS

SALES@GENUINBIOTECH.COM
FAX: +1-540-855-7041

WWW.GENUINBIOTECH.COM



Western blotting analysis using anti-sorbitol dehydrogenase antibody (Cat#5830). Total cell lysates (30 μ g) from various cell lines were loaded and separated by SDS-PAGE. The blot was incubated with anti-sorbitol dehydrogenase antibody (Cat#5830, 1:2,000) and HRP-conjugated goat anti-mouse secondary antibody (Cat#101, 1:20,000) respectively. Image was developed using FeQ™ ECL Substrate Kit (Cat#226).

SUPPORT

SUPPORT@GENUINBIOTECH.COM
TEL: +1-540-855-7041

ORDERS

SALES@GENUINBIOTECH.COM
FAX: +1-540-855-7041

WWW.GENUINBIOTECH.COM