

## Catalog #: 5833

### Aliases

PSMC3; Proteasome 26S Subunit, ATPase 3; TBP1; TBP-1; RPT5; Proteasome (Prosome, Macropain) 26S Subunit, ATPase, 3; 26S Proteasome AAA-ATPase Subunit RPT5; 26S Proteasome Regulatory Subunit 6A; Proteasome Subunit P50; Tat-Binding Protein 1; Human Immunodeficiency Virus Tat Transactivator Binding Protein-1; 26S Protease Regulatory Subunit 6A; Testicular Secretory Protein Li 42; Proteasome 26S Subunit ATPase; Tat-Binding Protein-1; DCIDP

### Background

Gene Name: PSMC3

NCBI Gene Entry: [5702](#)

UniProt Entry: [P17980](#)

### Application Information

Molecular Weight: Predicted, 49 kDa, observed, 49 kDa

Clonality: Mouse monoclonal antibody

Clone ID: 25GB5060

Species Reactivity: Human, mouse, rat

Applications Tested: Western blotting (WB), flow cytometry (FCM)

### Immunogen

Recombinant protein of human PSMC3

### Isotype

Mouse IgG1

### Storage Buffer

Supplied in PBS (pH 7.4) containing 50% glycerol, and 0.02% sodium azide.

### Storage

Store at -20 °C for one year.

### Recommended Dilutions

Western Blotting (WB): 1:500-1:2,500

Flow Cytometry (FCM): 1:2,000

---

#### SUPPORT

SUPPORT@GENUINBIOTECH.COM  
TEL: +1-540-855-7041

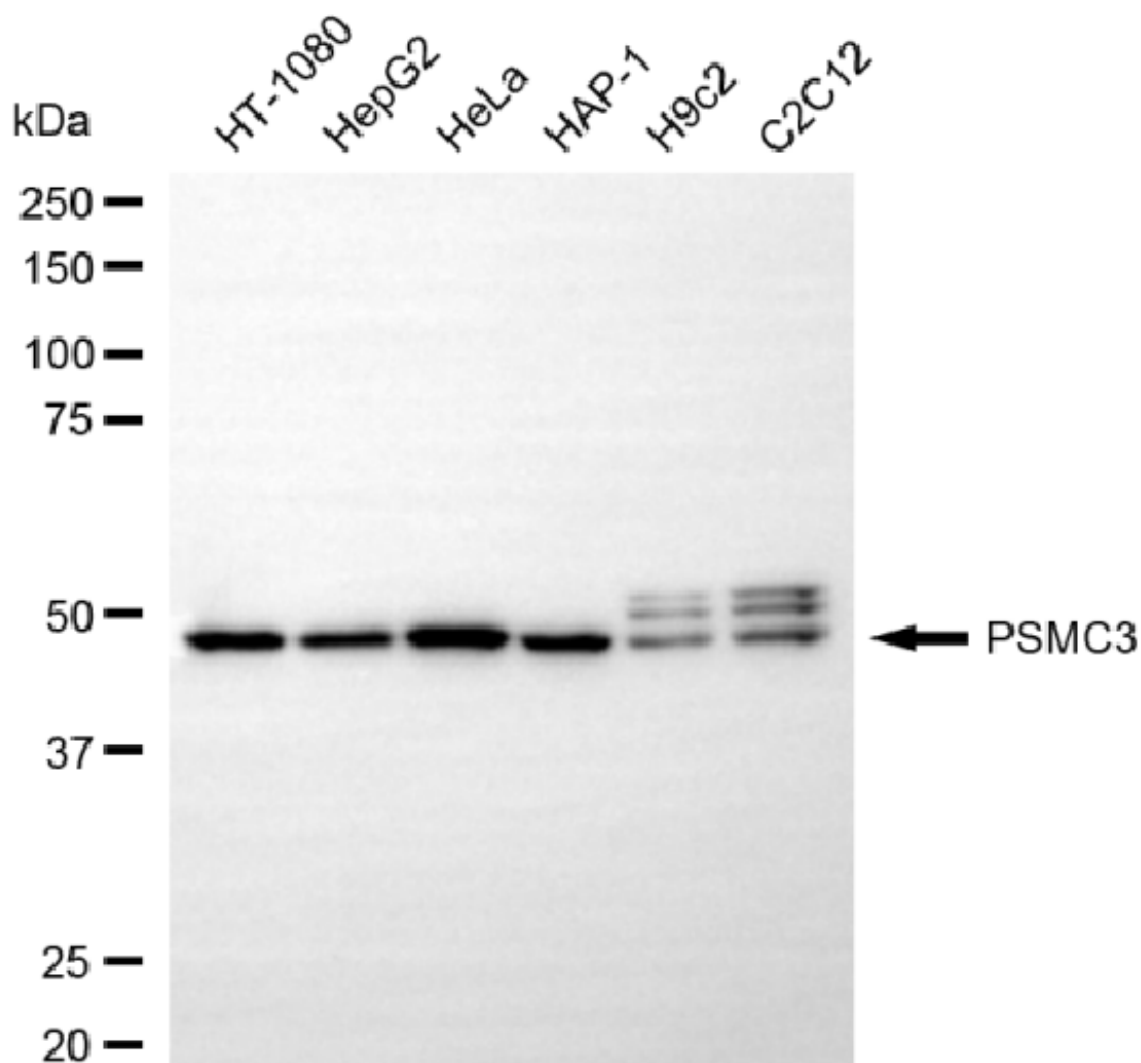
#### ORDERS

SALES@GENUINBIOTECH.COM  
FAX: +1-540-855-7041

[WWW.GENUINBIOTECH.COM](http://WWW.GENUINBIOTECH.COM)

**Note:** This product is for research use only.

## Validation Data



Copyright ©2025 Genuin Biotechnologies LLC

Western blotting analysis using anti-PSMC3 antibody (Cat#5833). Total cell lysates (30 µg) from various cell lines were loaded and separated by SDS-PAGE. The blot was incubated with anti-PSMC3 antibody (Cat#5833, 1:2,500) and HRP-conjugated goat anti-mouse secondary antibody (Cat#101, 1:20,000) respectively. Image was developed using NaQ™ ECL Substrate Kit (Cat#716).

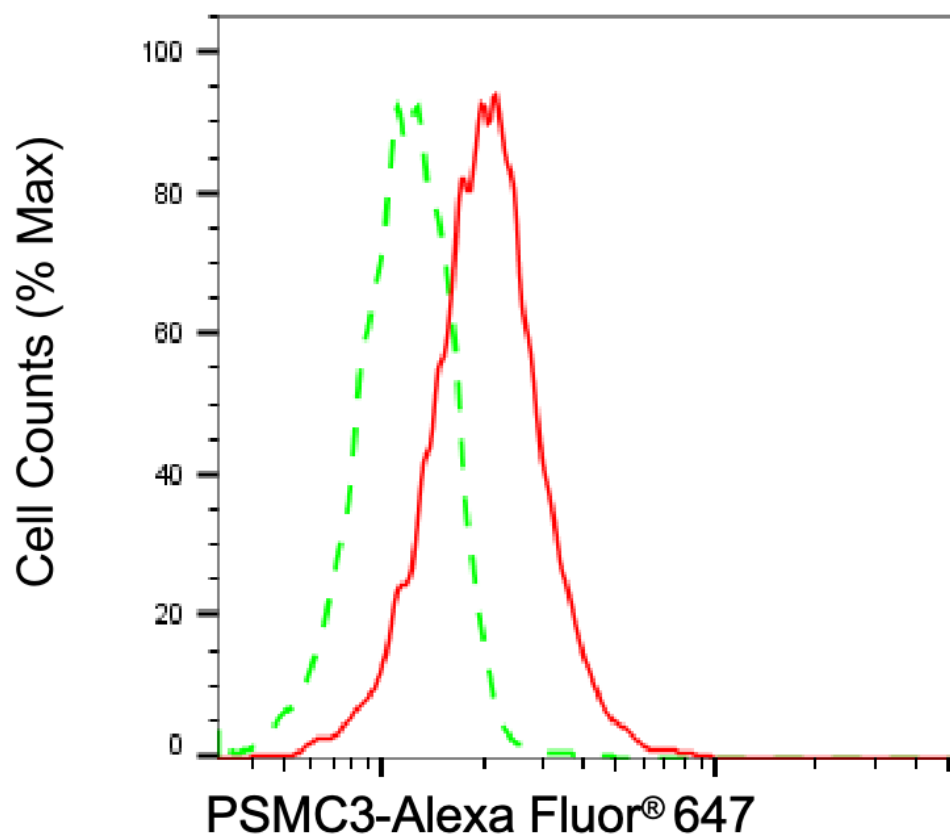
### SUPPORT

SUPPORT@GENUINBIOTECH.COM  
TEL: +1-540-855-7041

### ORDERS

SALES@GENUINBIOTECH.COM  
FAX: +1-540-855-7041

WWW.GENUINBIOTECH.COM



Copyright ©2025 Genuin Biotechnologies LLC

Flow cytometric analysis of PSMC3 expression in HT-1080 cells using anti-PSMC3 antibody (Cat#5833, 1:2,000). Green, isotype control; red, PSMC3.