

Catalog #: 5834

Aliases

SIL1; SIL1 Nucleotide Exchange Factor ; BAP; ULG5; Nucleotide Exchange Factor SIL1; BiP-Associated Protein; MSS; SIL1 Homolog, Endoplasmic Reticulum Chaperone (S. Cerevisiae); SIL1-Like Protein Endoplasmic Reticulum Chaperone; SIL1 Homolog, Endoplasmic Reticulum Chaperone; Marinesco-Sjogren Syndrome

Background

Gene Name: SIL1

NCBI Gene Entry: [64374](#)

UniProt Entry: [Q9H173](#)

Application Information

Molecular Weight: Predicted, 52 kDa, observed, 52 kDa

Clonality: Mouse monoclonal antibody

Clone ID: 25GB5095

Species Reactivity: Human

Applications Tested: Western blotting (WB)

Immunogen

Recombinant protein of human SIL1

Isotype

Mouse IgG1

Storage Buffer

Supplied in PBS (pH 7.4) containing 50% glycerol, and 0.02% sodium azide.

Storage

Store at -20 °C for one year.

Recommended Dilutions

Western Blotting (WB): 1:500-1:2,500

Note: This product is for research use only.

Validation Data

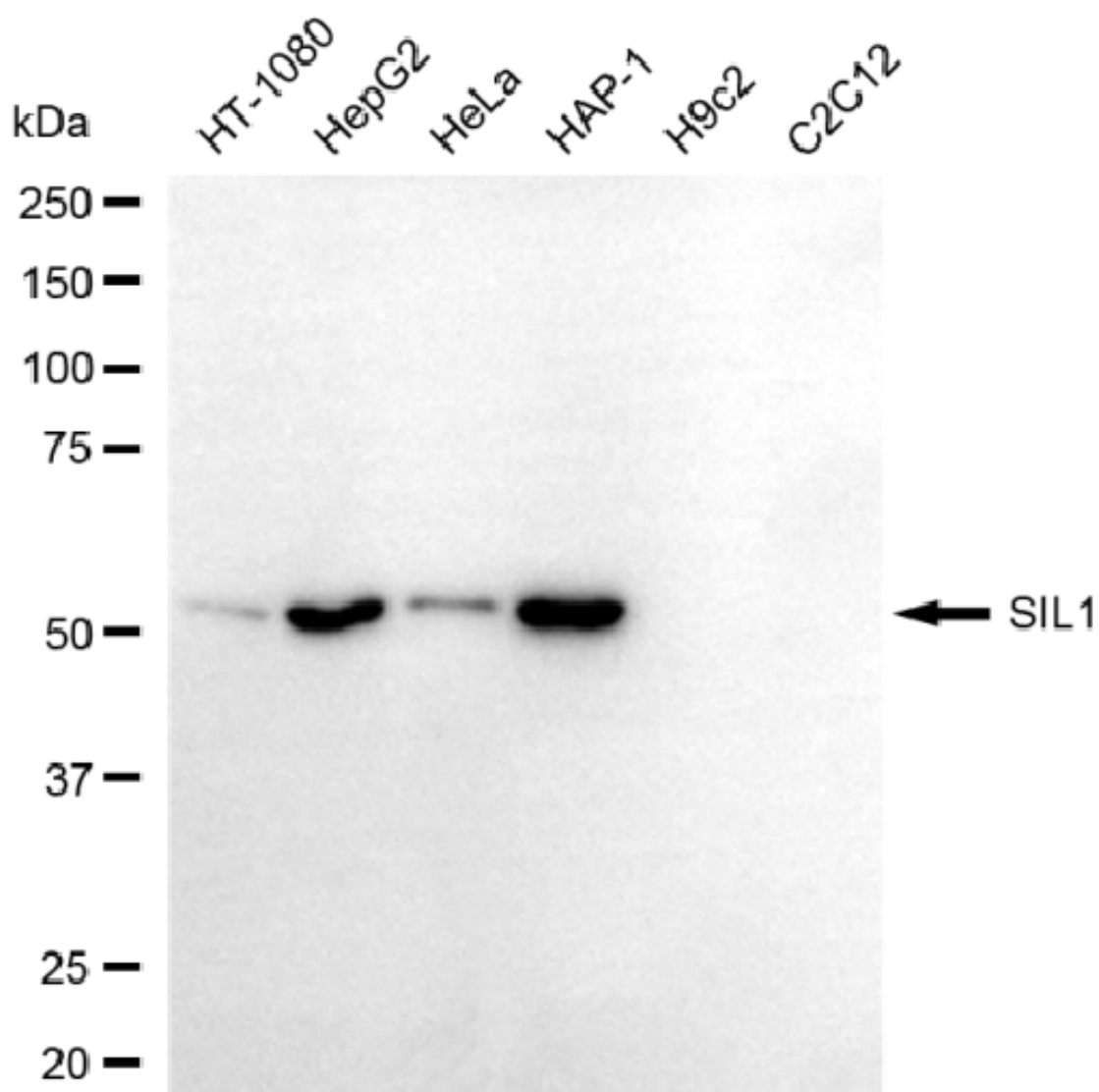
SUPPORT

SUPPORT@GENUINBIOTECH.COM
TEL: +1-540-855-7041

ORDERS

SALES@GENUINBIOTECH.COM
FAX: +1-540-855-7041

WWW.GENUINBIOTECH.COM



Copyright ©2025 Genuin Biotechnologies LLC

Western blotting analysis using anti-SIL1 antibody (Cat#5834). Total cell lysates (30 µg) from various cell lines were loaded and separated by SDS-PAGE. The blot was incubated with anti-SIL1 antibody (Cat#5834, 1:2,500) and HRP-conjugated goat anti-mouse secondary antibody (Cat#101, 1:20,000) respectively. Image was developed using FeQ™ ECL Substrate Kit (Cat#226).

SUPPORT

SUPPORT@GENUINBIOTECH.COM
TEL: +1-540-855-7041

ORDERS

SALES@GENUINBIOTECH.COM
FAX: +1-540-855-7041

WWW.GENUINBIOTECH.COM