

Catalog #: 5841

Aliases

SPR; Sepiapterin Reductase; SDR38C1; Sepiapterin Reductase (7,8-Dihydrobiopterin:NADP+ Oxidoreductase); Sepiapterin Reductase (L-Erythro-7,8-Dihydrobiopterin Forming); Short Chain Dehydrogenase/Reductase Family 38C, Member 1; EC 1.1.1.153

Background

Gene Name: SPR

NCBI Gene Entry: [6697](#)

UniProt Entry: [P35270](#)

Application Information

Molecular Weight: Predicted, 28 kDa, observed, 26 kDa

Clonality: Mouse monoclonal antibody

Clone ID: 25GB5130

Species Reactivity: Human

Applications Tested: Western blotting (WB), flow cytometry (FCM)

Immunogen

Recombinant protein of human SPR

Isotype

Mouse IgG1

Storage Buffer

Supplied in PBS (pH 7.4) containing 50% glycerol, and 0.02% sodium azide.

Storage

Store at -20 °C for one year.

Recommended Dilutions

Western Blotting (WB): 1:500-1:2,500

Flow Cytometry (FCM): 1:2,000

Note: This product is for research use only.

Validation Data

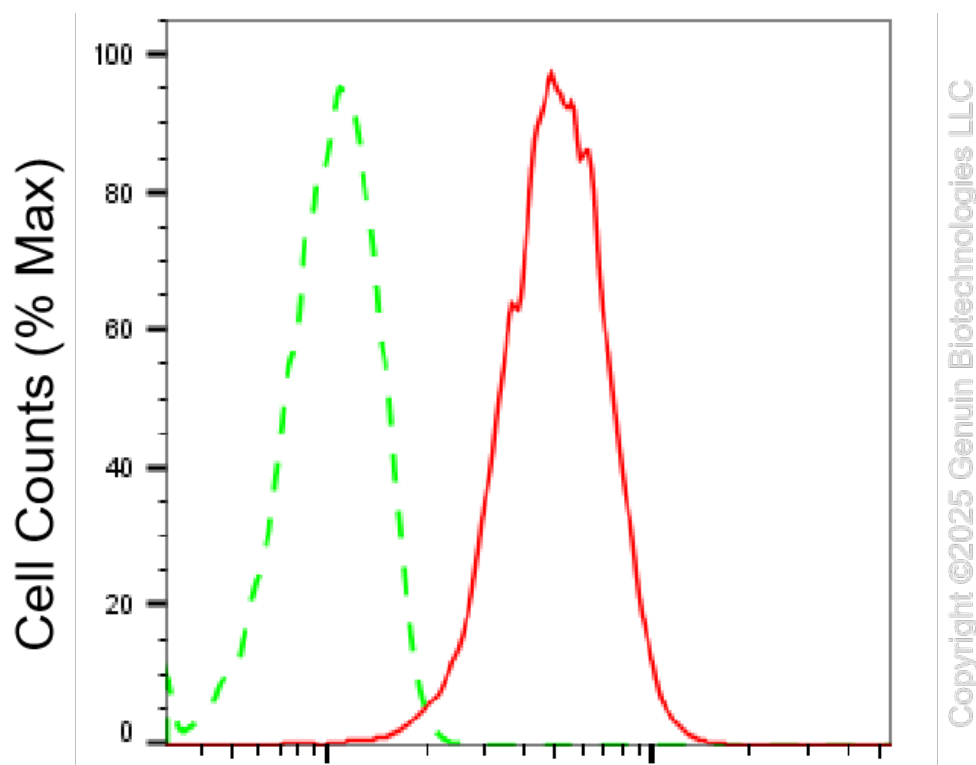
SUPPORT

SUPPORT@GENUINBIOTECH.COM
TEL: +1-540-855-7041

ORDERS

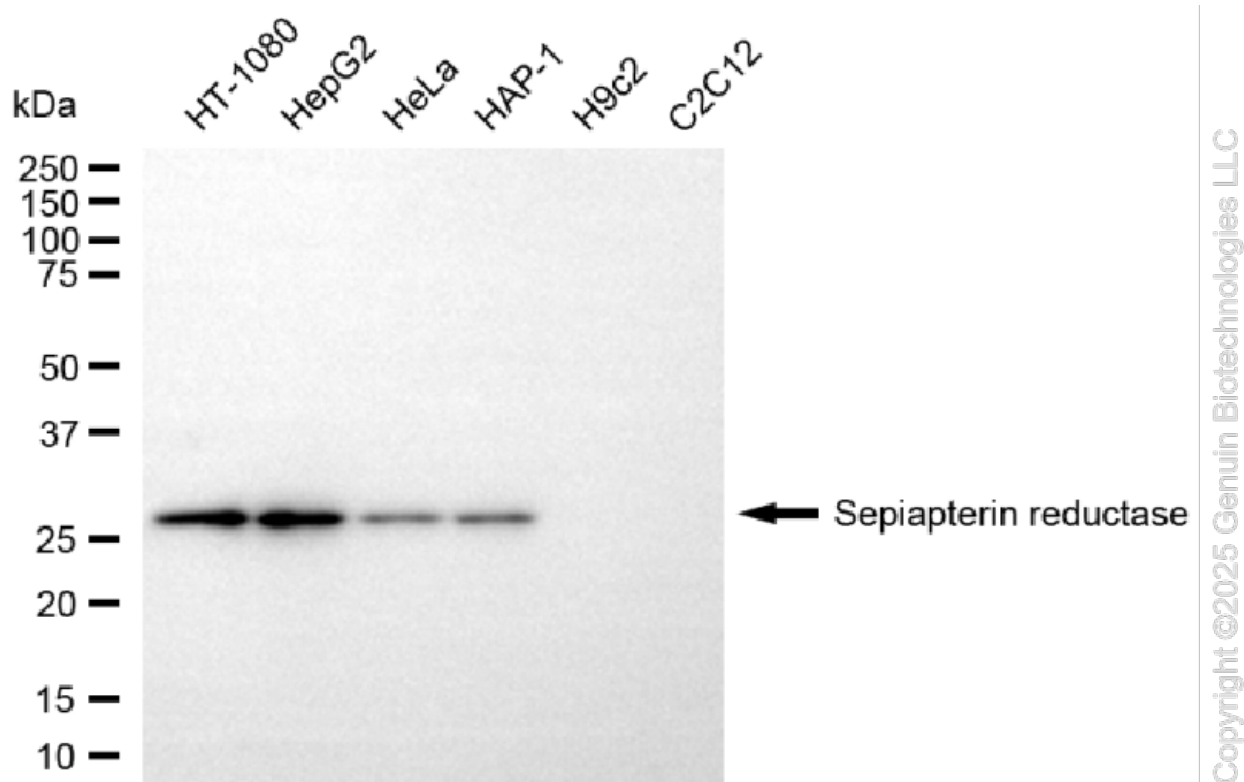
SALES@GENUINBIOTECH.COM
FAX: +1-540-855-7041

WWW.GENUINBIOTECH.COM



Sepiapterin reductase-Alexa Fluor® 647

Flow cytometric analysis of Sepiapterin reductase expression in HepG2 cells using anti-Sepiapterin reductase antibody (Cat#5841, 1:2,000). Green, isotype control; red, Sepiapterin reductase.



Western blotting analysis using anti-sepiapterin reductase antibody (Cat#5841). Total cell lysates (30 μ g) from various cell lines were loaded and separated by SDS-PAGE. The blot was incubated with anti-sepiapterin reductase antibody (Cat#5841, 1:2,500) and HRP-conjugated goat anti-mouse secondary antibody (Cat#101, 1:20,000) respectively. Image was developed using FeQ™ ECL Substrate Kit (Cat#226).

SUPPORT

SUPPORT@GENUINBIOTECH.COM
TEL: +1-540-855-7041

ORDERS

SALES@GENUINBIOTECH.COM
FAX: +1-540-855-7041

WWW.GENUINBIOTECH.COM