

Catalog #: 5845

Aliases

PDE2A; Phosphodiesterase 2A; CGMP-Dependent 3',5'-Cyclic Phosphodiesterase; Cyclic GMP-Stimulated Phosphodiesterase; Phosphodiesterase 2A, CGMP-Stimulated; EC 3.1.4.17; CGS-PDE; CGSPDE; CGMP-Stimulated Phosphodiesterase 1; CGMP-Stimulated Phosphodiesterase 2; CGMP-Stimulated Phosphodiesterase 4; EC 3.1.4; IDDPADS; PDE2A1; PED2A4

Background

Gene Name: PDE2A

NCBI Gene Entry: [5138](#)

UniProt Entry: [O00408](#)

Application Information

Molecular Weight: Predicted, 106 kDa, observed, 106 kDa

Clonality: Mouse monoclonal antibody

Clone ID: 25GB5150

Species Reactivity: Human, mouse

Applications Tested: Western blotting (WB), flow cytometry (FCM)

Immunogen

Recombinant protein of human PDE2A

Isotype

Mouse IgG2b

Storage Buffer

Supplied in PBS (pH 7.4) containing 50% glycerol, and 0.02% sodium azide.

Storage

Store at -20 °C for one year.

Recommended Dilutions

Western Blotting (WB): 1:500-1:2,500

Flow Cytometry (FCM): 1:2,000

Note: This product is for research use only.

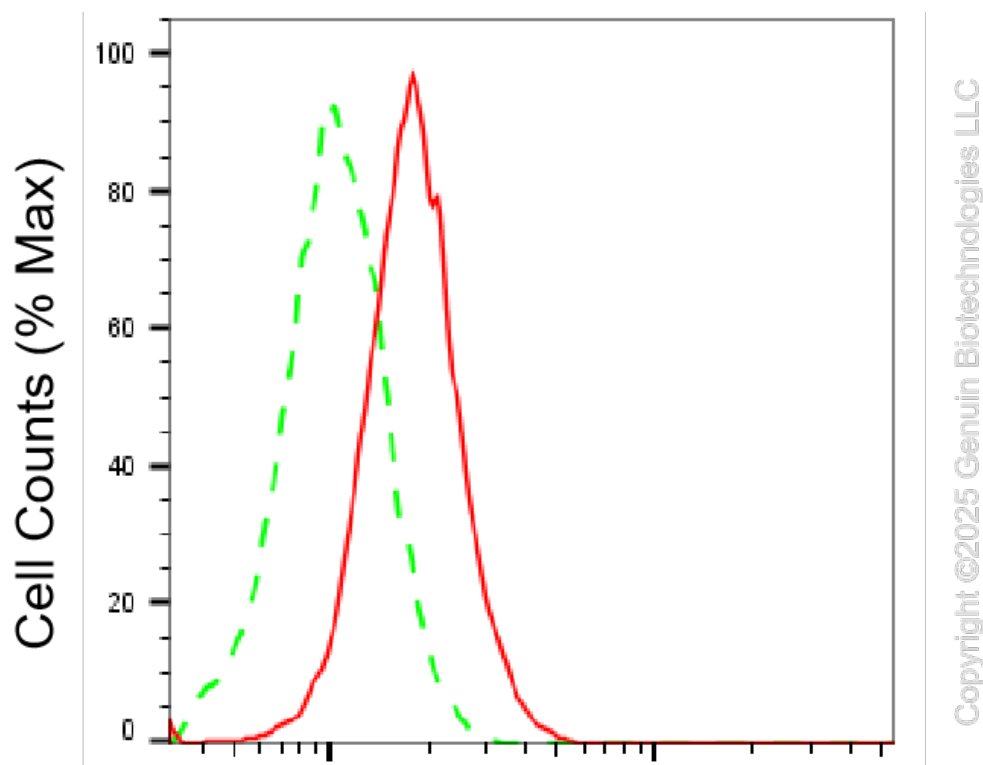
SUPPORT

SUPPORT@GENUINBIOTECH.COM
TEL: +1-540-855-7041

ORDERS

SALES@GENUINBIOTECH.COM
FAX: +1-540-855-7041

WWW.GENUINBIOTECH.COM

Validation Data**Phosphodiesterase 2A-Alexa Fluor® 647**

Flow cytometric analysis of Phosphodiesterase 2A expression in C2C12 cells using anti-Phosphodiesterase 2A antibody (Cat#5845, 1:2,000). Green, isotype control; red, Phosphodiesterase 2A.

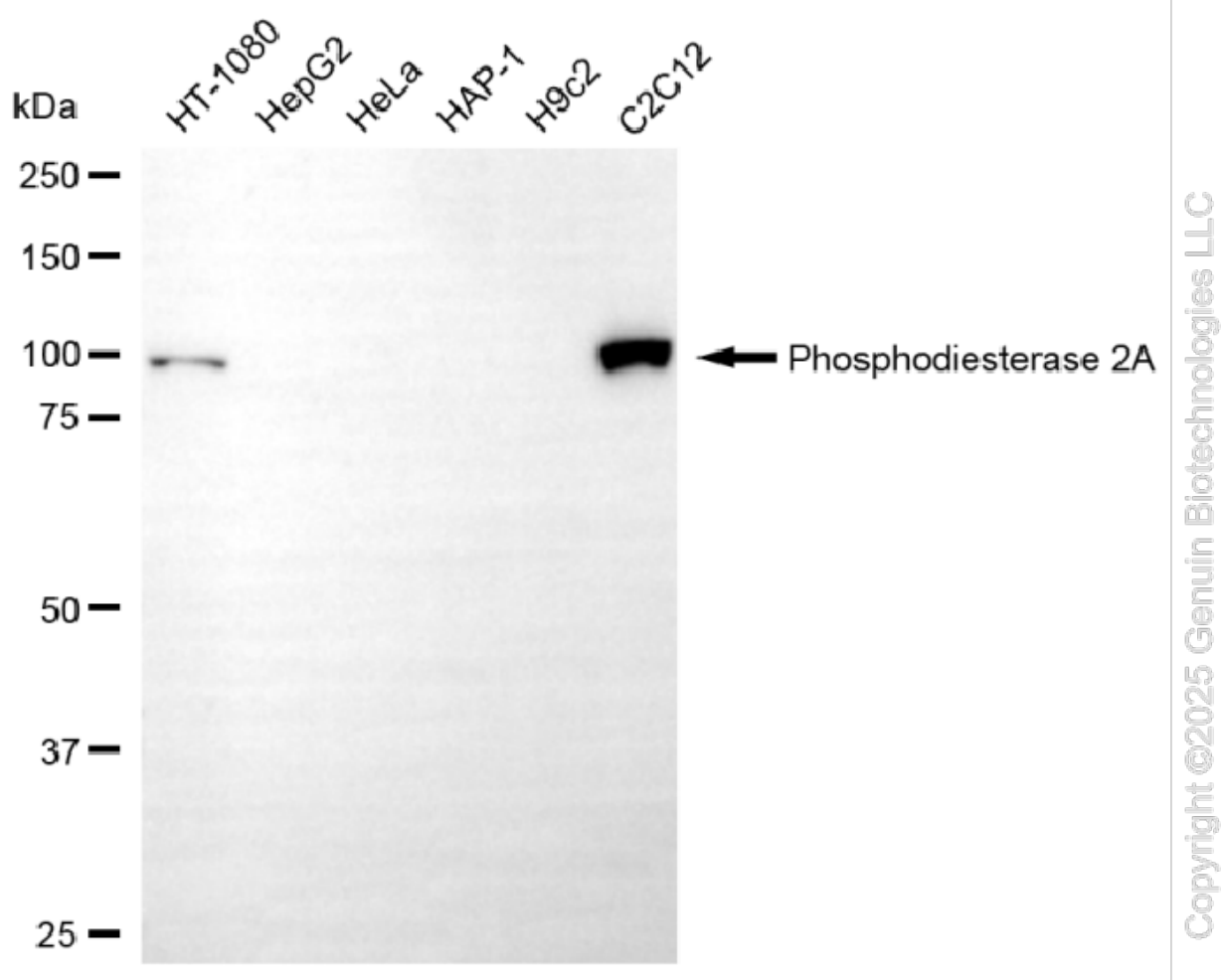
SUPPORT

SUPPORT@GENUINBIOTECH.COM
TEL: +1-540-855-7041

ORDERS

SALES@GENUINBIOTECH.COM
FAX: +1-540-855-7041

WWW.GENUINBIOTECH.COM



Western blotting analysis using anti-phosphodiesterase 2A antibody (Cat#5845). Total cell lysates (30 µg) from various cell lines were loaded and separated by SDS-PAGE. The blot was incubated with anti-phosphodiesterase 2A antibody (Cat#5845, 1:2,500) and HRP-conjugated goat anti-mouse secondary antibody (Cat#101, 1:20,000) respectively. Image was developed using NaQ™ ECL Substrate Kit (Cat#716).

SUPPORT

SUPPORT@GENUINBIOTECH.COM
TEL: +1-540-855-7041

ORDERS

SALES@GENUINBIOTECH.COM
FAX: +1-540-855-7041

WWW.GENUINBIOTECH.COM