

## Catalog #: 5846

### Aliases

PRKCE; Protein Kinase C Epsilon; Protein Kinase C Epsilon Type; NPKC-Epsilon; EC 2.7.11.13;  
PKCE; Protein Kinase C, Epsilon; EC 2.7.11

### Background

Gene Name: PRKCE

NCBI Gene Entry: [5581](#)

UniProt Entry: [Q02156](#)

### Application Information

Molecular Weight: Predicted, 84 kDa, observed, 95 kDa

Clonality: Mouse monoclonal antibody

Clone ID: 25GB5155

Species Reactivity: Human

Applications Tested: Western blotting (WB)

### Immunogen

Recombinant protein of human PRKCE

### Isotype

Mouse IgG1

### Storage Buffer

Supplied in PBS (pH 7.4) containing 50% glycerol, and 0.02% sodium azide.

### Storage

Store at -20 °C for one year.

### Recommended Dilutions

Western Blotting (WB): 1:400-1:2,000

**Note:** This product is for research use only.

### Validation Data

---

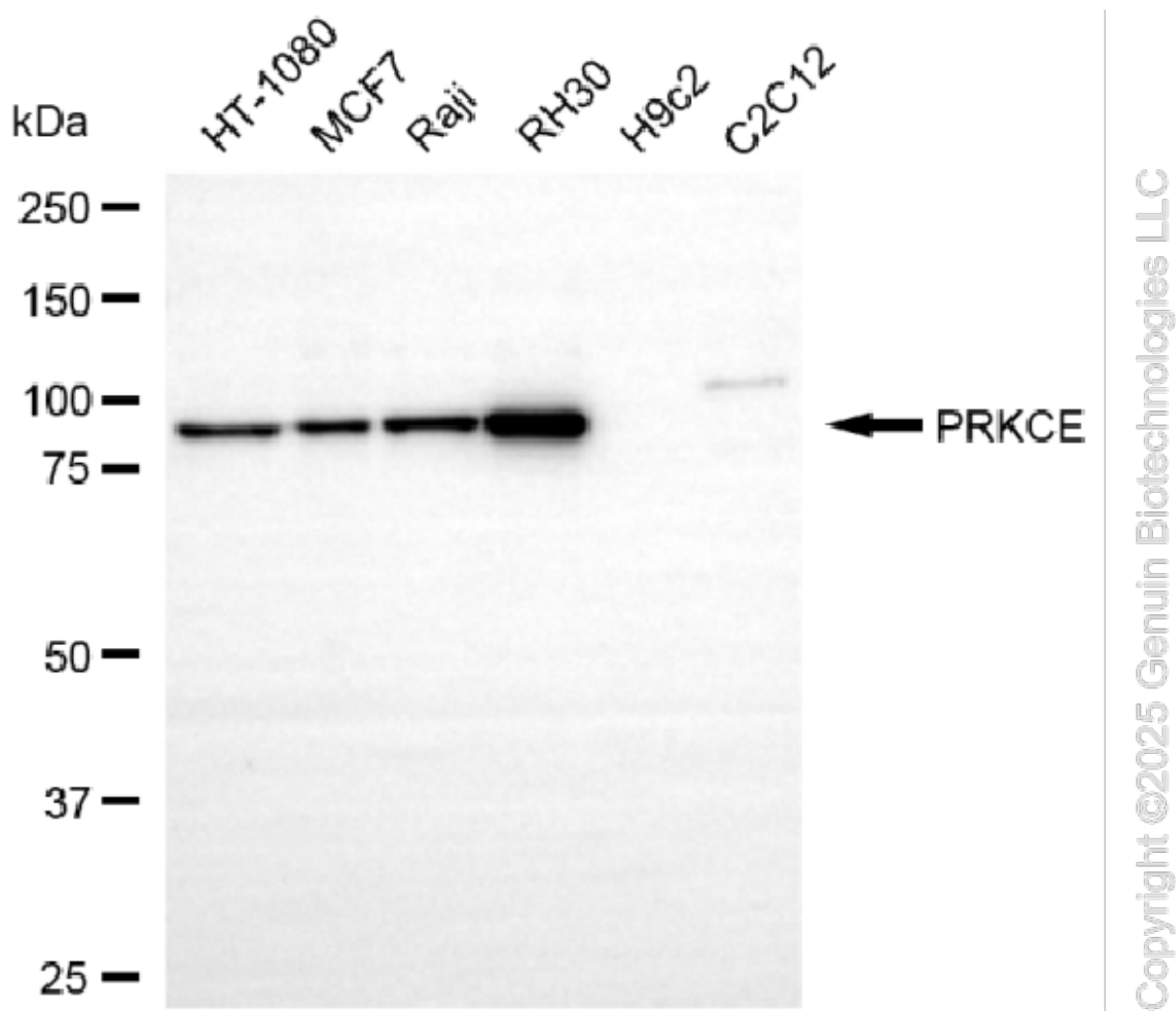
#### SUPPORT

SUPPORT@GENUINBIOTECH.COM  
TEL: +1-540-855-7041

#### ORDERS

SALES@GENUINBIOTECH.COM  
FAX: +1-540-855-7041

[WWW.GENUINBIOTECH.COM](http://WWW.GENUINBIOTECH.COM)



Western blotting analysis using anti-PRKCE antibody (Cat#5846). Total cell lysates (30  $\mu$ g) from various cell lines were loaded and separated by SDS-PAGE. The blot was incubated with anti-PRKCE antibody (Cat#5846, 1:2,000) and HRP-conjugated goat anti-mouse secondary antibody (Cat#101, 1:20,000) respectively. Image was developed using NaQ™ ECL Substrate Kit (Cat#716).