

Catalog #: 5848

Aliases

MEF2C; Myocyte Enhancer Factor 2C; Myocyte-Specific Enhancer Factor 2C; MADS Box Transcription Enhancer Factor 2, Polypeptide C; C5DELq14.3; DEL5q14.3; NEDHSIL

Background

Gene Name: MEF2C

NCBI Gene Entry: [4208](#)

UniProt Entry: [Q06413](#)

Application Information

Molecular Weight: Predicted, 51 kDa, observed, 60 kDa

Clonality: Mouse monoclonal antibody

Clone ID: 25GB5165

Species Reactivity: Human, mouse, rat

Applications Tested: Western blotting (WB)

Immunogen

Recombinant protein of human MEF2C

Isotype

Mouse IgG1

Storage Buffer

Supplied in PBS (pH 7.4) containing 50% glycerol, and 0.02% sodium azide.

Storage

Store at -20 °C for one year.

Recommended Dilutions

Western Blotting (WB): 1:400-1:2,000

Note: This product is for research use only.

Validation Data

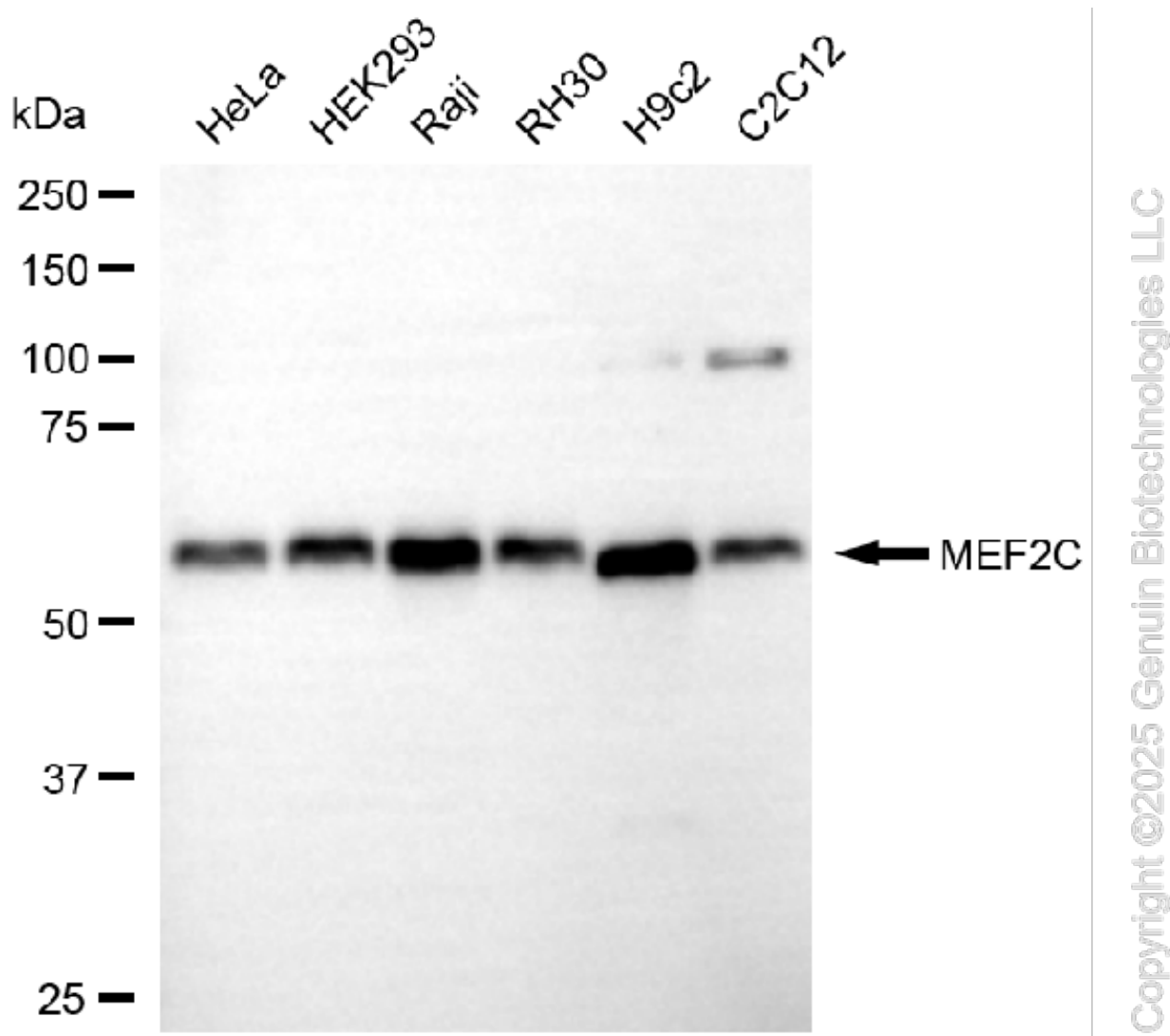
SUPPORT

SUPPORT@GENUINBIOTECH.COM
TEL: +1-540-855-7041

ORDERS

SALES@GENUINBIOTECH.COM
FAX: +1-540-855-7041

WWW.GENUINBIOTECH.COM



Western blotting analysis using anti-MEF2C antibody (Cat#5848). Total cell lysates (30 μ g) from various cell lines were loaded and separated by SDS-PAGE. The blot was incubated with anti-MEF2C antibody (Cat#5848, 1:2,000) and HRP-conjugated goat anti-mouse secondary antibody (Cat#101, 1:20,000) respectively. Image was developed using FeQ™ ECL Substrate Kit (Cat#226).

SUPPORT

SUPPORT@GENUINBIOTECH.COM
TEL: +1-540-855-7041

ORDERS

SALES@GENUINBIOTECH.COM
FAX: +1-540-855-7041

WWW.GENUINBIOTECH.COM