

## Catalog #: 5851

## Aliases

Forkhead Box O1; FKH1; FKHR; Forkhead Box Protein O1; FOXO1A; Forkhead; Drosophila; Homolog Of; In Rhabdomyosarcoma; Forkhead Box Protein O1A; Forkhead In Rhabdomyosarcoma; Forkhead Homolog In Rhabdomyosarcoma

## Background

Gene Name: FOXO1

NCBI Gene Entry: [2308](#)

UniProt Entry: [Q12778](#)

## Application Information

Molecular Weight: Predicted, 70 kDa; observed, 70 kDa

Clonality: Rabbit monoclonal antibody

Clone ID: 23GB1020

Species Reactivity: Human, mouse, rat

Applications Tested: Western blotting (WB), flow cytometry (FCM), immunocytochemistry (IC)

## Immunogen

A synthesized peptide derived from human FOXO1A

## Isotype

Rabbit IgG

## Storage Buffer

Supplied in PBS (pH 7.4) containing 50% glycerol, and 0.02% sodium azide.

## Storage

Store at -20 °C for one year.

## Recommended Dilutions

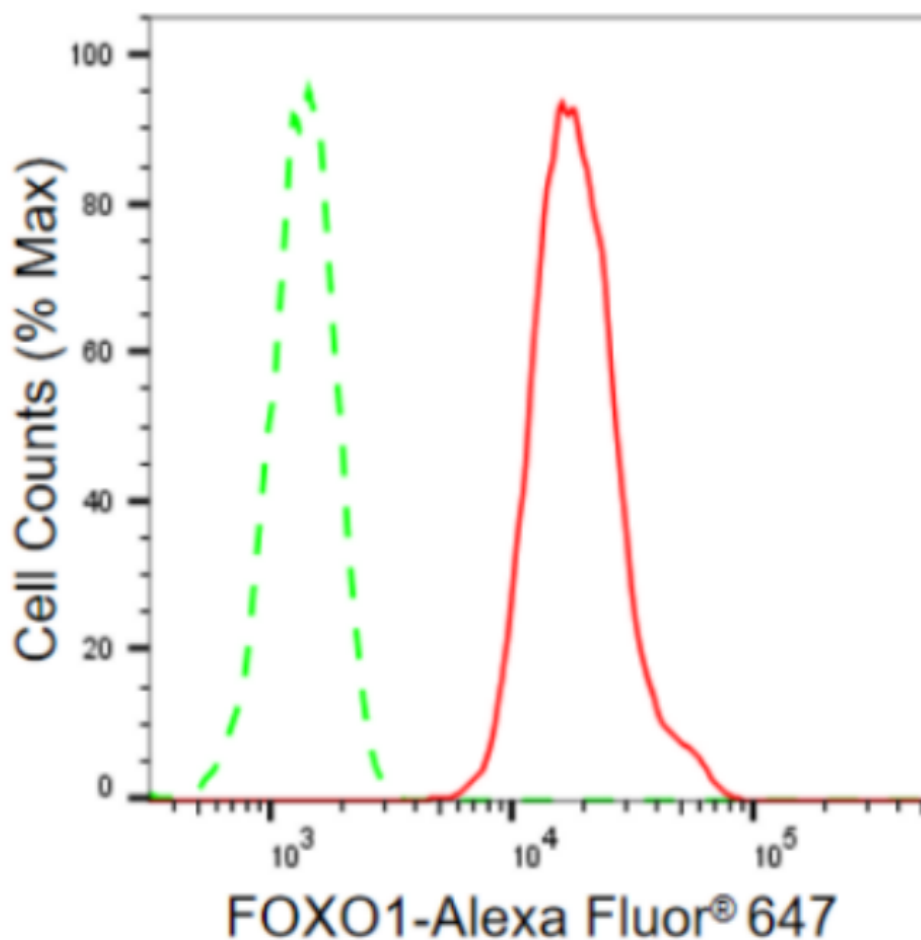
Western Blotting (WB): 1:1,000-1:5,000

Flow Cytometry (FCM): 1:2,000

Immunocytochemistry (IC): 1:100-1:1,000

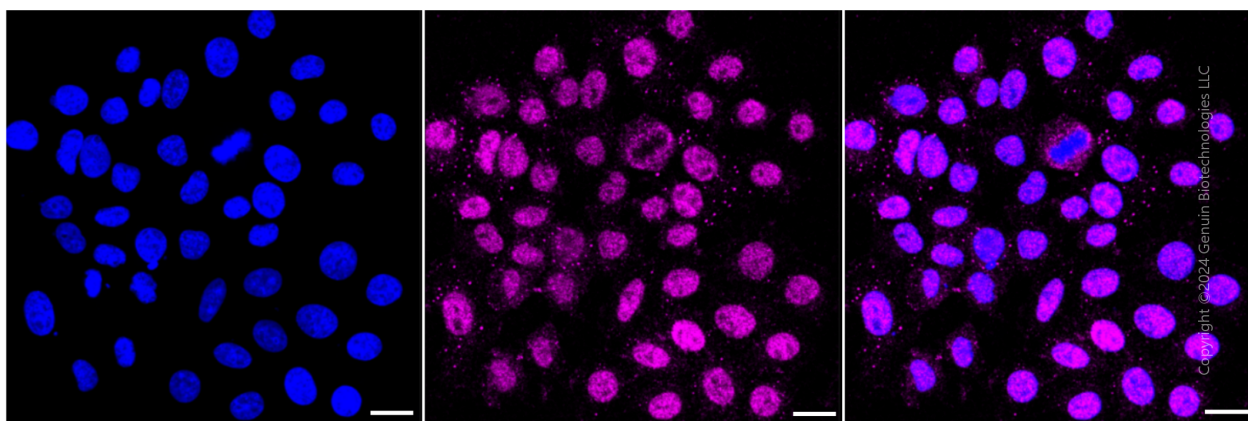
**Note:** This product is for research use only.

## Validation Data



Copyright ©2024 Genuin Biotechnologies LLC

Flow cytometric analysis of FOXO1 expression in HepG2 cells using FOXO1 antibody (Cat#5851, 1:2,000). Green, isotype control; red, FOXO1.



Copyright ©2024 Genuin Biotechnologies LLC

Immunocytochemical staining of HepG2 cells with forkhead box O1 antibody (Cat#5851, 1:1,000). Nuclei were stained blue with DAPI; Forkhead box O1 was stained magenta with Alexa

## SUPPORT

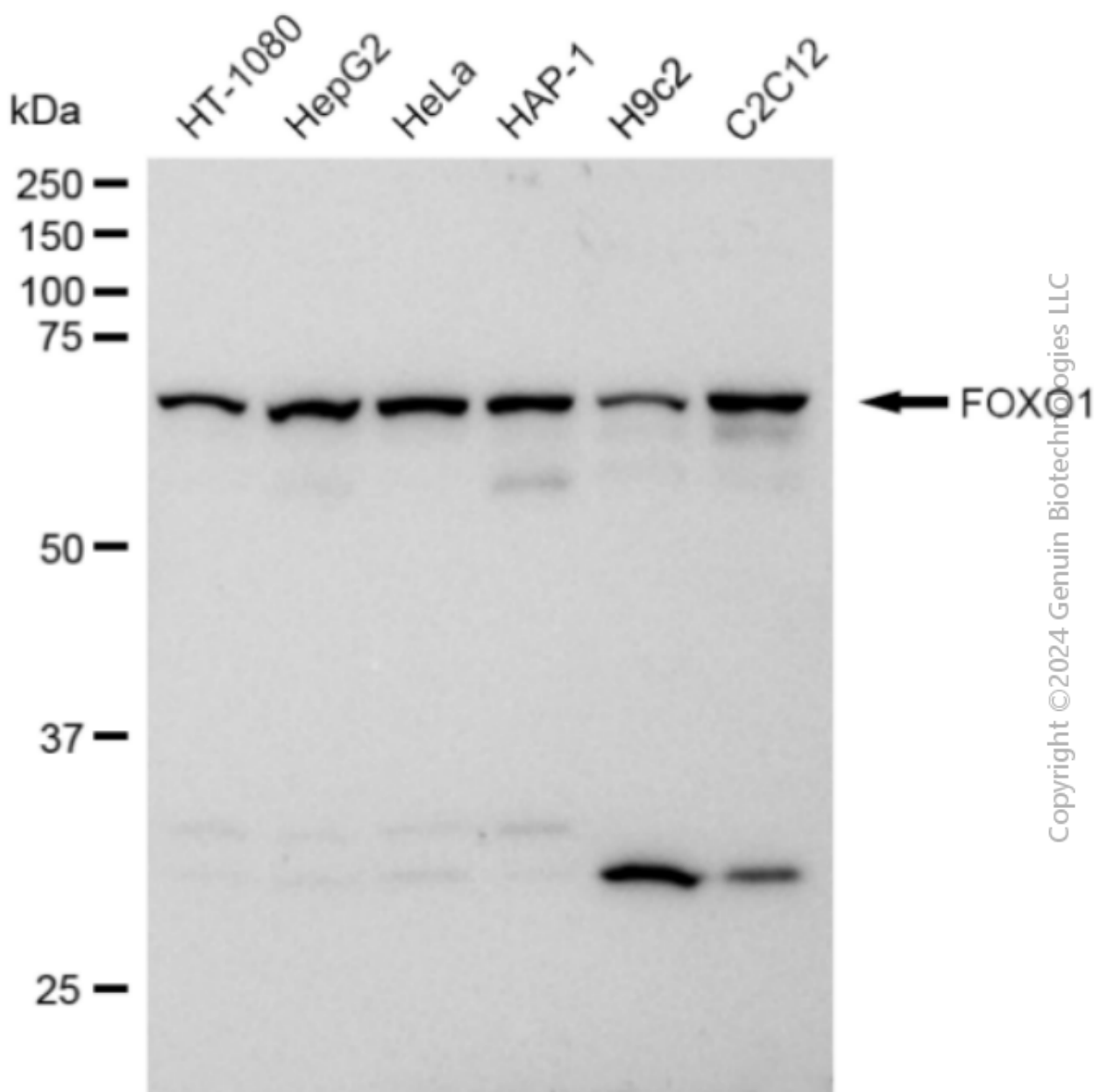
SUPPORT@GENUINBIOTECH.COM  
TEL: +1-540-855-7041

## ORDERS

SALES@GENUINBIOTECH.COM  
FAX: +1-540-855-7041

WWW.GENUINBIOTECH.COM

Fluor® 647. Images were taken using Leica stellaris 5. Protein abundance based on laser Intensity and smart gain: Medium. Scale bar: 20  $\mu$ m.



Western blotting analysis using anti-FOXO1 antibody (Cat#5851). Total cell lysates (30  $\mu$ g) from various cell lines were loaded and separated by SDS-PAGE. The blot was incubated with anti-FOXO1 antibody (Cat#5851, 1:5,000) and HRP-conjugated goat anti-rabbit secondary antibody (Cat#201, 1:50,000) respectively. Image was developed using FeQ™ ECL Substrate Kit (Cat#226).