

Catalog #: 5858

Aliases

RNPEP; Arginyl Aminopeptidase; APB; Aminopeptidase B; Arginine Aminopeptidase; EC 3.4.11.6; AP-B; Arginyl Aminopeptidase (Aminopeptidase B); EC 3.4.11

Background

Gene Name: RNPEP

NCBI Gene Entry: [6051](#)

UniProt Entry: [Q9H4A4](#)

Application Information

Molecular Weight: Predicted, 73 kDa, observed, 73 kDa

Clonality: Mouse monoclonal antibody

Clone ID: 25GB5210

Species Reactivity: Human, mouse, rat

Applications Tested: Western blotting (WB), flow cytometry (FCM)

Immunogen

Recombinant protein of human RNPEP

Isotype

Mouse IgG1

Storage Buffer

Supplied in PBS (pH 7.4) containing 50% glycerol, and 0.02% sodium azide.

Storage

Store at -20 °C for one year.

Recommended Dilutions

Western Blotting (WB): 1:500-1:2,500

Flow Cytometry (FCM): 1:2,000

Note: This product is for research use only.

Validation Data

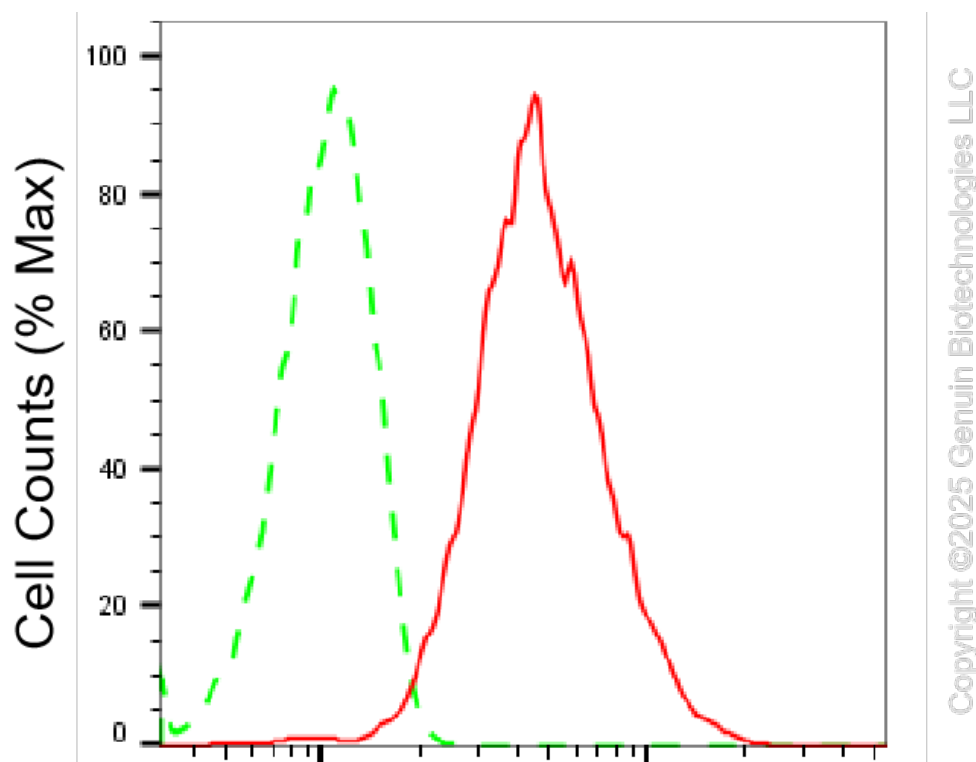
SUPPORT

SUPPORT@GENUINBIOTECH.COM
TEL: +1-540-855-7041

ORDERS

SALES@GENUINBIOTECH.COM
FAX: +1-540-855-7041

WWW.GENUINBIOTECH.COM



Arginyl aminopeptidase-Alexa Fluor® 647

Flow cytometric analysis of Arginyl aminopeptidase expression in HepG2 cells using anti-Arginyl aminopeptidase antibody (Cat#5858, 1:2,000). Green, isotype control; red, Arginyl aminopeptidase.

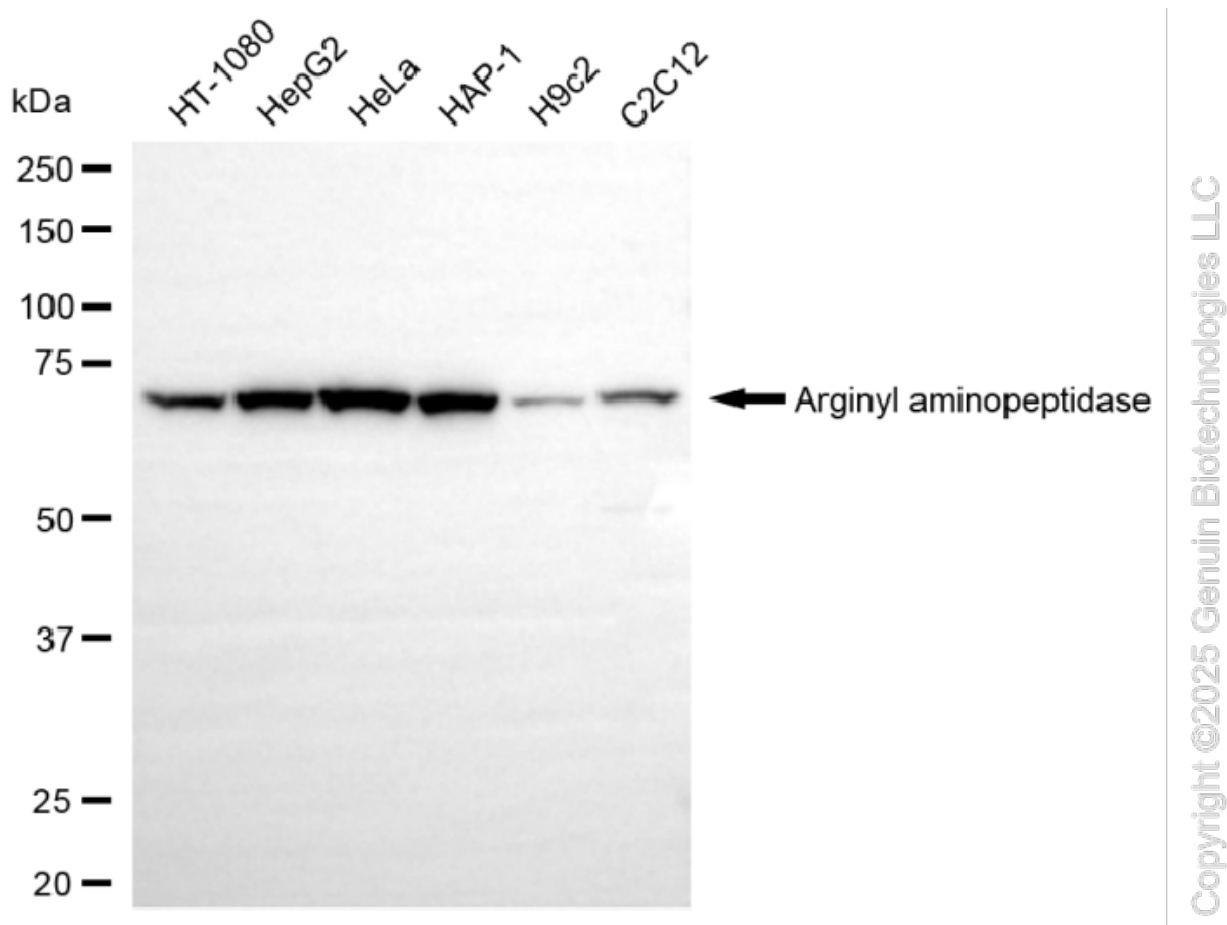
SUPPORT

SUPPORT@GENUINBIOTECH.COM
TEL: +1-540-855-7041

ORDERS

SALES@GENUINBIOTECH.COM
FAX: +1-540-855-7041

WWW.GENUINBIOTECH.COM



Western blotting analysis using anti-arginyl aminopeptidase antibody (Cat#5858). Total cell lysates (30 µg) from various cell lines were loaded and separated by SDS-PAGE. The blot was incubated with anti-arginyl aminopeptidase antibody (Cat#5858, 1:2,500) and HRP-conjugated goat anti-mouse secondary antibody (Cat#101, 1:20,000) respectively. Image was developed using NaQ™ ECL Substrate Kit (Cat#716).

SUPPORT

SUPPORT@GENUINBIOTECH.COM
TEL: +1-540-855-7041

ORDERS

SALES@GENUINBIOTECH.COM
FAX: +1-540-855-7041

WWW.GENUINBIOTECH.COM