

## Catalog #: 5861

### Aliases

RUVBL2; RuvB Like AAA ATPase 2; TIP49b; INO80J; TIP48; INO80 Complex Subunit J; ECP51; RVB2; TIH2; 48 KDa TATA Box-Binding Protein-Interacting Protein; 51 KDa Erythrocyte Cytosolic Protein; TIP60-Associated Protein 54-Beta; 48 KDa TBP-Interacting Protein; RuvB (E Coli Homolog)-Like 2; Repressing Pontin 52; RuvB-Like 2; TAP54-Beta; Reptin52; Reptin; ECP-51; Erythrocyte Cytosolic Protein, 51-KD; RuvB-Like 2 (E. Coli); Reptin52 Protein; EC 3.6.4.12; Reptin 52; EC 3.6.1; CGI-46; TIP49B

### Background

Gene Name: RUVBL2

NCBI Gene Entry: [10856](#)

UniProt Entry: [Q9Y230](#)

### Application Information

Molecular Weight: Predicted, 51 kDa, observed, 48 kDa

Clonality: Mouse monoclonal antibody

Clone ID: 25GB5225

Species Reactivity: Human, mouse

Applications Tested: Western blotting (WB)

### Immunogen

Recombinant protein of human RUVBL2

### Isotype

Mouse IgG1

### Storage Buffer

Supplied in PBS (pH 7.4) containing 50% glycerol, and 0.02% sodium azide.

### Storage

Store at -20 °C for one year.

### Recommended Dilutions

Western Blotting (WB): 1:500-1:2,500

---

#### SUPPORT

SUPPORT@GENUINBIOTECH.COM  
TEL: +1-540-855-7041

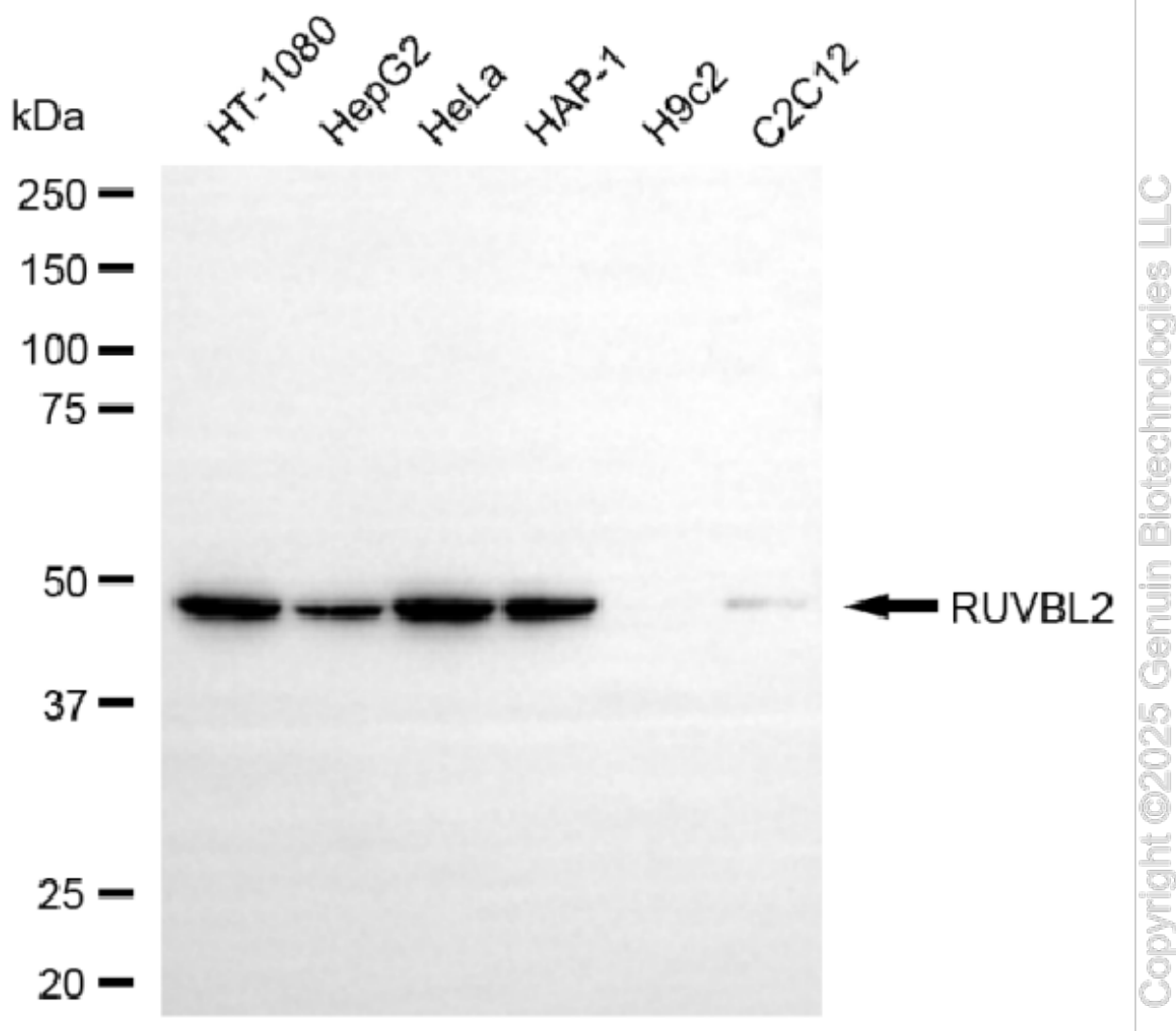
#### ORDERS

SALES@GENUINBIOTECH.COM  
FAX: +1-540-855-7041

[WWW.GENUINBIOTECH.COM](http://WWW.GENUINBIOTECH.COM)

**Note:** This product is for research use only.

## Validation Data



Western blotting analysis using anti-RUVBL2 antibody (Cat#5861). Total cell lysates (30 µg) from various cell lines were loaded and separated by SDS-PAGE. The blot was incubated with anti-RUVBL2 antibody (Cat#5861, 1:2,500) and HRP-conjugated goat anti-mouse secondary antibody (Cat#101, 1:20,000) respectively. Image was developed using NaQ™ ECL Substrate Kit (Cat#716).

### SUPPORT

SUPPORT@GENUINBIOTECH.COM  
TEL: +1-540-855-7041

### ORDERS

SALES@GENUINBIOTECH.COM  
FAX: +1-540-855-7041

WWW.GENUINBIOTECH.COM